

## 12mm IP65 Vandal Resistant Black Anodised Push Button Switch Blue Dome Momentary



### DESCRIPTION

A tamper-proof switch designed to be resistant to accidental damage and attack by vandals.

The switch has a black anodised body and a blue domed button.

### DISTINCTIVE FEATURES

- IP65 Rated
- Max. switching current 2A DC
- Switching voltage 36V DC
- Momentary, non-latching operation Off/(On)
- SPDT Contacts
- Mounting diameter 12mm

### APPLICATIONS

Perfect for harsh use in potentially hostile settings such as public areas, industrial environments and building management applications. Suitable for installation in kiosks, lifts, pedestrian crossings and ticket machines.

2A  
DC

36V  
DC

Ø  
12mm

Dome  
Button

SPST



## ELECTRICAL SPECIFICATION

Switching DC Current Rating	2A
Switching DC Voltage Rating	36V
Contact Resistance	$\leq 50\text{m}\Omega$
Insulation Resistance	$\geq 1000\text{M}\Omega$
Dielectric Strength	1500V AC



## GENERAL SPECIFICATION

Size	$\varnothing 12\text{mm}$
Type	Vandal resistant push button switch
Button Style	Dome
Operation	Momentary
Contacts	SPDT
Operating force (max)	5N
Mechanical Life	1,000,000 Cycles
Electrical Life (@ Rated Load)	200,000 Cycles
Panel Thickness	6mm
Panel Cutout	12mm
Torque	0.3Nm



## MATERIALS

Housing	Black anodised Zinc-Aluminium alloy
Button	PBT
Base	PBT
Contact	Silver Alloy



## ENVIRONMENTAL/OPERATING SPECIFICATION

Operating Temperature	-25°C to +55°C
Operating Humidity	45 to 85% RH(Non condensing )
IP Rating	IP65
Soldering	320°C (or 30W soldering iron) no more than 2s
Vibration Resistance	50Hz, amplitude about 1.2mm
Shock Resistance	>10g



## TERMINALS

Type	Screw Terminals
------	-----------------



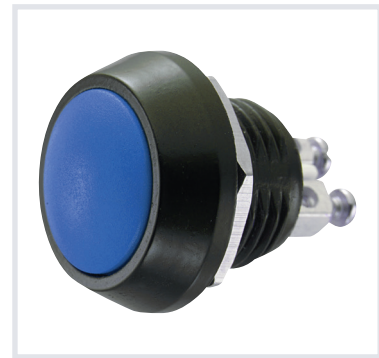
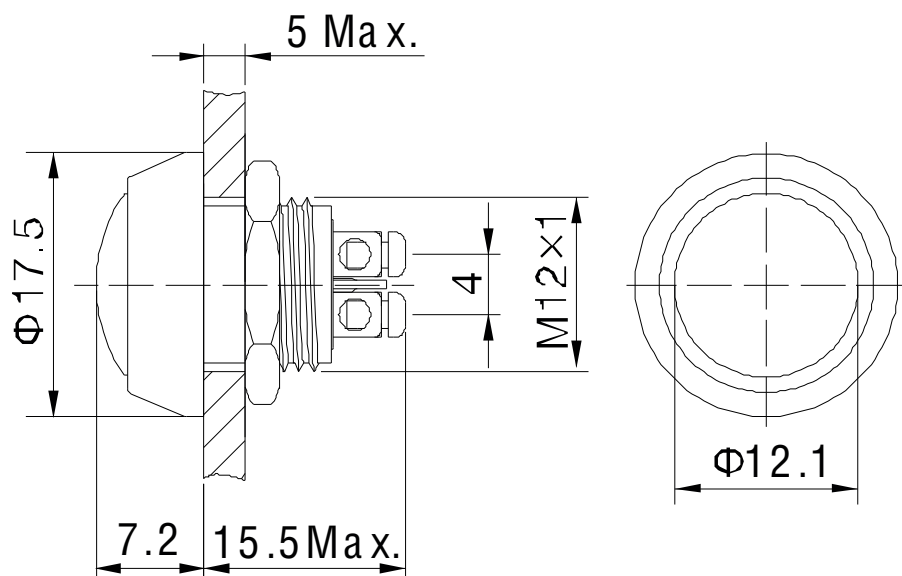
## OPTIONS

Body Material	Stainless steel, aluminium alloy (black), aluminium alloy (white), nickel-plated brass
Protection	e.g. IP65, IP67



## DIMENSIONS/DRAWINGS

Dimensions	mm
Panel Thickness	6mm



## PART NUMBER TABLE

Part Number	EAN	UNSPSC	Country of origin
52-4572	5053556005840	39122244	China

# R-TECH

Tried & trusted technology

**Important Notice:** This data sheet and its contents (the "Information") belong to Rapid Electronics Limited or are licensed to it. No licence is granted for the use of it other than for information purposes in connection with the products to which it relates. No licence of any intellectual property rights is granted. The Information is subject to change without notice and replaces all data sheets previously supplied. The Information supplied is believed to be accurate but Rapid Electronics Limited assumes no responsibility for its accuracy or completeness, any error in or omission from it or for any use made of it. Users of this data sheet should check for themselves the Information and the suitability of the products for their purpose and not make any assumptions based on information included or omitted. Liability for loss or damage resulting from any reliance on the Information or use of it (including liability resulting from negligence or where Rapid Electronics Limited were aware of the possibility of such loss or damage arising) is excluded. This will not operate to limit or restrict Rapid Electronics Limited's liability for death or personal injury resulting from its negligence.