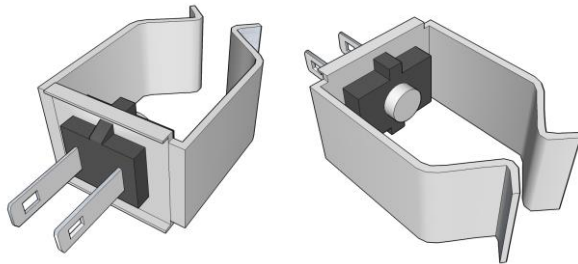




IP67 Rated CH Pipe-Clip Temperature Sensor

Design & Function

The new CH pipe-clip temperature sensor is based on the existing successful pipe-clip design. The sensor can respond to temperature change in less than 1 second when secured to the relevant diameter pipe in hot or cold water systems.



The new sensor is IP67 rated and gives electrical security and long-term reliability when using temperature sensors in situations where condensation problems can occur.

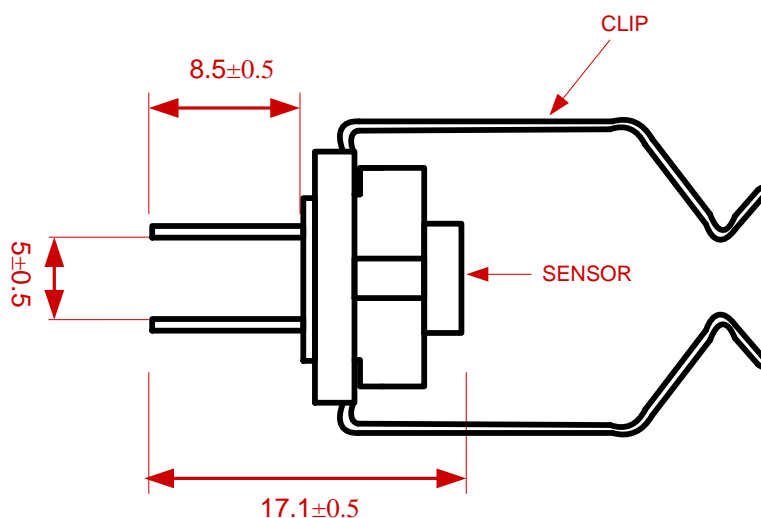
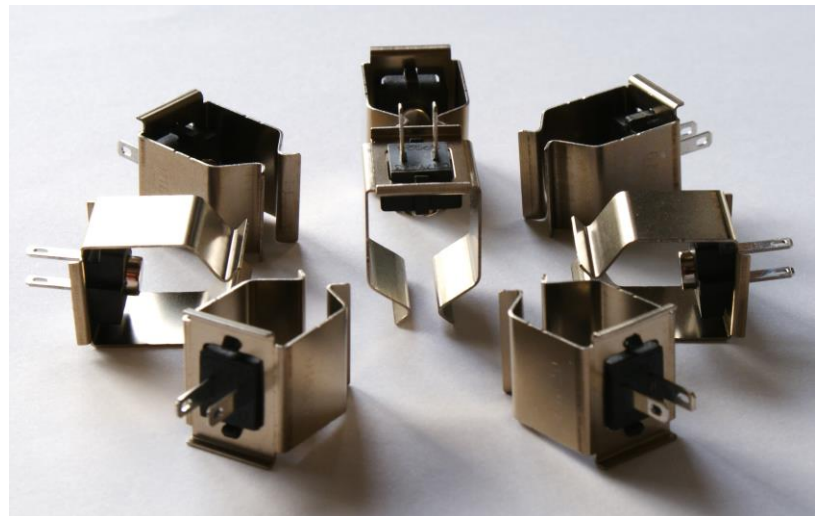
The CH sensor is also available with a second, independent NTC thermistor in the same size housing to obviate the need for separate safety controls

Sensor Features & Benefits

- IP67 rated
- Fast response times ($T_c < 1s$)
- Fits pipe diameters 12 – 22mm
- Simple to install
- Single or twin NTC option

NTC Specifications

- R25 Value: 10k ohms
- R25/85 Value: 3969K \pm 1%
- Accuracy: @85°C \pm 1K
- Operating Temp Range: -20/+120°C



Dimensions in mm