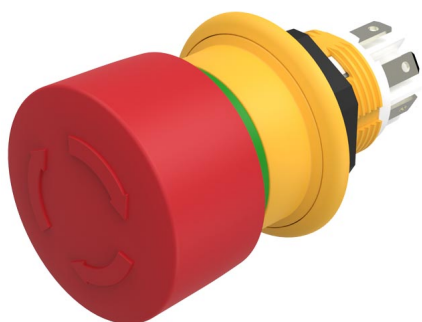


# EAO – Your Expert Partner for Human Machine Interfaces

61-6441.4097 - Emergency stop switch compact, foolproof EN IEC 60947-5-5

## 61-6441.4097 - Emergency stop switch compact, foolproof EN IEC 60947-5-5



*Attention: The preview is based on a sample product. This can differ from your current configuration.*

### Mounting

Mounting cut-out	Ø 16 mm
Design	raised

### Front

Front shape	round
Front dimension	Ø 27 mm

### Other Attributes

Marking	Arrows
Weight	0.018 kg

### Operating-/Indication part

Lens material	Plastic
Lens colour	red
Lens profile	Mushroom

### IP-Rating

Front protection	IP67, IP69K
------------------	-------------

### Connection Method

Terminal	Solder 2.8 x 0.5 mm
----------	---------------------

### Actuator

Switching action	Maintained
------------------	------------

### Switching element

Contacts	1 NC + 2 NO
----------	-------------

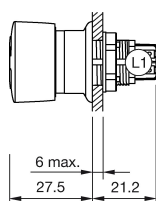
### Function

Emergency stop switch
-----------------------

# EAO – Your Expert Partner for Human Machine Interfaces

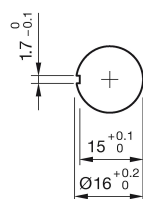
61-6441.4097 - Emergency stop switch compact, foolproof EN IEC 60947-5-5

## Dimensions

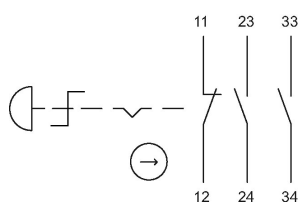


L1 = Solder/Plug-in terminal 2.8 x 0.5 mm

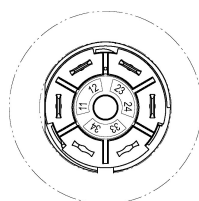
## Mounting cut-outs



## Wiring diagram



## Component layout



## Additional information

Twist to unlock clockwise

Position indication ring green

Application as per DIN EN ISO 13850 and EN 60204-1

## Legend

Switching action: C = Maintained