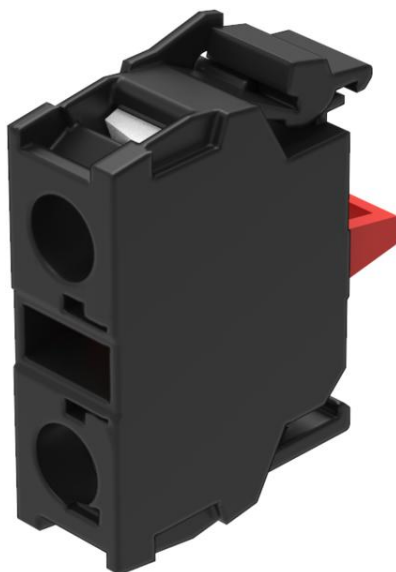


# EAO – Your Expert Partner for Human Machine Interfaces

## 45-312.1X10 - Switching element

### 45-312.1X10 - Switching element



*Attention: The preview is based on a sample product. This can differ from your current configuration.*

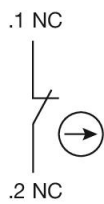
#### Attribute

Contacts	1 NC
Contact material	Gold
IP Protection	IP20 Terminal
Operating Voltage/Current	
Switching current	10 A
Switching system	Slow-make switching element
Switching voltage	500 V
Switching voltage kind of	AC
Terminal	Screw terminal
Weight	0.01 kg
Switching rating	500 V AC @ 10 A

# EAO – Your Expert Partner for Human Machine Interfaces

45-312.1X10 - Switching element

## Wiring diagrams



## Additional information

Contacts: NC = Normally closed, NO = Normally open  
Front mounting