

EAO – Your Expert Partner for Human Machine Interfaces

84-ASKS-C18-04A8 - IO-Link Touch Standard - IO-Link Touch Standard

84-ASKS-C18-04A8 - IO-Link Touch Standard - IO-Link Touch Standard



Attention: The preview is based on a sample product. This can differ from your current configuration.

Attribute

| | |
|-------------------------|------------------------------|
| Design | flush |
| IP front protection | IP69K |
| Design | flush |
| Front bezel material | Plastic |
| Front dimension | Ø 30 mm |
| Front form | round |
| Housing colour | Black |
| Housing material | Plastic |
| IK front protection | IK08 |
| Type of illumination | RGB LED |
| IP front protection | IP69K |
| Lens illumination | illuminative |
| Lens material | Plastic |
| Lens optics | transparent |
| Lens shape | flush |
| Operating voltage | 8,4 - 32 V DC |
| Switching system | Capacitive |
| Symbol | C18 |
| Terminal | Connector M12 |
| Weight | 0.015 kg |
| Communication interface | IO-Link specification |
| Output | PNP-NO |
| Output pulse | Dynamic |
| LED control | Automatic |
| LED colour 1 | Green |
| LED colour 2 | Red |
| Load current | max. 200 mA |
| Current consumption | at 24 V max. 40 mA |
| Type of actuation | Touch |
| Operating force | No actuating force necessary |

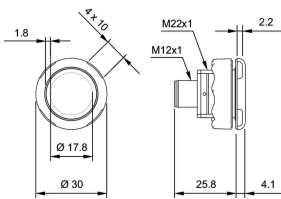
Function

Capacitive switch

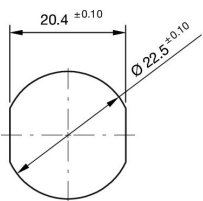
EAO – Your Expert Partner for Human Machine Interfaces

84-ASKS-C18-04A8 - IO-Link Touch Standard - IO-Link Touch Standard

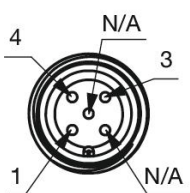
Dimensions



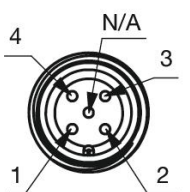
Mounting cut-outs



Component layouts



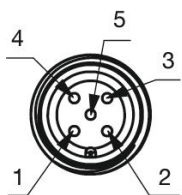
Component layouts



EAO – Your Expert Partner for Human Machine Interfaces

84-ASKS-C18-04A8 - IO-Link Touch Standard - IO-Link Touch Standard

Component layouts



Wiring diagrams

Wiring diagrams

Wiring diagrams