

CONTROL PRODUCTS

IP66 Control Station Enclosures

ABS enclosures pre-drilled with 22mm holes for the mounting of pushbutton switches.

- IP66 sealed
- 21mm diameter knockouts with PG13.5 thread for cable glands
- Black base with yellow lid
- Wall mountable via secure screws in base/cable tie clamp
- Captive plastic screws
- Indentation for legend plates
- Flame retardant to UL94-V0

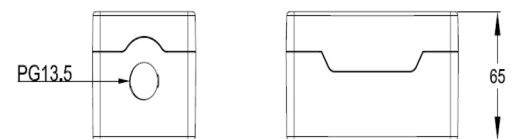
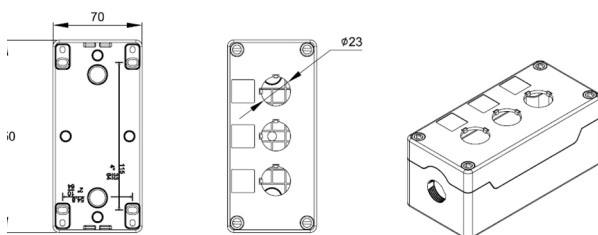
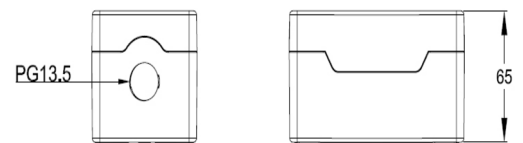
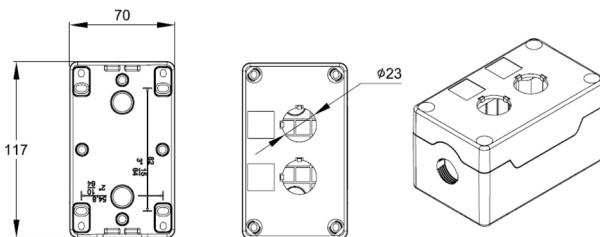
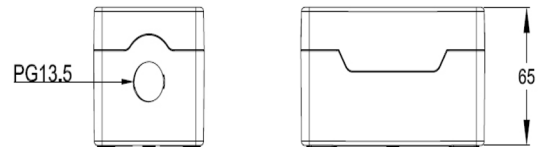
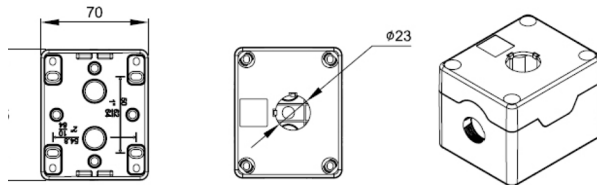
SPECIFICATIONS

Materials	ABS UL94-V0
Protection Class	IP66
Rated Temperature	from -25°C to +70°C
Standard Colours	Lid- Yellow (RAL 1023) Black (RAL 9017)



Empty Enclosures

TYPE NO	HOLES	LID COLOUR	LENGTH	WIDTH	HEIGHT
SC1A	1	Yellow	85	70	65
SC2A	2	Yellow	117	70	65
SC3A	3	Yellow	150	70	65



CAMDENBOSS

We operate a constant improvement policy, our products are subject to change without notice.

Ver 1.1

+44 (0)1638 716101
info@camdenboss.com
www.camdenboss.com



FM 28614 EMS 613558

PCB
TERMINAL
BLOCKS

INTER-
CONNECTION

FUSES &
FUSE-
HOLDERS

LEDs &
INDICATORS

MINIATURE
SWITCHES

LIMIT &
SAFETY
SWITCHES

CONTROL
PRODUCTS

INTERFACE
MODULES &
SUPPORTS

RELAY
BASES

DIN RAIL
ENCLOSURES

BATTERIES

SOLAR
PANELS

TRANS-
FORMERS