



**EAN/GTIN:** 4013288094759  
**Part no.:** 05024401001  
**Article no.:** 977 TORX®

**Dimension:** 188x33x33 mm  
**Weight:** 89 g  
**Country of origin:** CZ  
**Customs tariff number:** 82054000



- Chiseldriver for fastening, chiselling and loosening
- Hexagonal blade extending through the handle
- Handle markings simplify finding and sorting of tools
- Impact cap and bolster for the transfer of higher torque
- The Wera Black Point tip offers an exact fit and optimum corrosion protection

Wera Chiseldriver for fastening, chiselling and loosening seized screws. Multi-component Kraftform handle for fast and low-fatigue working. A hexagon blade out of high quality bit material that extends right through the handle ensures full transfer of force, even when struck with a hammer. Ductile tempered material to prevent the blade from splintering or breaking. Comes with an impact cap for durability and reduced risk of splintering. More torque can be transferred with the help of an open-end or ring spanner applied to the integrated hexagonal bolster. The Wera Black Point tip and a complex hardening process ensure a long service life of the tip, enhanced corrosion protection and an exact fit. The hexagonal anti-roll feature prevents any bothersome rolling away at the workplace and handle markings make for simplified finding and sorting of the tool.

**Weblink**

[http://products.wera.de/en/tools\\_for\\_the\\_aerospace\\_segment\\_screwdrivers\\_kraftform\\_plus\\_series\\_900\\_977\\_torx.html](http://products.wera.de/en/tools_for_the_aerospace_segment_screwdrivers_kraftform_plus_series_900_977_torx.html)

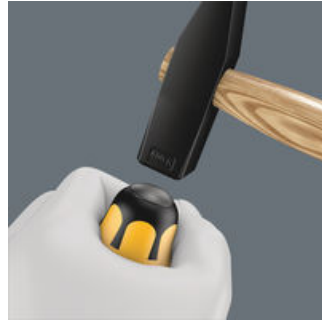
Wera - 977 TORX®  
 05024401001 - 4013288094759

Wera Werkzeuge GmbH  
 Korzter Straße 21-25  
 D-42349 Wuppertal  
 Tel: +49 (0)2 02 / 40 45-0  
 E-Mail: info@wera.de

**Integrated impact cap**



Screwdrivers are often misused as chisels. This can be dangerous. The chiseldriver is the solution when not only screwdriving is required. For fastening, chiselling and loosening seized screws. Wera chiseldriver: the screwdriver whenever the going gets tough!



An integrated impact cap lengthens the service life and reduces the danger of splintering. Nevertheless, always wear protective goggles.

**Pound-thru blade**



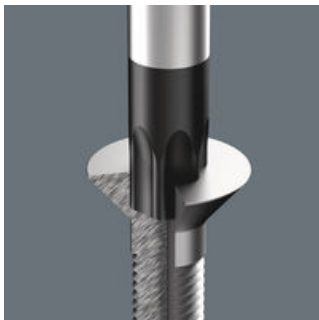
A hexagon blade made out of high-quality bit material extends right through the handle – thereby ensuring full transfer of force, even when struck with a hammer. The ductile tempered material prevents the blade from splintering or breaking.

**Integrated hex bolster**



Greater torque can be transferred by fitting an open-jaw or ring spanner over the integrated hex bolster.

**Wera Black Point tip**



The Wera Black Point tip and a refined hardening process ensure long service life of the tip, improved corrosion protection and an exact fit.

**Kraftform**



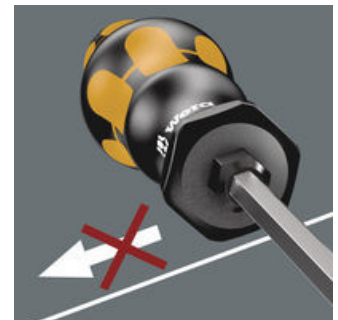
The basic idea for the prototype of the Kraftform handle – that the hand should dictate the design – has, right through to today, proved to be correct. In cooperation with the internationally recognised Fraunhofer IAO Institute, Wera developed a screwdriver handle designed to match the shape of the human hand as long ago as the 1960s. After a long development phase, the Wera Kraftform handle was launched to the market in 1968. It has been optimised through the years with new technologies, but has kept its proven shape. After all, the human hand has not changed either.

**Prevents hand injuries**



The outstanding design of the Kraftform handle that fits perfectly into the hand prevents hand injuries such as blisters and calluses.

**Non-roll feature**



The hexagonal non-roll feature prevents any rolling away at the workplace.

**Weblink**

[http://products.wera.de/en/tools\\_for\\_the\\_aerospace\\_segment\\_screwdrivers\\_kraftform\\_plus\\_series\\_900\\_977\\_torx.html](http://products.wera.de/en/tools_for_the_aerospace_segment_screwdrivers_kraftform_plus_series_900_977_torx.html)

Wera - 977 TORX®  
05024401001 - 4013288094759

Wera Werkzeuge GmbH  
Korzter Straße 21-25  
D-42349 Wuppertal  
Tel: +49 (0)2 02 / 40 45-0  
E-Mail: info@wera.de

More variants of this product family:



mm

mm

mm

mm

inch

05024400001	TX 15	5	8	80	98	3 1/8
<b>05024401001</b>	<b>TX 20</b>	<b>5</b>	<b>8</b>	<b>90</b>	<b>98</b>	<b>3 1/2</b>
05024402001	TX 25	6	10	100	105	4
05024403001	TX 27	6	10	125	105	5
05024404001	TX 30	8	13	150	112	6
05024405001	TX 40	8	13	150	112	6

Weblink

[http://products.wera.de/en/tools\\_for\\_the\\_aerospace\\_segment\\_screwdrivers\\_kraftform\\_plus\\_series\\_900\\_977\\_torx.html](http://products.wera.de/en/tools_for_the_aerospace_segment_screwdrivers_kraftform_plus_series_900_977_torx.html)

Wera - 977 TORX®

05024401001 - 4013288094759

Wera Werkzeuge GmbH

Korzter Straße 21-25

D-42349 Wuppertal

Tel: +49 (0)2 02 / 40 45-0

E-Mail: [info@wera.de](mailto:info@wera.de)