



EAN/GTIN: 4013288165695
Part no.: 05073675001
Article no.: Kraftform Micro 12
Universal 1

Dimension: 245x115x55 mm
Weight: 356 g
Country of origin: CZ
Customs tariff number: 82054000

- Anti-roll feature and swivel cap for rapid twisting
- Kraftform Micro handle for fast and ergonomic working
- E.g. for electricians, opticians, precision mechanics, jewellers or IT hardware fitters
- The refined screwdriver for electronics technicians
- Kraftform Micro set in a robust pouch

Wera Micro screwdriver set for precision mechanical work. Rapid twisting results from fixing the hand on the head and using the fast-turning zone just below. This makes time-consuming grip adjustments unnecessary. Storage and transport in a robust belt pouch – so the tool is always at hand.



Weblink

http://products.wera.de/en/innovations_and_autumn_winter_campaign_2017_2018_kraftform_micro_12_universal_1.html

Wera - Kraftform Micro 12 Universal 1
05073675001 - 4013288165695

Wera Werkzeuge GmbH
Korzter Straße 21-25
D-42349 Wuppertal
Tel: +49 (0)2 02 / 40 45-0
E-Mail: info@wera.de

Content:



2050 PH Micro
 05118020001¹⁾ 1 x PH 00x60
 05118022001²⁾ 1 x PH 0x60

1) Optimised for Asian PH screws
 2) Size 0 modified according to JClS 0 (Japanese Camera Industrial Standard)



2067 TORX® HF
 05118181001 1 x TX 5x40
 05118182001 1 x TX 6x40



2035 Micro
 05118002001 1 x 0.23x1.5x40
 05118004001 1 x 0.30x1.8x60
 05118006001 1 x 0.40x2.0x60
 05118008001 1 x 0.40x2.5x80
 05118010001 1 x 0.50x3.0x80

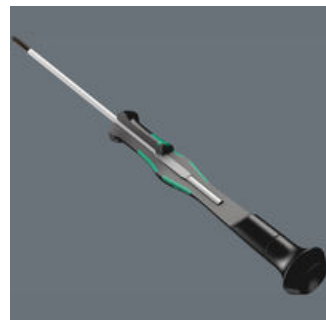


2054 Micro
 05118062001 1 x 0.9x40
 05118066001 1 x 1.5x60
 05118068001 1 x 2x60

Kraftform Micro Handle



Screwdriving jobs in electrical and precision engineering applications are often tedious and time-consuming. We learned from users what is important for them: working speeds, torque, precision – and we then focused particularly on these issues.



Multi-component screwdriver handle for ergonomic working.

The refined screwdriver for electronics technicians



The Kraftform Micro, with its three zones and their specific arrangement, satisfies these requirements perfectly. The free-turning cap that provides support for the hand works with these advantages, enabling quick and easy precision work.

The precision zone



The precision zone directly above the blade gives the user a better feel for the right rotation angle during fine adjustment work.

Weblink

http://products.wera.de/en/innovations_and_autumn_winter_campaign_2017_2018_kraftform_micro_12_universal_1.html

Wera - Kraftform Micro 12 Universal 1
 05073675001 - 4013288165695

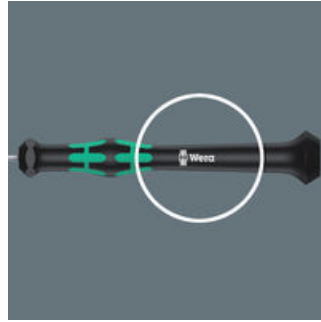
Wera Werkzeuge GmbH
 Korzter Straße 21-25
 D-42349 Wuppertal
 Tel: +49 (0)2 02 / 40 45-0
 E-Mail: info@wera.de

The power zone



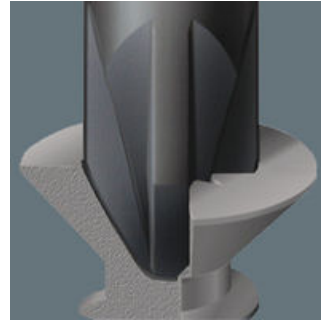
The power zone has integrated soft zones near the blade tip to ensure high torque transfer for loosening or tightening screws without losing contact with the screw.

The fast-turning zone



The fast-turning zone just below the rotating cap allows rapid twisting.

Wera Black Point tip



The Wera Black Point tip and a refined hardening process ensure long service life of the tip, improved corrosion protection and an exact fit.

Applications



Indispensable for many users, including electronics technicians, opticians, precision engineers, jewellers, EDP hardware fitters and model-makers.

Weblink

http://products.wera.de/en/innovations_and_autumn_winter_campaign_2017_2018_kraftform_micro_12_universal_1.html

Wera - Kraftform Micro 12 Universal 1
05073675001 - 4013288165695

Wera Werkzeuge GmbH
Korzter Straße 21-25
D-42349 Wuppertal
Tel: +49 (0)2 02 / 40 45-0
E-Mail: info@wera.de