

## Kraftform Kompakt 12, 10 pieces

### Kraftform Kompakt 10, 12



<b>EAN/GTIN:</b>	4013288155887	<b>Dimension:</b>	126x75x27 mm
<b>Part no.:</b>	05135942001	<b>Weight:</b>	132 g
<b>Article no.:</b>	KK 12	<b>Country of origin:</b>	CZ
		<b>Customs tariff number:</b>	82079030

- A screwdriver set cannot be more compact
- Kraftform holder with Rapidaptor quick-release chuck
- Torsion design of the bits against premature wear
- Tough viscous bits for universal use
- Convenient and robust storage

9 Wera bits. 1 holder 813 R Kraftform with Rapidaptor quick-release chuck, multi-component for high working speeds and particularly ergonomic screwdriving.

#### Weblink

[http://products.wera.de/en/kraftform\\_kompakt\\_kraftform\\_kompakt\\_10\\_12\\_kk\\_12.html](http://products.wera.de/en/kraftform_kompakt_kraftform_kompakt_10_12_kk_12.html)

Wera - KK 12  
05135942001 - 4013288155887

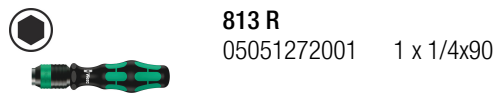
Wera Werkzeuge GmbH  
Korzter Straße 21-25  
D-42349 Wuppertal  
Tel: +49 (0)2 02 / 40 45-0  
E-Mail: [info@wera.de](mailto:info@wera.de)

# Kraftform Kompakt 12, 10 pieces

## Kraftform Kompakt 10, 12



### Content:



**813 R**  
05051272001 1 x 1/4x90



**851/1 J**  
05135040001 1 x PH 00x25x2.0  
05135041001<sup>1)</sup> 1 x PH 0x25x2.5  
05135042001 1 x PH 1x25x3.0

1) Size 0 modified according to JCIS 0 (Japanese Camera Industrial Standard)



**851/1 TZ PH**  
05056510001 1 x PH 2x25



**867/1 TZ TORX®**  
05066301001 1 x TX 6x25  
05066300001 1 x TX 5x25  
05066302001 1 x TX 7x25  
05066303001 1 x TX 8x25  
05066304001 1 x TX 9x25

### Handle/interchangeable blade system



Why is the right tool so often not at hand? The reason: too many tools and overly-heavy tool bags can make it bothersome to carry them onsite. So for us it was a clear challenge: to design a tool that is suitable for a whole host of applications and can be easily taken along to jobs at other sites. Our solution: Kraftform Kompakt tools. A handle into which blades with a range of different profiles can be inserted. Compactly and protectively housed in a light and robust textile pouch or plastic box.



The handle/interchangeable blade system allows rapid exchange of the blades required for a wide range of applications.

### Manual and power tool operations



The sets come with a Kraftform handle, quick-release chuck and bits for manual and power tool operations.

### Storage and transport



In a robust storage box

### Weblink

[http://products.wera.de/en/kraftform\\_kompakt\\_kraftform\\_kompakt\\_10\\_12\\_kk\\_12.html](http://products.wera.de/en/kraftform_kompakt_kraftform_kompakt_10_12_kk_12.html)

Wera - KK 12  
05135942001 - 4013288155887

Wera Werkzeuge GmbH  
Korzter Straße 21-25  
D-42349 Wuppertal  
Tel: +49 (0)2 02 / 40 45-0  
E-Mail: [info@wera.de](mailto:info@wera.de)

#### Kraftform

#### Prevents hand injuries



The basic idea for the prototype of the Kraftform handle – that the hand should dictate the design – has, right through to today, proved to be correct. In cooperation with the internationally recognised Fraunhofer IAO Institute, Wera developed a screwdriver handle designed to match the shape of the human hand as long ago as the 1960s. After a long development phase, the Wera Kraftform handle was launched to the market in 1968. It has been optimised through the years with new technologies, but has kept its proven shape. After all, the human hand has not changed either.

The outstanding design of the Kraftform handle that fits perfectly into the hand prevents hand injuries such as blisters and calluses.

#### Weblink

[http://products.wera.de/en/kraftform\\_kompakt\\_kraftform\\_kompakt\\_10\\_12\\_kk\\_12.html](http://products.wera.de/en/kraftform_kompakt_kraftform_kompakt_10_12_kk_12.html)

Wera - KK 12

05135942001 - 4013288155887

Wera Werkzeuge GmbH  
Korzter Straße 21-25  
D-42349 Wuppertal  
Tel: +49 (0)2 02 / 40 45-0  
E-Mail: [info@wera.de](mailto:info@wera.de)