

334 Screwdriver for slotted screws, 1.0 x6.0 x 150 mm

Kraftform Plus – Series 300



EAN/GTIN: 4013288102553
Part no.: 05340330001
Article no.: 334

Dimension: 255x37x37 mm
Weight: 96 g
Country of origin: CZ
Customs tariff number: 82054000



- Slotted screwdriver - workshop blade
- Multi-component Kraftform handle for fast and ergonomic screwdriving
- "Take it easy" Tool Finder: colour coding according to profile and size
- Hexagonal anti-roll feature against rolling away
- Lasertip tips for more secure fit in the screw head

High quality Kraftform Plus screwdrivers. Multi-component Kraftform Plus handle for pleasant, ergonomic working that makes blisters and calluses a thing of the past. Hard gripping zones for high working speeds whereas soft zones ensure high torque transfer. The tips of the Wera Lasertip screwdrivers are microscopically roughened by laser beams. This rough surface literally bites into the head of the screw. Any unintentional slipping out is therefore prevented. "Take it easy" tool finder with colour coding according to profiles and size stamp – for simple and rapid accessing of the required tool. The hexagonal anti-roll feature prevents any bothersome rolling away at the workplace.

Weblink

http://products.wera.de/en/screwdrivers_kraftform_plus_series_300_334.html

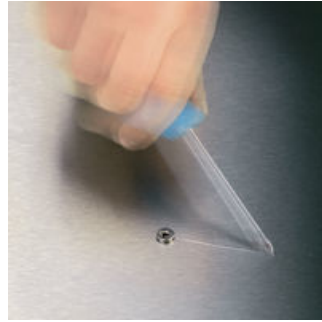
Wera - 334
05340330001 - 4013288102553

Wera Werkzeuge GmbH
Korzter Straße 21-25
D-42349 Wuppertal
Tel: +49 (0)2 02 / 40 45-0
E-Mail: info@wera.de

Lasertip prevents slipping out



Kraftform Plus screwdrivers – ergonomics you can grasp. They relieve the entire hand-arm system even when used intensively. Along with other technical and product advantages such as the Lasertip for a secure fit in the screw head, Kraftform screwdrivers are the ideal choice whenever manual screwdriving jobs are concerned.



It happens time and time again that the tip slips out of the screw head when screwdriving, sometimes damaging valuable surfaces or even causing injury. The tips of the Wera Lasertip screwdrivers are microscopically roughened by means of a laser. This rough surface literally “bites” itself firmly into the screw head. Slipping out becomes a thing of the past.

Lasertip



A precisely-focused laser creates a sharp-edged surface structure. This laser treatment results in an edge hardness of up to 1000 HV 0.3. Wera Lasertip “bites” itself into the screw head and prevents any slips out of the recess. It is available for screwdrivers for slotted, Phillips and Pozidriv screws.

Reduced contact pressure



Wera Lasertip reduces the contact pressure required and enhances force transfer – meaning less screwdriving effort is required. Screwdriving becomes safer and easier.

Weblink

http://products.wera.de/en/screwdrivers_kraftform_plus_series_300_334.html

Wera - 334

05340330001 - 4013288102553

Wera Werkzeuge GmbH

Korzter Straße 21-25

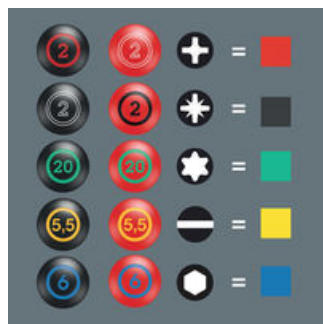
D-42349 Wuppertal

Tel: +49 (0)2 02 / 40 45-0

E-Mail: info@wera.de

Kraftform Plus – Series 300

“Take it easy” Toolfinder



Screwdrivers with “Take it easy” tool finder: colour coding according to profile and size stamp.

Kraftform



The basic idea for the prototype of the Kraftform handle – that the hand should dictate the design – has, right through to today, proved to be correct. In cooperation with the internationally recognised Fraunhofer IAO Institute, Wera developed a screwdriver handle designed to match the shape of the human hand as long ago as the 1960s. After a long development phase, the Wera Kraftform handle was launched to the market in 1968. It has been optimised through the years with new technologies, but has kept its proven shape. After all, the human hand has not changed either.

Prevents hand injuries










The outstanding design of the Kraftform handle that fits perfectly into the hand prevents hand injuries such as blisters and calluses.

Rapid hand repositioning



The hard materials used for the handle ensure rapid hand repositioning without any danger of the skin “sticking” to the handle. The surrounding hard zones with large diameters glide like wheels across the hand.

More variants of this product family:

							
	mm	mm	mm	mm	mm	inch	inch
05007610001	0.8	5.0	100	98	5.0	3/16	4
05007620001	1.0	6.0	125	105	6.0	1/4	5
05340330001	1.0	6.0	150	105	6.0	1/4	6
05110010001	1.2	6.5	150	105	6.0	1/4	6
05007635001	1.2	7.0	150	105	7.0	9/32	6
05007621001	1.2	6.5	200	105	7.0	9/32	8
05110011001	1.2	8.0	175	112	7.0	5/16	7
05007640001	1.6	8.0	175	112	7.0	5/16	7
05110104001	1.6	10.0	200	112	9.0	3/8	8
05110105001 ¹⁾	2.0	12.0	250	117	10.0	1/2	10

1) without Lasertip

Weblink

http://products.wera.de/en/screwdrivers_kraftform_plus_series_300_334.html

Wera - 334

05340330001 - 4013288102553

Wera Werkzeuge GmbH

Korzter Straße 21-25

D-42349 Wuppertal

Tel: +49 (0)2 02 / 40 45-0

E-Mail: info@wera.de

334 Screwdriver for slotted screws, 1.0 x6.0 x 150 mm

Kraftform Plus – Series 300



Weblink

http://products.wera.de/en/screwdrivers_kraftform_plus__series_300_334.html

Wera - 334

05340330001 - 4013288102553