

Features:

- High luminous LEDs
- 5mm Round standard directivity
- UV Resistant epoxy
- White clear type

Applications

- Electronic signs and signals
- Small area illuminations
- Back lighting
- Other lighting

Absolute maximum rating (Ta=25°C)

| Item | Symbol | Value | Unit |
|----------------------------|-----------|-------------|------|
| DC Forward current | I_F | 30 | mA |
| Pulse forward current* | I_{FP} | 100 | mA |
| Reverse voltage | V_R | 5 | V |
| Power dissipation | P_D | 78 | mW |
| Operating temperature | T_{opr} | -30 to +85 | °C |
| Storage temperature | T_{stg} | -40 to +100 | °C |
| Lead soldering temperature | T_{sol} | 260°C/5sec | - |

*Pulse width max. 10ms. Duty ratio max. 1/10.

Electrical - Optical characteristics (Ta=25°C)

| Item | Symbol | Condition | Min. | Typ. | Max. | Unit |
|-----------------------|-----------------|---------------------|------|------|------|---------------|
| DC Forward voltage *1 | V_F | $I_F = 20\text{mA}$ | 1.8 | 2.0 | 2.4 | V |
| DC Reverse current | I_R | $V_R = 5\text{V}$ | - | - | 10 | μA |
| Domi. wavelength *2 | λ_D | $I_F = 20\text{mA}$ | 600 | 605 | 610 | nm |
| Luminous intensity *3 | I_v | $I_F = 20\text{mA}$ | 3000 | 4200 | 5800 | mcd |
| 50% Power angle | $2\theta_{1/2}$ | $I_F = 20\text{mA}$ | - | 15 | - | deg |

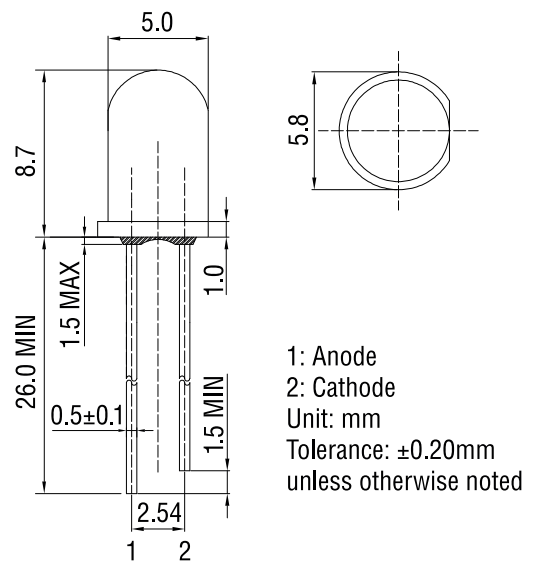
*1 Tolerance of measurements of forward voltage is $\pm 0.1\text{V}$

*2 Tolerance of measurements of dominant wavelength is $+1\text{nm}$

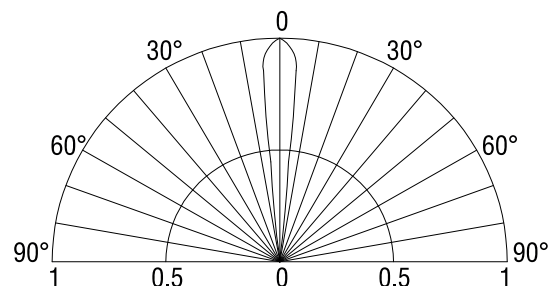
*3 Tolerance of measurements of luminous intensity is $+15\%$



Outline dimensions:



Directivity:



AlGaInP LED

TYPICAL ELECTRICAL/OPTICAL CHARACTERISTIC CURVES

