

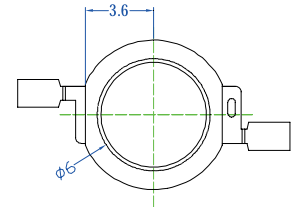
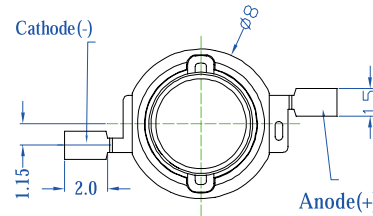
## Features:

- Highest luminous flux
- Super energy efficiency
- Long lifetime operation
- Superior ESD protection
- Superior UV resistance

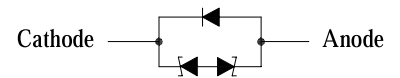
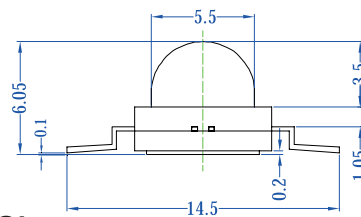
## Applications

- Read lights (car, bus, aircraft)
- Portable (torch, bicycle)
- Bollards/security/garden
- Traffic signalling/beacons
- Indoor/outdoor commercial lights

## Outline dimensions:



BackView



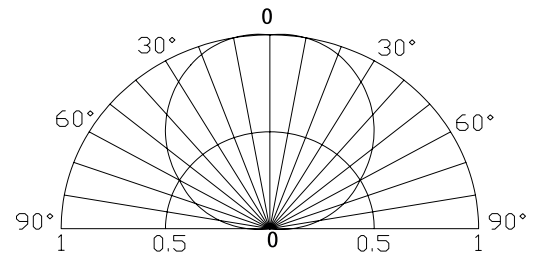
ESD Protection Diode  
Unit:mm  
Tolerance:  $\pm 0.30$ mm

## Absolute maximum rating (Ta=25°C)

Item	Symbol	Value	Unit
DC forward current	$I_F$	800	mA
Pulse forward current*	$I_{FP}$	1000	mA
Reverse voltage	$V_R$	5	V
Power dissipation	$P_D$	3200	mW
Operating temperature	$T_{opr}$	-30 to +85	°C
Storage temperature	$T_{stg}$	-40 to +100	°C
Lead soldering temperature	$T_{sol}$	260°C/5sec	-

\*Pulse width max. 10ms. Duty ratio max. 1/10

## Directivity:



## Electrical - Optical characteristics (Ta=25°C)

Item	Symbol	Condition	Min.	Typ.	Max.	Unit
DC forward voltage	$V_F$	$I_F = 700\text{mA}$	3.0	3.3	4.0	V
DC reverse current	$I_R$	$V_R = 5\text{V}$	-	-	10	$\mu\text{A}$
Luminous flux†	$\Phi_V$	$I_F = 700\text{mA}$	180	200	-	lm
Colour temperature	CCT	$I_F = 700\text{mA}$	-	6500	-	K
Chromaticity coordinates*	x	$I_F = 700\text{mA}$	-	0.31	-	-
	y	$I_F = 700\text{mA}$	-	0.33	-	-
50% Power angle	$2\theta_{1/2}$	$I_F = 700\text{mA}$	-	120	-	deg

Note: Don't drive at rated current more than 5s without heat sink for Xeon 3 emitter series.

## Forward operating current (DC):

