

## LED Clusters

Order code	Manufacturer code	Description
56-2985	BL0307-50-44	52MM ULTRABRIGHT LED CLUSTER (RC)

LED Clusters	Page 1 of 4
The enclosed information is believed to be correct, Information may change 'without notice' due to product improvement. Users should ensure that the product is suitable for their use. E. & O. E.	Revision A 04/07/2003

# Kingbright®

## 52mm (2 INCH ) LED CLUSTER

BL0307-50-44

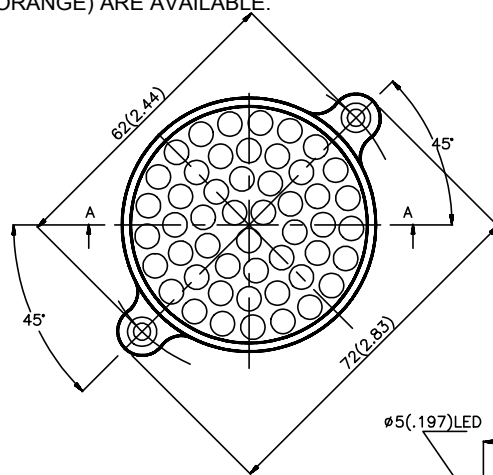
### Features

- WATERPROOF CONSTRUCTION.
- SUITABLE FOR OUTDOOR APPLICATIONS, SIGNBOARD OR MESSAGE BOARD, ETC.
- BOTH SINGLE COLOR AND MULTI-COLOR (RED, GREEN & ORANGE) ARE AVAILABLE.

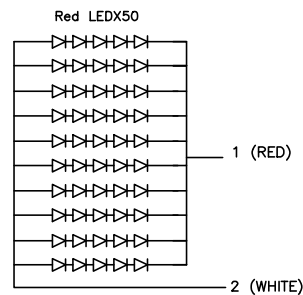
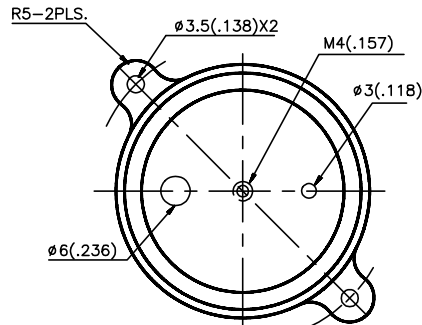
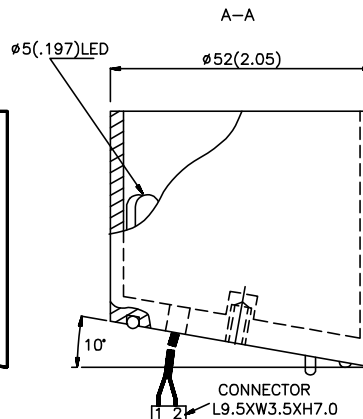
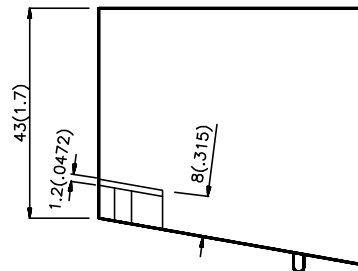
### Description

The Super Bright Red source color devices are made with Gallium Aluminum Arsenide Red Light Emitting Diode .

2



- Notes:
1. All dimensions are in millimeters (inches).
  2. Tolerance is 0.25(0.01") unless otherwise noted.
  3. Specifications are subjected to change without notice.

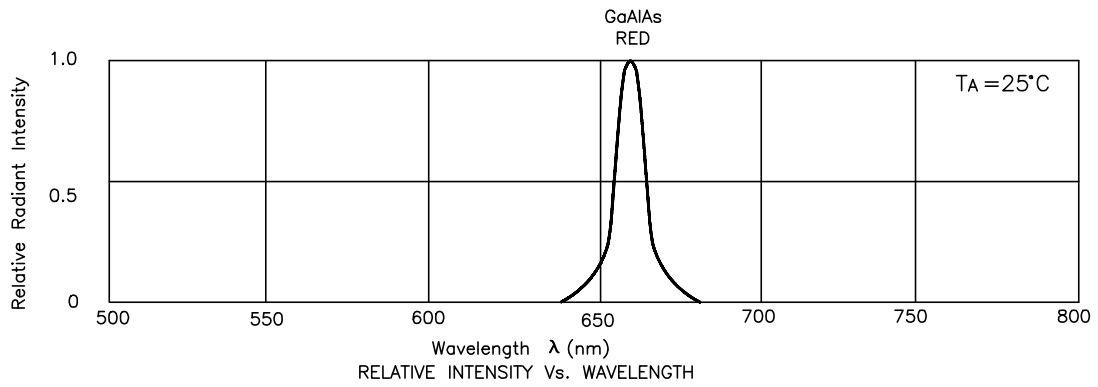


Electrical / Optical Characteristics at T<sub>A</sub>=25°C

Symbol	Parameter	Device	Min.	Typ.	Max.	Units	Test Conditions
I <sub>v</sub>	Luminous Intensity	BL0307-50-44	16000	-	23000	mcd	IF=200mA
θ	Viewing Angle		-	40	-	Deg	-
V <sub>F</sub>	Forward Voltage		-	9.6	11.2	V	IF=200mA
λ <sub>peak</sub>	Peak Wavelength		-	660	-	nm	IF=200mA
Δλ <sub>1/2</sub>	Spectral Line Halfwidth		-	20	-	nm	IF=200mA
I <sub>R</sub>	Reverse Current		-	-	100	uA	VR = 18V
FC	Response Frequency		-	8	-	MHz	-

Absolute Maximum Ratings at T<sub>A</sub>=25°C

Parameter	Super Bright Red	Units
Power dissipation	2.5	W
DC Forward Current	250	mA
Reverse Voltage	5	V
Operation Temperature	-5 to +65	°C
Storage Temperature	-10 to +85	°C



BL0307-50-44

