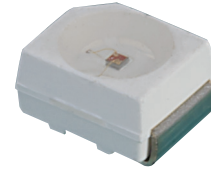


## Features:

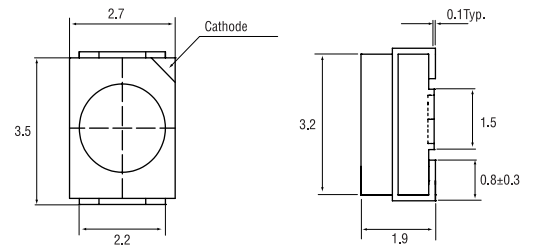
- 3.5x2.7x1.9mm Standard Directivity
- Superior Weather-resistance
- UV Resistant Epoxy
- Water Clear Type
- RoHS Compliant

## Applications

- Automotive Dashboard Lighting
- Traffic Signal Lamp
- Back Lighting



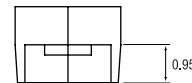
## Outline dimensions:



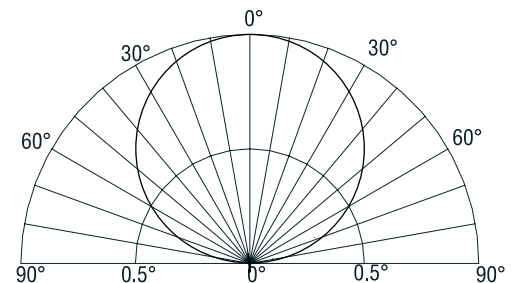
## Absolute maximum rating (Ta=25°C)

Item	Symbol	Value	Unit
DC Forward current	$I_F$	50	mA
Pulse forward current*	$I_{FP}$	150	mA
Reverse voltage	$V_R$	5	V
Power dissipation	$P_D$	200	mW
Operating temperature	$T_{opr}$	-30 to +85	°C
Storage temperature	$T_{stg}$	-30 to +100	°C
Lead soldering temperature	$T_{sol}$	260°C/5 sec	-

\* Pulse width max. 10ms. Duty ratio max. 1/10



## Directivity:



## Electrical - Optical characteristics (Ta=25°C)

Item	Symbol	Condition	Min.	Typ.	Max.	Unit
DC Forward voltage	$V_F$	$I_F=20mA$	1.8	2.0	2.4	V
DC Reverse current	$I_R$	$V_R=5V$	-	-	10	$\mu A$
Dominant wavelength	$\lambda_D$	$I_F=20mA$	585	590	595	nm
Luminous intensity	$I_v$	$I_F=20mA$	330	500	750	mcd
50% Power angle	$2\theta_{1/2}$	$I_F=20mA$	-	120	-	deg