

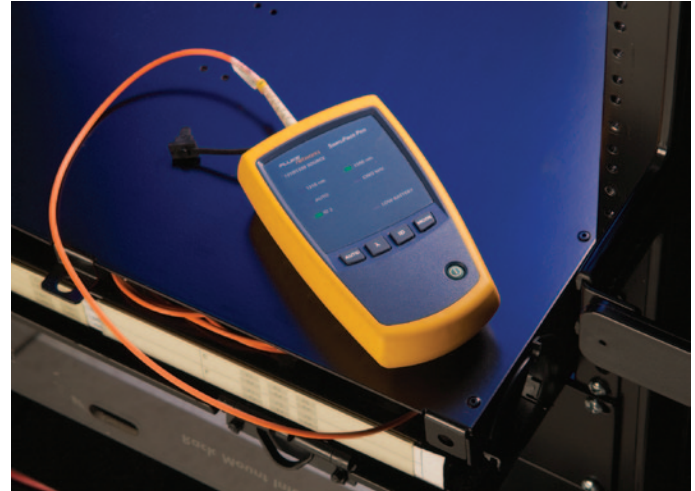


SimpliFiber Pro Multimode and Singlemode Sources

Sturdily built and encased in a durable molding, the next generation SimpliFiber Pro LED multimode and laser singlemode sources* retain the familiar intuitive four-button functionality from the popular workhorse SimpliFiber line, while incorporating additional features that make fiber testing even more simple. When combined with a SimpliFiber Pro optical power meter, these sources enable you to:

- Quickly and efficiently measure power and loss at SC, LC, and ST connections using the dual-wavelength testing feature in which both 850 and 1300 nm or 1310 and 1550 nm wavelengths can be transmitted simultaneously
- Conveniently save measurements taken at both wavelengths into one record
- Eliminate time-consuming mistakes with the automatic wavelength detection ability
- Quickly identify patch panel cable routing without the assistance of a talk set and another technician

*The multimode source is standard in the FTK1000, FTK1300, FTK1350, and FTK1450 kits; the singlemode source is standard in the FTK2000 and FTK1450 kits or available separately as a standalone module.



Multimode source Singlemode source Both multimode and singlemode sources are available in the FTK1450 Complete Verification Kit

Specifications

| Multimode Optical Source | |
|-------------------------------------|--|
| Emitter Type | LED |
| Central Wavelength | 850 nm, 1300 nm |
| Wavelength Accuracy | <ul style="list-style-type: none"> • 850 nm: +/-30 nm • 1300 nm: +/- 20 nm |
| Spectral Width (FWHM) | <ul style="list-style-type: none"> • 850 nm: 50 nm (typical) • 1300 nm: 135 nm (typical) |
| Minimum Output Power | 850/1300 nm: ≥ -20 dBm |
| Power Output Stability ¹ | ± 0.1 dB over 8 hours |
| Auto Dual-Wavelength Switching | Yes. Can be enabled/disabled by user. |
| Optical Output Connector | Fixed SC ² |
| FindFiber Code Generation | Yes. Fixed at ID 1. |
| Modes | CW, 2 kHz modulated, Auto-wavelength |
| Power Requirement | 2 AA Alkaline batteries. |
| Battery Life ³ | 40 hrs (typical) |
| Automatic Power Off | 30 minutes (can be disabled by user) |
| Low Battery Warning | Yes, LED blinks |
| Size (L x W x H) | 5.6 in x 3.2 in x 1.6 in (14.2 cm x 8.1 cm x 4.1cm) |
| Weight | 9.8 oz (278 g) |

Specifications (continued)

| Singlemode Optical Source | |
|-------------------------------------|--|
| Emitter Type | FP Laser: dual 1310 nm/1550 nm |
| Central Wavelength | 1310 nm, 1550 nm |
| Wavelength Accuracy | <ul style="list-style-type: none"> • 1310 nm: +/- 20 nm • 1550 nm: +/- 30 nm |
| Spectral Bandwidth (RMS) | <ul style="list-style-type: none"> • 1310 nm: 2 nm (maximum) • 1550 nm: 3 nm (maximum) |
| Minimum Output Power | 1310/1550 nm: ≥ -7 dBm (typical) |
| Power Output Stability ¹ | ± 0.25 dB over 8 hours |
| Auto Dual-Wavelength Switching | Yes. Can be enabled or disabled by user. |
| Optical Connector | Fixed SC ² |
| Launch Condition | 9/125 μ m fiber |
| FindFiber Code Generation | Yes. Fixed at ID 2. |
| Modes | CW, 2 kHz modulated, Auto-wavelength |
| Power Requirement | 2 AA Alkaline batteries. |
| Battery Life ³ | 30 hrs (typical) |
| Automatic Power Off | 30 minutes (can be enabled or disabled by user) |
| Low Battery Warning | LED blinks. |
| Size (L x W x H) | 5.6 in x 3.2 in x 1.6 in (14.2 cm x 8.1 cm x 4.1cm) |
| Weight | 9.8 oz (278 grams) |

¹ 23° C \pm 2° C, after 5 minutes warm-up time

² LC and ST connectors can be tested using hybrid test-reference cord accessories.

³ In auto-wavelength mode, battery life depends on the condition and type of batteries used. Fluke Networks recommends alkaline batteries.

Fluke Corporation
P.O. Box 777, Everett, WA USA 98206-0777

Fluke Networks operates in more than 50 countries worldwide. To find your local office contact details, go to www.flukenetworks.com/contact.

©2012 Fluke Corporation. All rights reserved.
Printed in U.S.A. 1/2012 3441675 D-ENG-N Rev C

New time-saving capabilities, same simple functionality