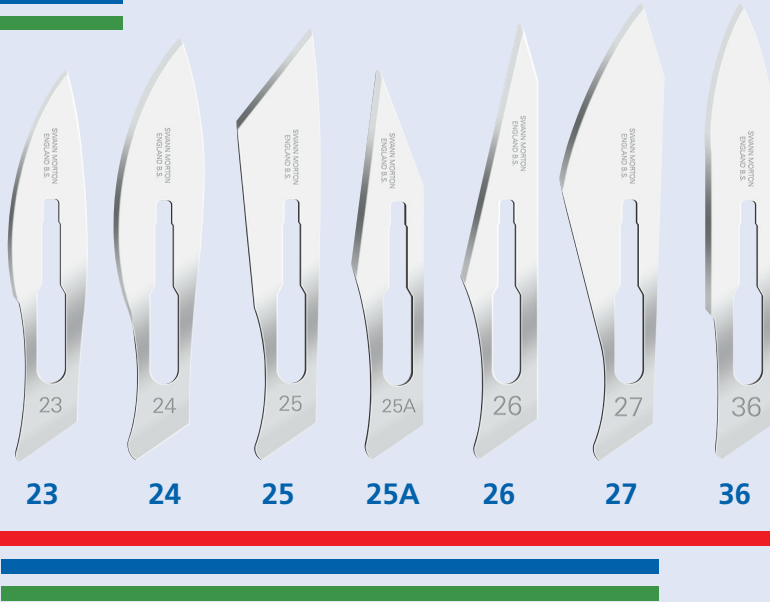
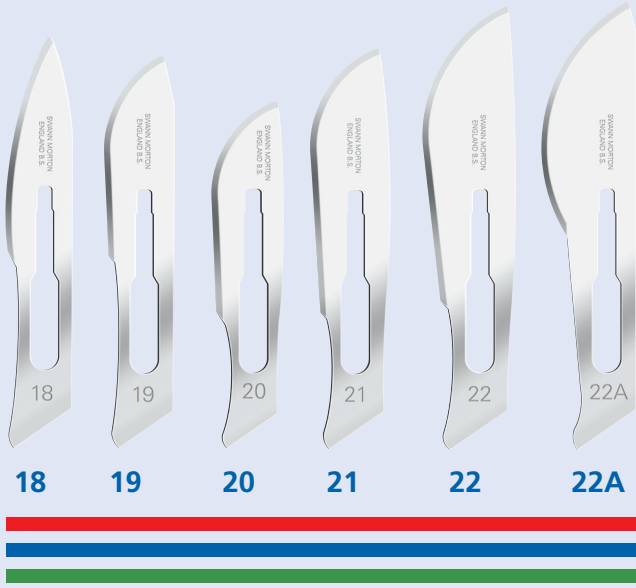


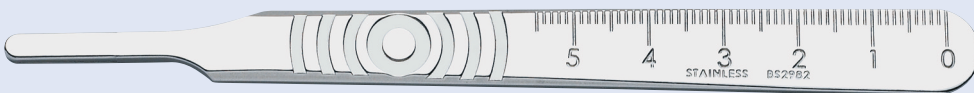
No 4 Fitment Surgical Handles & Blades

Standard Surgical Blades - Sterile

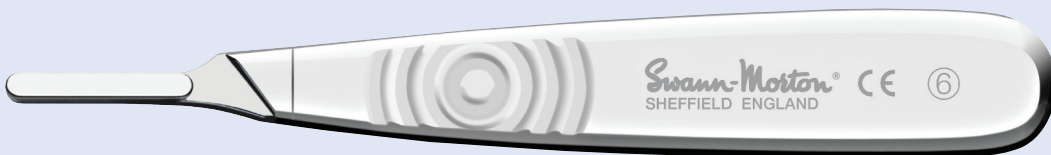
- Sterile Blades in Carbon Steel.
- Non-Sterile Blades in Carbon Steel.
- Sterile Blades in Stainless Steel.



No 4 Handle



No 4 Handle (reversed)



No 6 Handle

No 4L Handle