

## FASTSTAR Range LED FLOODLIGHT



### 10W, 30W, 50W USER MANUAL

[www.nightsearcher.co.uk](http://www.nightsearcher.co.uk)

Specifications	10W	30w	50w
Light Output	800lm	2400lm	4000lm
Product size (LxWxD)	140mmx36mmx145m	195mmx37mmx200m	235mmx39mmx242m
Product weight	474kg	900kg	1.4kg
NS Part No.	NSFASTSTAR10	NSFASTSTAR30	NSFASTSTAR50

#### Safe disposal of waste electrical products, batteries and bulbs



If at any time, you need to dispose of this product or parts of this product: please note that waste electrical products, bulbs and batteries should not be disposed of with ordinary household waste. Recycle where facilities exist. Check with your local authority for recycling advice. Alternatively, NightSearcher is happy to take receipt of this product at end-of-life and will recycle it on your behalf.

#### GUARANTEE TERMS NightSearcher

NightSearcher products have been carefully tested and inspected before shipment and are guaranteed to be free from defective materials and workmanship for a period of 36 months (battery not covered) from the date of purchase, provided that the enclosed instructions have been followed. Should you experience problems with your NightSearcher product, please return the item, complete with any chargers, to your place of purchase or contact NightSearcher Ltd direct.

Your NightSearcher guarantee does not apply to normal wear and tear, nor does it cover any damage caused by misuse, careless or unsafe handling, alterations, accidents or repairs attempted or made by any personnel without prior approval from NightSearcher Ltd. Your NightSearcher guarantee is not effective unless you can provide a dated proof of purchase. Please note that this guarantee does not affect your statutory rights. If at any time, you need to dispose of this product or parts of this product: Please note that waste electrical products, batteries and bulbs should not be disposed of with household waste. Please recycle where facilities exist, check with your local authority for recycling advice.

NightSearcher Limited - Unit 4 Applied House, Fitzherbert Spur, Farlington, Portsmouth, Hampshire PO6 1TT UK.



#### Installation - SAFETY FIRST

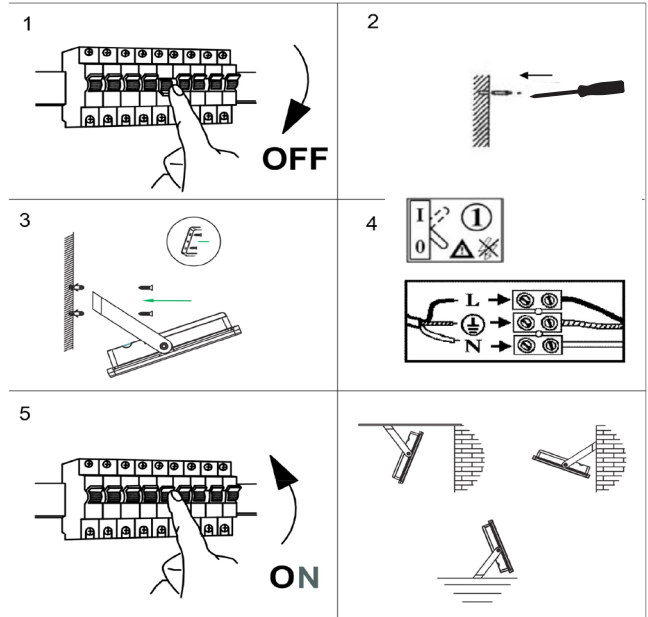
- Remember to switch off the mains power at the consumer unit.
- All new and modified installations must comply with the latest IEE Wiring Regulations and use a qualified electrician to install.
- Please ensure correct IP65 rated junction box is used for making power connection.
- Follow the instructions below to install your FastStar floodlight successfully.

#### Safety Notes

- The front of this floodlight is made of tempered glass, which cannot be replaced.
- Please take care while installing. If it gets damaged the floodlight must be disposed of and fully replaced. See disposal instructions.
- LED lamps are extremely bright. To avoid possible damage to the eyes, do not stare into an LED beam or shine into other peoples eyes.
- If the mains lead becomes damaged, it must be replaced by the manufacturer or a qualified electrician.
- Under no circumstances can the floodlight be mounted on to flammable surfaces.
- The floodlight is suitable for use in air temperatures between -20°C and +50°C.

#### Positioning

- This floodlight is suitable for outdoor lighting applications. Do not use in areas where an explosive or chemical atmosphere may exist. Do not use in areas where ventilation is restricted.
- It is suitable for mounting on plasterboard, wood or masonry surfaces. Highly flammable surfaces such as plastic or polystyrene must not be used. Do not install on damp or conductive surfaces such as metal. It should be placed away from flammable materials.
- Before drilling any fixing holes, check that there are no hidden obstructions behind the mounting surface such as pipes or cables.
- The recommended height for installation of the floodlight is between 1.5 metres.
- Ensure that there is space around the floodlight to allow adequate circulation of air.



- Switch off the power
- Use the floodlight bracket to mark the position of the fixing holes
- Drill the fixing holes, and fix the floodlight into position using the screws and wall plugs provided. Check that it is securely fixed.
- Connect the mains lead from the floodlight to an IP65 rated junction box. Ensure the correct polarities for Live, Earth and Neutral are observed:
  - Connect the green/yellow earth wire to the earth terminal 'E'
  - Connect the brown live wire to the live terminal 'L'
  - Connect the blue neutral wire to the neutral terminal 'N'
  - After wiring, check there are no bare wires, that all wires have been correctly connected and that the wire restraint is tight.
  - Check that all the wires have been correctly connected and that the cable restraint has been tightened.
- Switch on the electricity to check that the floodlight illuminates.
- Adjust the angle of the floodlight so that it illuminates the required area. Tighten the floodlight brackets.