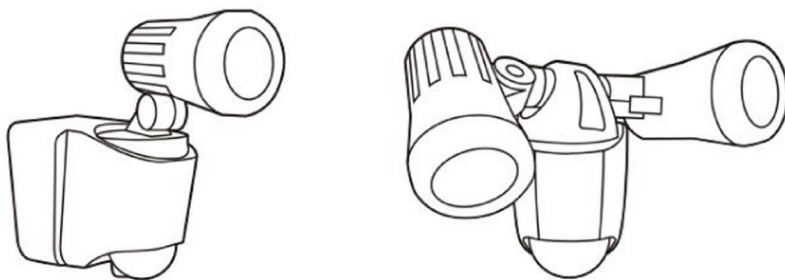


GP[®] LED

GB

PRODUCT SPECIFICATION



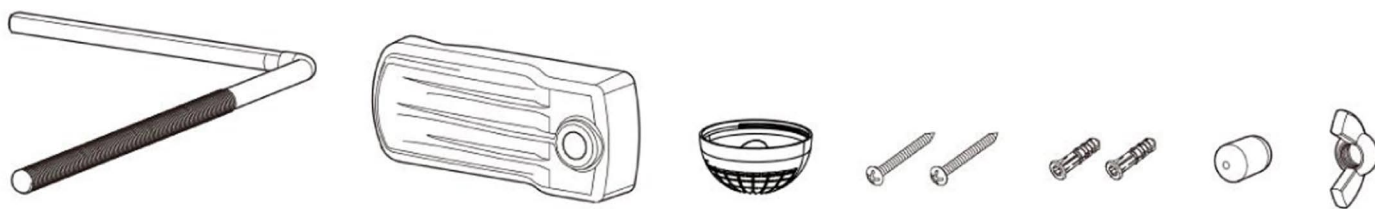
	SAFEGUARD RF1	SAFEGUARD RF2
Operating voltage	6.0V	6.0V
Maximum wattage	1.0W	1.0W * 2
Batteries	4 * 1.5V LR6 AA	4 * 1.5V LR6 AA
Lumens	~ 50 lm	~ 100 lm
Operating temperature	-20 °C to +50 °C	-20 °C to +50 °C
IP rating	IP 55	IP 55

PRODUCT FEATURES

- Security LED light
- Cordless and easy installation
- Horizontally and vertically adjustable light direction
- PIR sensor
- Adjustable sensor angle
- For use indoors and outdoors

PACKAGE INCLUDES

- GP Safeguard LED light
- Accessories: L-bar, end clamp, sensor masks, screws, raw plugs, wing nut and L-bar cap
- 4 * GP15AU 1.5V LR6 AA Ultra Alkaline battery



PRODUCT INSTALLATION

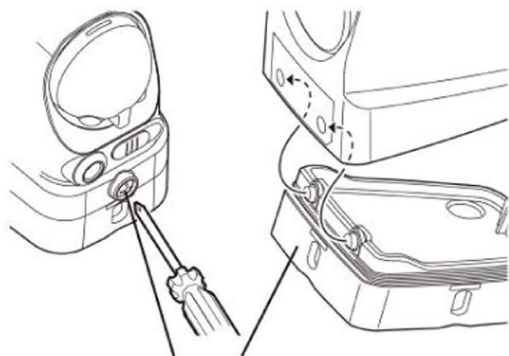
Method A: Permanent installation (Diagram A)

- Release (but do not remove) the screw at the base of the Safeguard.
- Detach the wall mounting plate at the base from the Safeguard.
- Use the wall mounting plate as a template, mark the position for the screws. Drill holes and insert the raw plugs. Attach the wall mounting plate with the screws.
- Re-attach the Safeguard and tighten the screw at the base of the Safeguard.

Method B: Removable installation when Method A is not feasible (Diagram B)

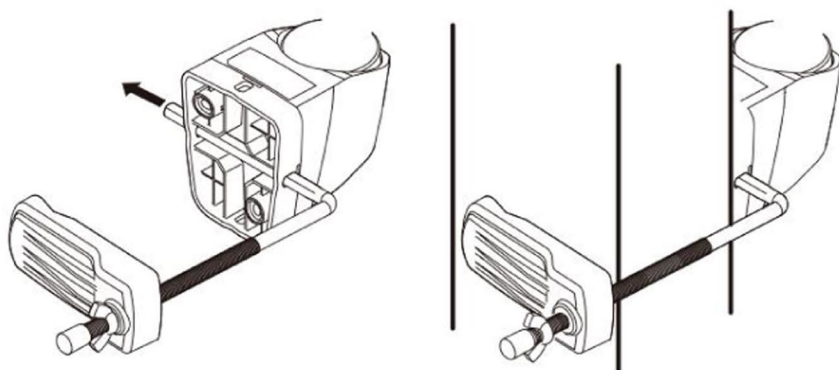
- Insert the L-bar in the Safeguard base.
- Place the Safeguard on a beam or similar surface.
- Insert end clamp through the L-bar and tighten wing nut to secure Safeguard.
- Push L-bar cap on the end of the L-bar.
- The beam thickness must be minimum of 4.5cm.

Diagram A

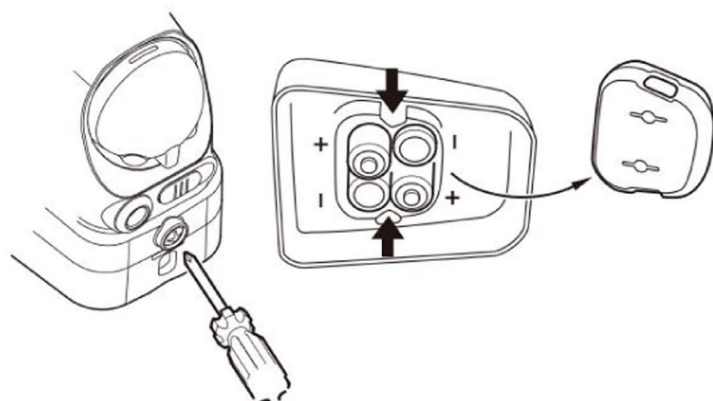


Release the screw and detach the wall mounting plate from the Safeguard.

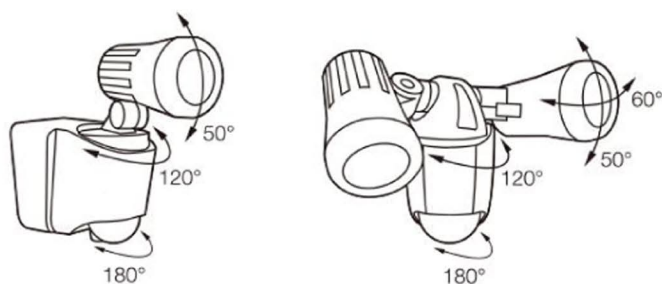
Diagram B



BATTERY INSTALLATION



ANGLE ADJUSTMENTS



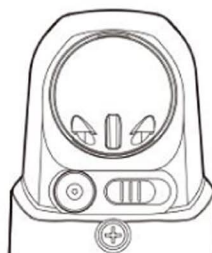
OPERATING INSTRUCTIONS

Light modes

OFF: Safeguard switched off

ON: Safeguard turned on permanently

AUTO: Safeguard activates when it detects movement at night. It switches on for approx. 10 seconds but will continue to stay on as long as movement is detected.



OFF

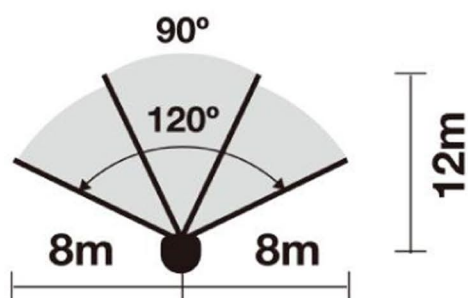


ON

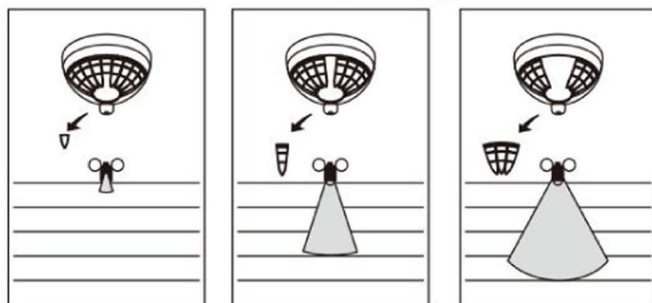


AUTO

SENSOR DETECTION AREA



Sensor detection area can be reduced by covering the sensor with a sensor mask, see diagram.



ATTENTION

1. PIR sensors detect changes in infra-red light in the form of heat therefore the surrounding ambient temperature can affect its responsiveness.
2. Placing the Safeguard too close to strong ambient light may affect its sensor response.
3. The Safeguard is most sensitive when people cross its sensor detection area, see diagram C.
4. Do not immerse, incinerate or disassemble the unit.
5. Do not mix old and new batteries.
6. Close supervision is necessary when operated near children.

Diagram C

