

268
HANDHELD CASES

292
UNIVERSAL ENCLOSURES

318
HEAVY DUTY AND ELECTRICAL ENCLOSURES

342
DESKTOP AND INSTRUMENT CASES

348
DEVELOPMENT BOARD ENCLOSURES

367
VERSATILE IOT AND SENSOR ENCLOSURES

370
CUSTOM SIZED ENCLOSURES

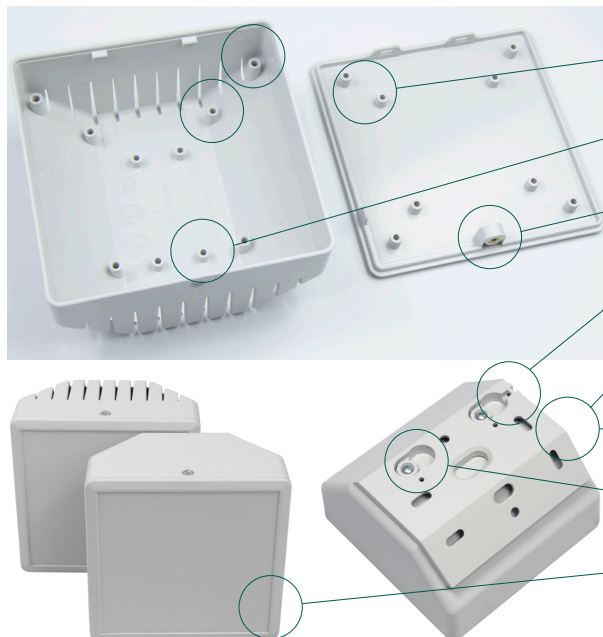
1500 Series Universal Smart Enclosure

Product overview

The UK manufactured 1500 Series Universal Smart Enclosure has a premium quality and modern aesthetic with many features and benefits and is available in black, white or grey with the choice of a solid or vented body. The innovative and versatile 45° angled enclosure and bracket allows it to be mounted directly onto irregular corners and walls. It has multi-level PCB mounting bosses with one level designed to fit development boards such as the Raspberry Pi.



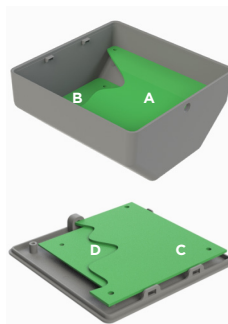
Key features



- Multiple PCB mounting points**
Designed to accommodate Raspberry Pi boards.
- Wall mount bracket mounting points**
For attaching the bracket to the back of the enclosure
- Secured by a single screw**
Allowing for quick and easy assembly
- Security screw hole in the bracket**
For increased protection against theft
- Achieve a 45° mounting angle on any surface**
Due to engineered design features
- Mount to room corners with ease**
With the innovative 45° angled bracket
- Simple slide and lock mechanism**
With built in cable entry point
- Recessed lid**
Perfect for adding digital printing, labels or keypads

PCB positions

DIMENSIONS FOR EACH POSITION			
PCB MOUNTING POSITION		MAX PCB DIMENSIONS	MOUNTING HOLE SPACING
BASE	A	Upper	93mm x 93mm
	B	Lower	93mm x 65.8mm
LID	C	Upper	91.5mm x 91.5mm
	D	Lower	70mm x 70mm



PART NUMBERS (ENCLOSURE ONLY)			
BODY TYPE	GREY (GY)	BLACK (BK)	WHITE (WH)
SOLID	CB1500-10SGY	CB1500-10SBK	CB1500-10SWH
VENTED	CB1500-10VGY	CB1500-10VBK	CB1500-10VWH

INCLUDED WITH ENCLOSURE ONLY	
PART DESCRIPTION	QUANTITY PER KIT
ENCLOSURE (BASE & LID)	1
LID SCREW (M3 x 10 CSK POZI)	1

PART NUMBERS (KITS)			
BODY TYPE	GREY (GY)	BLACK (BK)	WHITE (WH)
SOLID	CB1500-10SGY-KIT	CB1500-10SBK-KIT	CB1500-10SWH-KIT
VENTED	CB1500-10VGY-KIT	CB1500-10VBK-KIT	CB1500-10VWH-KIT

INCLUDED WITH KIT	
PART DESCRIPTION	QUANTITY PER KIT
ENCLOSURE (BASE & LID)	1
LID SCREW (M3 x 10 CSK POZI)	1
45° WALL MOUNT BRACKET	1
WALL MOUNT LUGS	2
LUG SCREWS (NO 4 x 3/8" PAN POZI SELF TAPPING)	2
LUG SCREWS (M3 x 10 CSK POZI)	2
LUG NUTS (M3 FULL NUT)	2
WALL MOUNT SECURITY SCREW (2.9 x 1 SELF TAPPING)	1



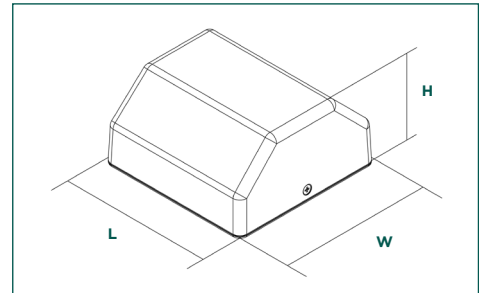
1500 Series Universal Smart Enclosure



INDIVIDUAL SIZE DIMENSIONS		
EXTERNAL DIMENSIONS (LxWxH)	INTERNAL DIMENSIONS (LxWxH)	WALL THICKNESS
100mm x 100mm x 53.2mm	96mm x 96mm x 48.2mm	2mm

RANGE SPECIFICATION

STANDARD UNIT INCLUDES	1 x base, 1 x lid, 1 x lid screw (M3 x 10 CSK Poz)			
MATERIALS	Enclosure	UL94-V0 ABS		
	Wall Mount Bracket	UL94-V0 ABS		
	Wall Mount Lugs	UL94-V0 ABS		
	M3 Insert (Lid)	Brass		
	All Screws / Nuts	BZP (Bright Zinc plated Steel)		
COLOURS	Grey	RAL7047		
	Black	RAL9005		
	White	RAL9003		
COMPLIANCE	RoHS compliant			
IP RATING	Vented	IP30		
	Solid	IP40		
OPERATING TEMPERATURE	-10°C to +80°C			
TEST RESULTS	Standard	Test	Result	Test report
	UL94	Flammability	V0	TR101
	EN 62208	Thermal stability	Pass	TR105
	EN 62208	Static loads	200g	TR100
SCREW TORQUE	Self tapping (security and mounting lugs)	0.2Nm		Max insertions =2
	M3 (Lid and Mounting Lugs)	0.5Nm		Max insertions >1000
PURCHASING INFORMATION	Country of origin	Great Britain (GB)		
	Commodity code	3923101000		
	Weight	0.087g		
	Enclosure type	Universal		
OPTIONS	For alternative colours and materials MOQs will apply.			



Mounting options include, but are not limited to:

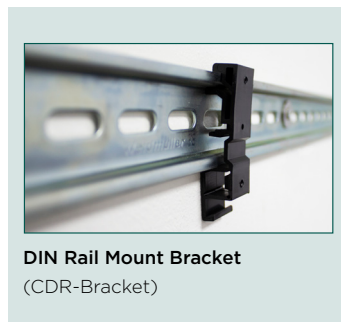
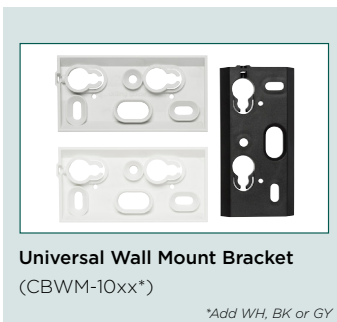
- Corner mounting (ceiling to wall / wall to wall)
- Irregular walls or corners
- 45° angled up / down / left / right
- Mounted flat to a wall or surface
- Desk mounted at 45°



Potential industries / applications

Safety monitoring, door entry control, security sensors, social distance monitoring, air detection and more.

Accessories



Customisation options

Digital printing, screen printing, machining / drilling and engraving.



268
HANDHELD CASES

292
UNIVERSAL ENCLOSURES

318
HEAVY DUTY AND ELECTRICAL ENCLOSURES

342
DESKTOP AND INSTRUMENT CASES

348
DEVELOPMENT BOARD ENCLOSURES

367
VERSATILE IOT AND SENSOR ENCLOSURES

370
CUSTOM SIZED ENCLOSURES

PLASTIC ENCLOSURES