

B5
DC LINEAR SOLENOID

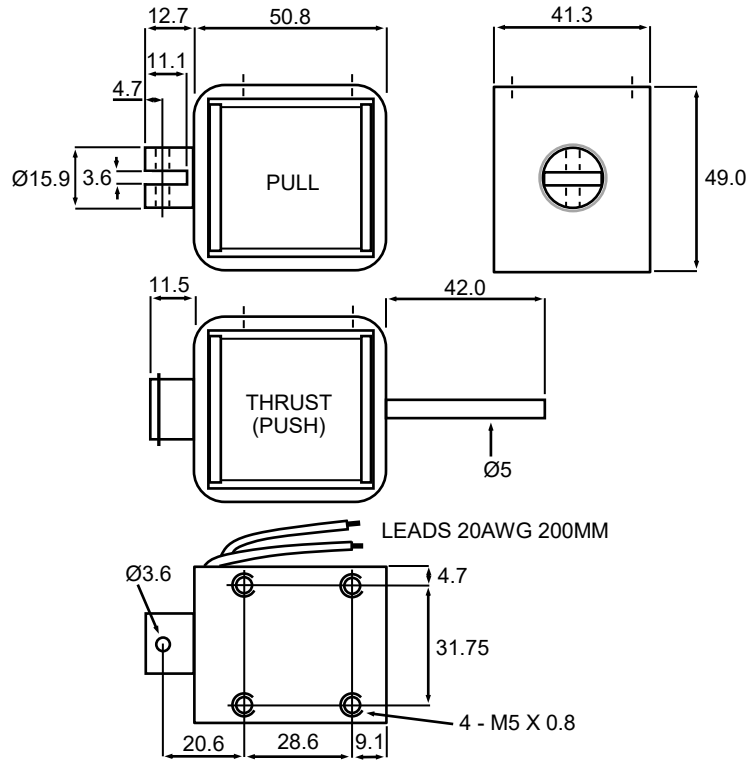


Availability
PULL - LONG STROKE
THRUST (PUSH) - STANDARD
STROKE

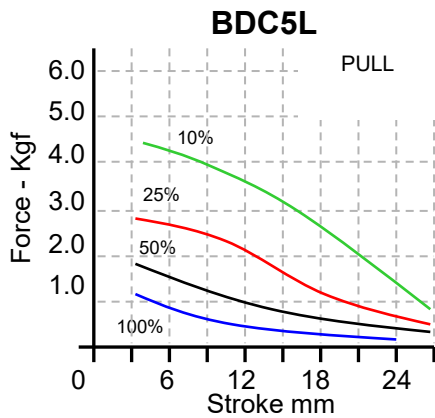
Solenoid shown in energised position

Weight complete 566g
Plunger weight 85g max

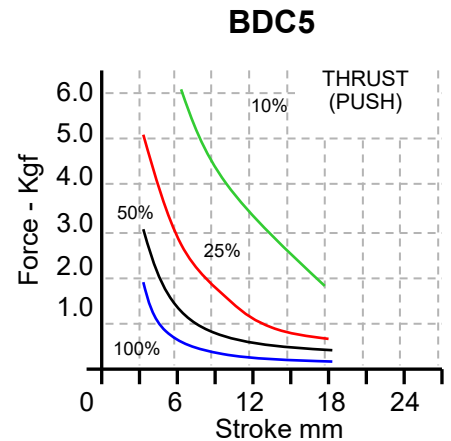
Forces shown are at Working temperature



DIMENSIONS IN MM



DC Watts
100% Rtg = 15W
50% Rtg = 30W
25% Rtg = 60W
10% Rtg = 150W



** Please note: Fixing, plunger coupling, thrust rods and lead length can all be customised **
We reserve the right to alter or amend designs without prior notice.