

EW-7833UAC

Quick Installation Guide

05-2016 / v1.0

Edimax Technology Co., Ltd.

No.3, Wu-Chuan 3rd Road, Wu-Gu, New Taipei City 24891, Taiwan

Email: support@edimax.com.tw

Edimax Technology Europe B.V.

Fijenhof 2, 5652 AE Eindhoven, The Netherlands

Email: support@edimax.nl

Edimax Computer Company

3350 Scott Blvd., Bldg.15 Santa Clara, CA 95054, USA

Live Tech Support: 1(800) 652-6776

Email: support@edimax.com

I. Product Information.....	1
I-1. Package Contents	1
I-2. LED Status	1
I-3. System Requirements.....	1
I-4. Safety	2
II. Installation.....	3
III. Windows.....	4
III-1. Driver Installation	4
III-2. Driver Uninstallation.....	8
III-2-1. Windows 7, 8.1 & 10.....	8
IV. Mac OS	9
IV-1. Driver Installation	9
IV-2. Driver Uninstallation.....	14
V. Disabling Network Adapters	15
V-1. Windows 7	15
V-2. Windows 8.1 & 10.....	15
V-4. Mac	16
VI. Using The Adapter.....	18
VI-1. Windows	18
VI-2. Mac	19
VI-4. WPS Setup.....	21

Multi-Language Quick Installation Guide (QIG) on the CD

Čeština: Českého průvodce rychlou instalací naleznete na přiloženém CD s ovladači

Deutsch: Finden Sie bitte das deutsche S.A.L. beiliegend in der Treiber CD

Español: Incluido en el CD el G.R.I. en Español.

Français: Veuillez trouver l'français G.I.R ci-joint dans le CD

Italiano: Incluso nel CD il Q.I.G. in Italiano.

Magyar: A magyar telepítési útmutató megtalálható a mellékelt CD-n

Nederlands: De nederlandse Q.I.G. treft u aan op de bijgesloten CD

Polski: Skrócona instrukcja instalacji w języku polskim znajduje się na załączonej płycie CD

Português: Incluído no CD o G.I.R. em Portugues

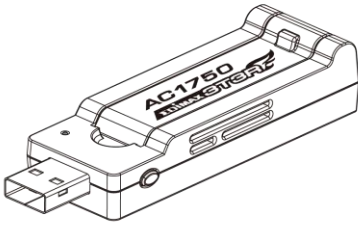
Русский: Найдите Q.I.G. на русском языке на приложенном CD

Türkçe: Ürün ile beraber gelen CD içinde Türkçe Hızlı Kurulum Kılavuzu'nu bulabilirsiniz

Українська: Для швидкого налаштування Вашого пристрою, будь ласка, ознайомтесь з інструкцією на CD

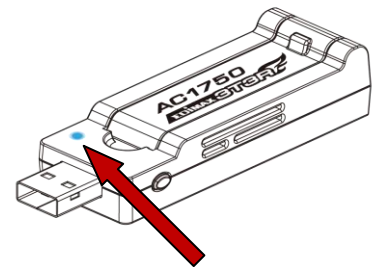
I. Product Information

I-1. Package Contents



I-2. LED Status

LED	LED Status	Description
WLAN	On	Wireless activity: transmitting or receiving data.
	Off	No wireless activity.



LED

I-3. System Requirements

- Windows 7/8/8.1~, Mac OS X 10.7~, Linux
- Minimum USB 2.0 Port (USB 3.0 recommended)
- Hard Disk: 100MB
- CD-ROM Drive

I-4. Safety

In order to ensure the safe operation of the device and its users, please read and act in accordance with the following safety instructions.

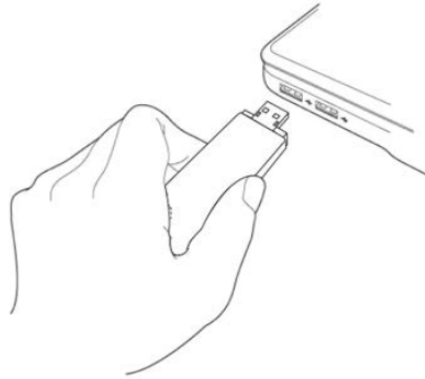
- 1.** The wireless adapter is designed for indoor use only; do not place the wireless adapter outdoors.
- 2.** Do not place the wireless adapter in or near hot/humid places, such as a kitchen or bathroom.
- 3.** The wireless adapter contains small parts which are a danger to small children under 3 years old. Please keep the wireless adapter out of reach of children.
- 4.** There are no user-serviceable parts inside the wireless adapter. If you experience problems with the wireless adapter, please contact your dealer of purchase and ask for help.
- 5.** The wireless adapter is an electrical device and as such, if it becomes wet for any reason, stop using it immediately. Contact an experienced electrical technician for further help.

II. Installation

1. Switch on your computer and insert the USB adapter into an available USB port of your computer.



Never use force to insert the USB adapter.



2. Insert the included CD-ROM into the CD drive of your computer.



The setup wizard is also available for download from the Edimax website.

3. For **Windows** users the setup wizard will open. For **Mac** users the CD's "Mac" folder will open.



If the CD doesn't auto-run or if you downloaded the setup wizard, please browse to the "Autorun" or "Mac" folder of the CD for Windows or Mac users respectively.

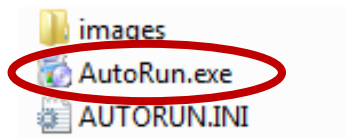
4. Please follow the instructions in the appropriate chapter for your operating system.

III. Windows

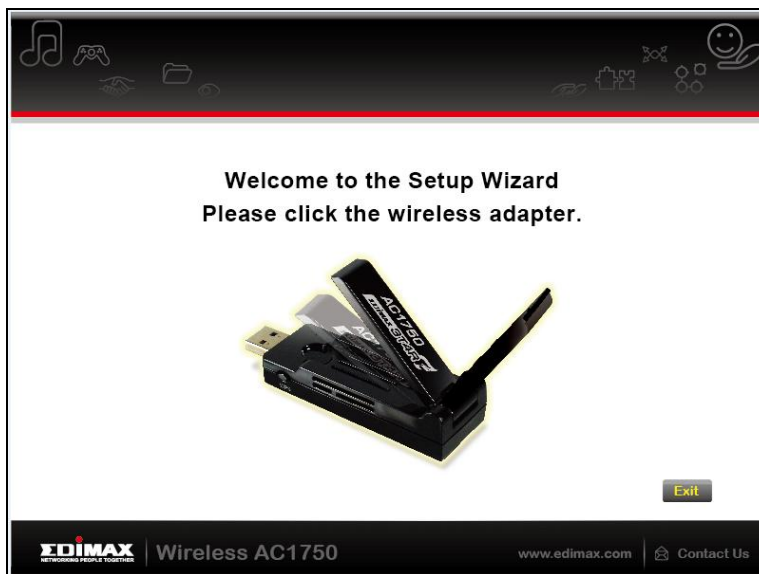
III-1. Driver Installation



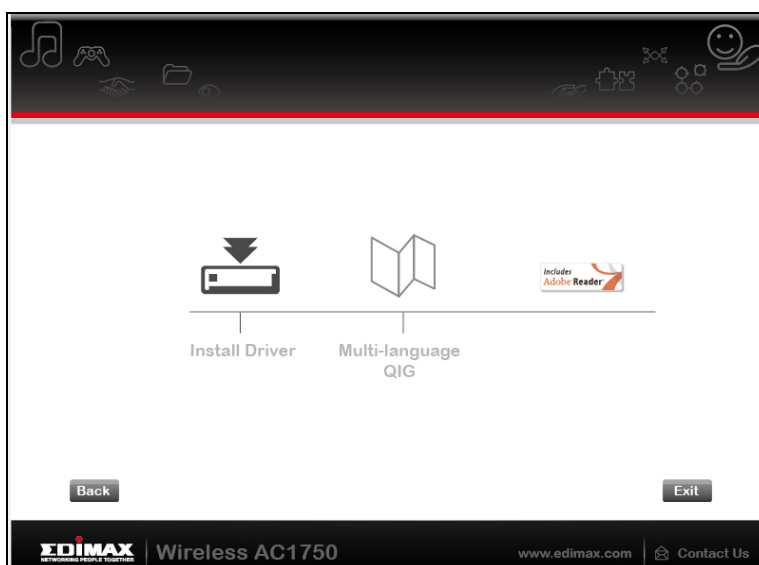
If the CD didn't auto-run, please open the "Autorun.exe" file to start the setup wizard.



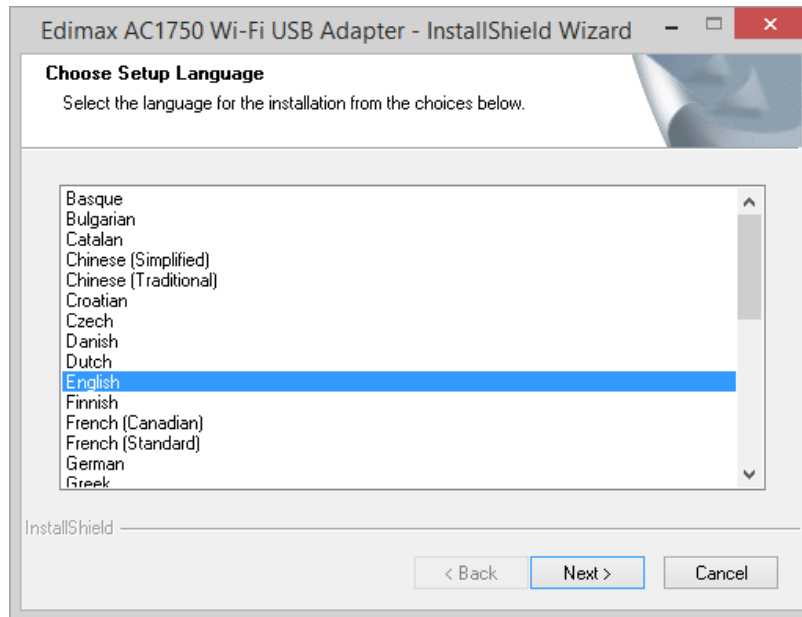
1. Click the EW-7833UAC wireless USB adapter to continue.



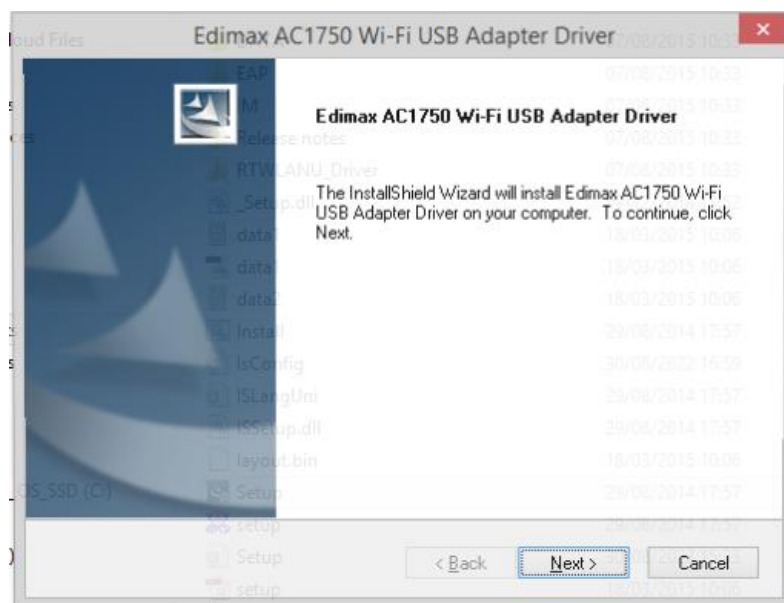
2. Click "Install Driver" to continue.



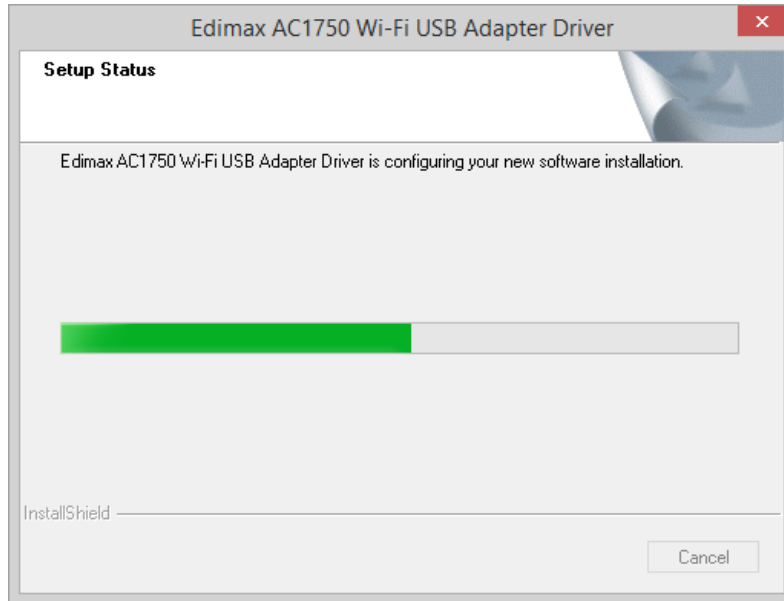
3. Select your language and click “Next”.



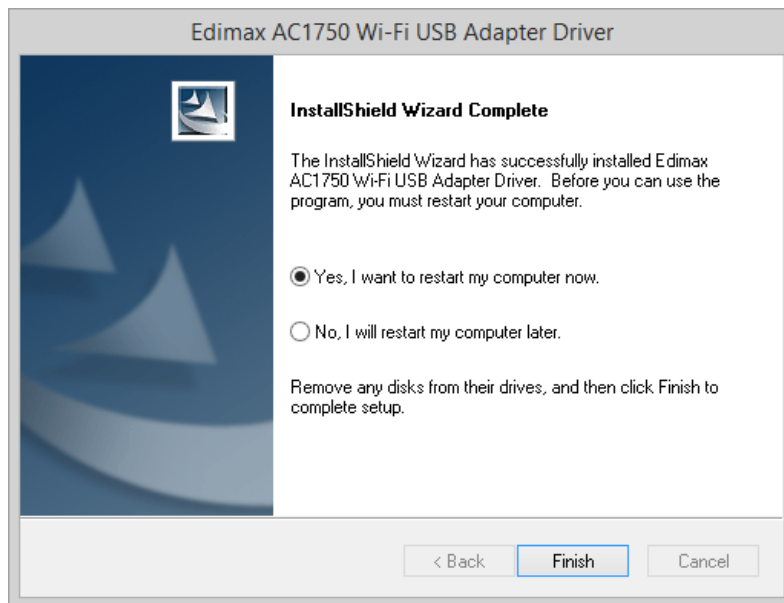
4. Click “Next” to continue.



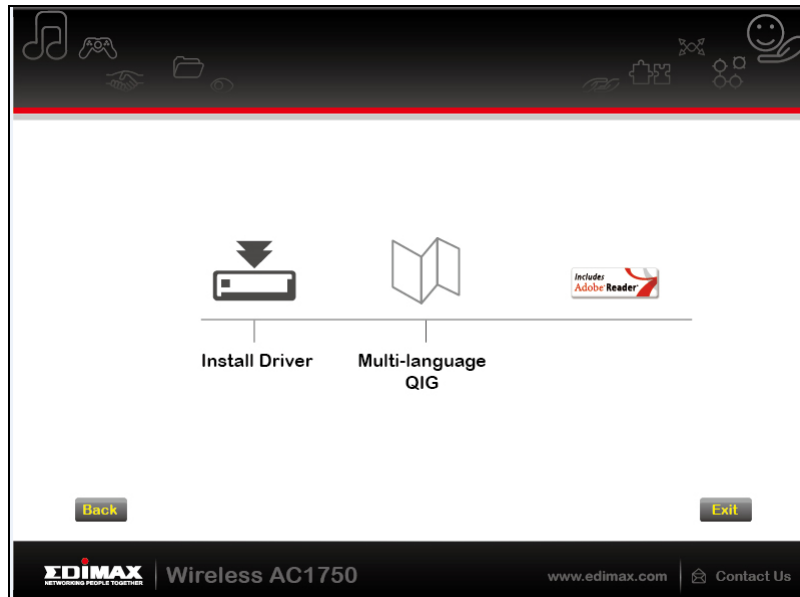
5. Please wait while the driver is installing.



6. You need to restart your computer before using the wireless adapter. Choose whether to restart your computer now or later, and click “Finish”.



7. Click “Exit” to close the setup wizard.



The multi-language QIG is also included on the CD-ROM. To open it click “Multi-language QIG”.

8. Please disable any other wireless adapters as described in **V. Disabling Network Adapters**. Then, Windows users can connect to an available Wi-Fi network as usual. For guidance on doing so, please refer to **VI. Using The Adapter**.

III-2. Driver Uninstallation

To uninstall drivers for your adapter, use the **Windows Control Panel** built-in **Programs and Features, Uninstall a Program** or **Add or Remove Programs** feature. An example is shown below:

III-2-1. Windows 7, 8.1 & 10

1. Open Control Panel using the Start menu or Search function.
2. Select **Uninstall a program** under the **Programs** category.

Adjust your computer's settings

System and Security
Review your computer's status
Save backup copies of your files with File History
Back up and Restore (Windows 7)
Find and fix problems

Network and Internet
View network status and tasks
Choose homegroup and sharing options

Hardware and Sound
View devices and printers
Add a device

Programs
Uninstall a program

Best match

- Control Panel (Desktop app)

Apps

- Settings
- Intel® HD Graphics Control Panel

Web

- control panel
- control panel windows 10
- control panel settings
- control panel shortcut

Settings

- Lenovo HD Audio Manager

My stuff | Web

control panel

3. Select **Edimax AC1750..** and click **Uninstall**.

Uninstall or change a program

To uninstall a program, select it from the list and then click Uninstall, Change or Repair.

Name	Publisher	Installed On	Size	Version
Cisco LEAP Module	Cisco Systems, Inc.	18/01/2016	632 KB	1.0.19
Cisco EAP-FAST Module	Cisco Systems, Inc.	18/01/2016	1.53 MB	2.2.14
Cisco PEAP Module	Cisco Systems, Inc.	18/01/2016	1.22 MB	1.1.6
Edimax AC1750 Wi-Fi USB Adapter Driver	Edimax Technology Co., Ltd.	18/01/2016		1.00.0243
Adobe Edge Animate CC 2014.1	Adobe Systems Incorporated	17/01/2016	341 MB	5.0.1

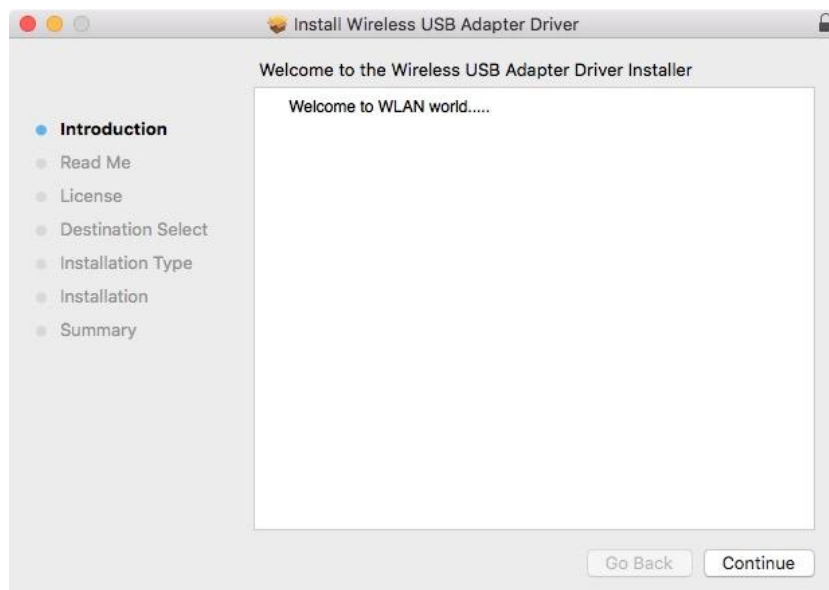
IV. Mac OS

IV-1. Driver Installation

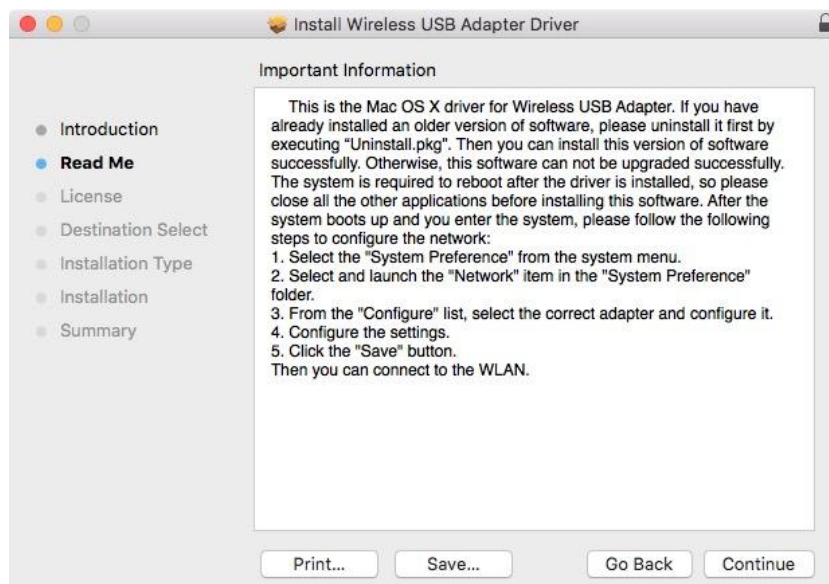
1. Open the “RTLWLANU_MacOS..” folder and double click the “Installer.pkg” file to open the driver installation wizard.



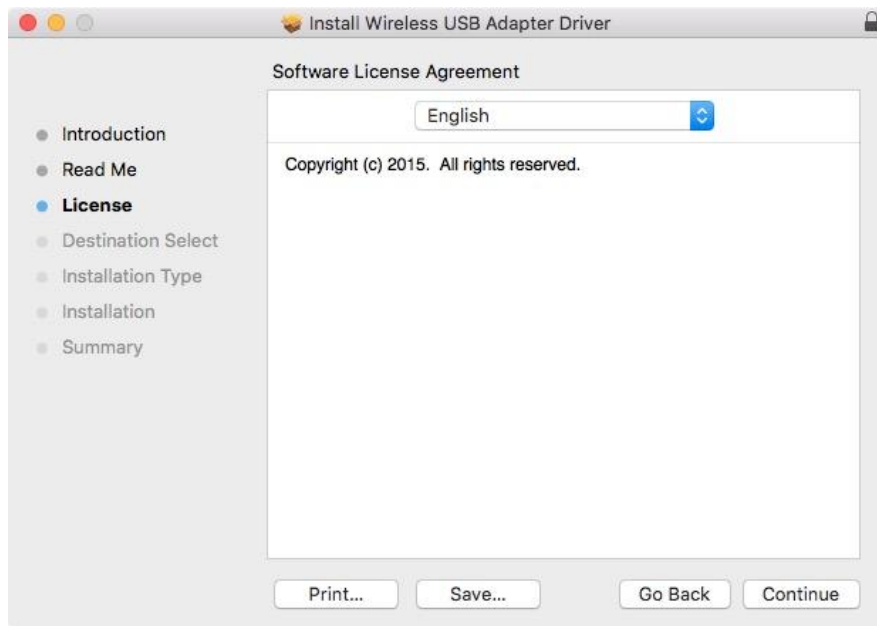
2. Click “Continue” to proceed to the next step.



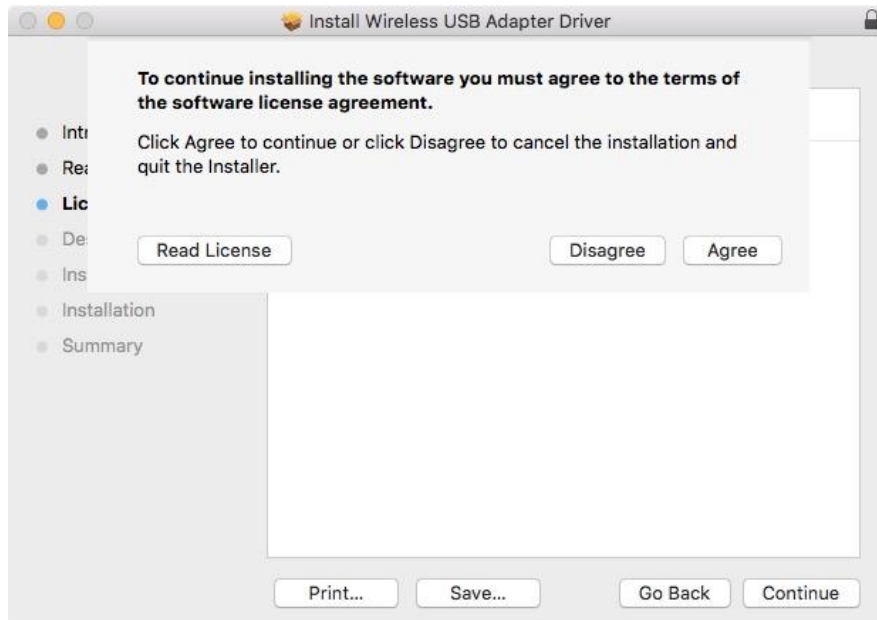
3. The next screen displays important information, please read it carefully. Click “Continue” when you are ready to continue.



4. Select a language (the default language is English) and click “Continue” to install the driver.



5. To read the software license click “Read License” and then click “Agree” to confirm you agree to the terms. You must agree to the terms to continue installing the software.



6. If prompted, select which user to install the software for and click “Continue”.



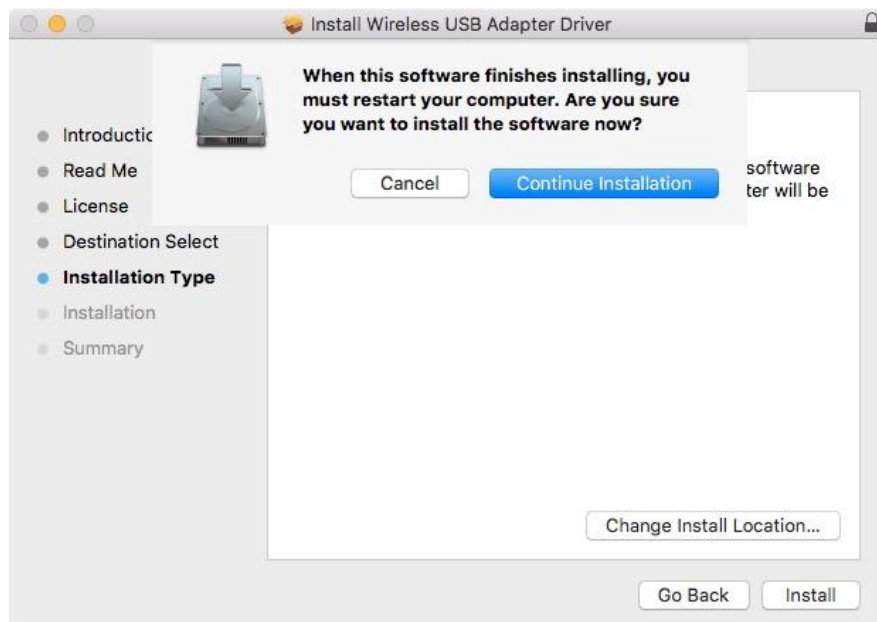
7. Click “Install” to install the driver.



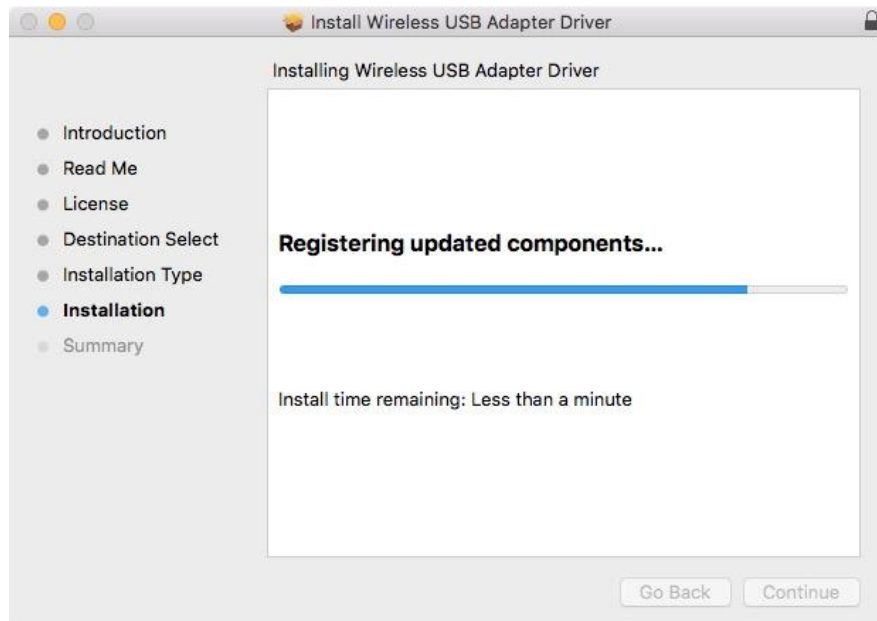
8. You may be prompted to enter your system/administrative password before the installation can begin. Enter your password and click “Install Software”.



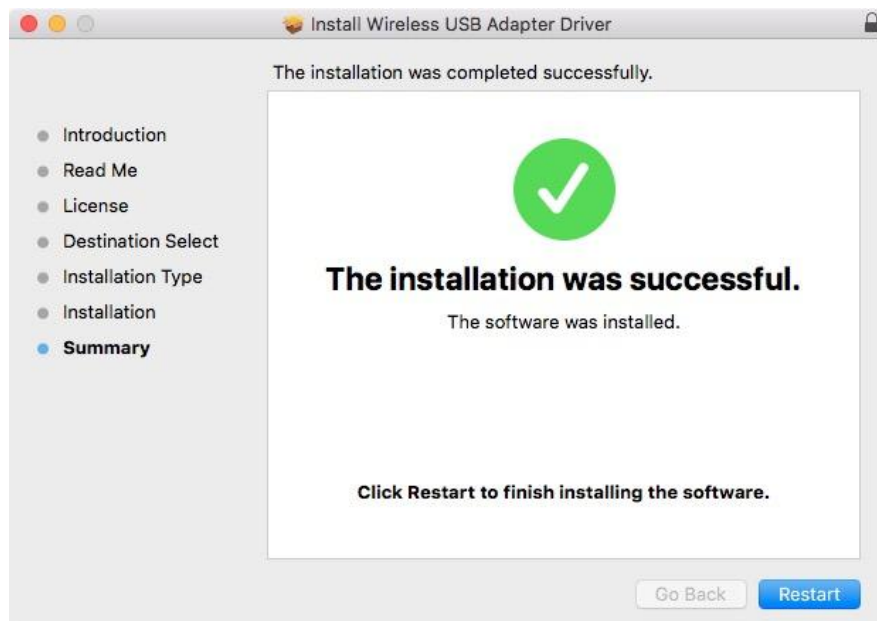
9. You will be prompted that you must restart your computer when the installation is complete. Click “Continue Installation” to proceed.



10. Please wait while the driver is installing.



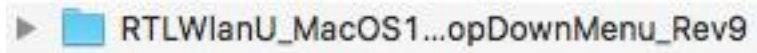
11. When the installation is complete, you will see the following screen informing you that “The installation was successful”. Click “Restart” to restart your computer.



12. Next, please disable any other wireless adapters as described in **V. Disabling Network Adapters**. Then you can connect to a Wi-Fi network as described in **VI. Using The Adapter**.

IV-2. Driver Uninstallation

1. Open the “RTLWLANU_MacOS..” folder.



2. Double click the “Uninstall.pkg” file and follow the on-screen instructions.

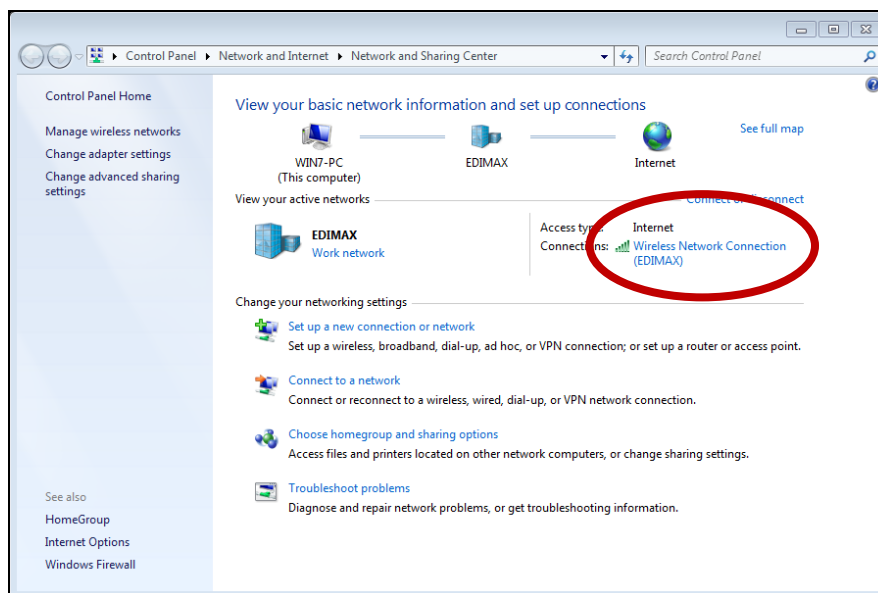


V. Disabling Network Adapters

To ensure that your USB wireless adapter can function correctly, it is recommended that you disable any other existing wireless network adapters installed on your computer. If you are unsure how to do so, you can refer to the user manual for your computer, or follow the guidance below.

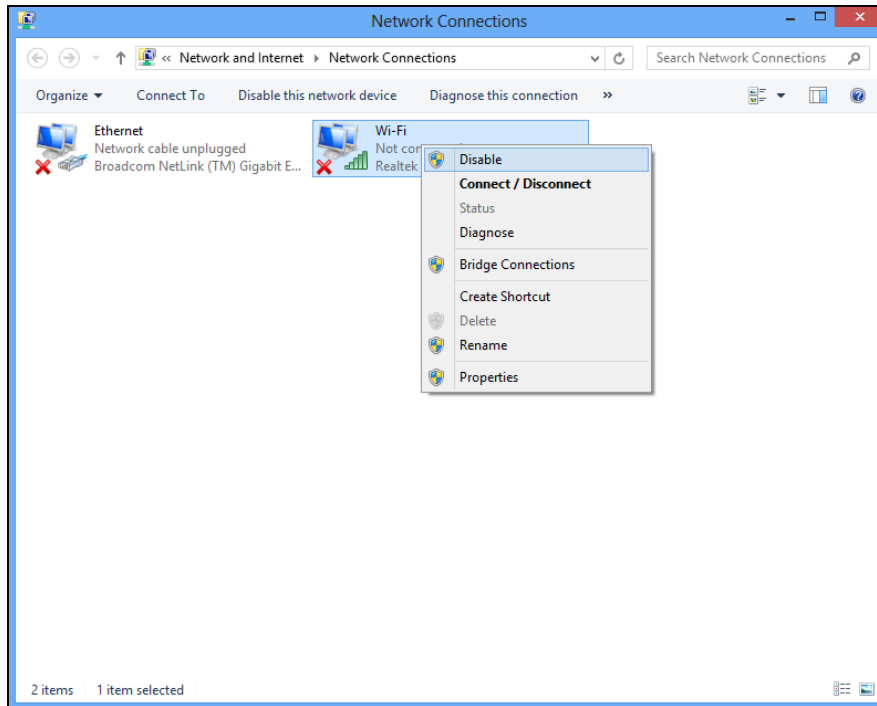
V-1. Windows 7

Go to **Start > Control Panel**. Click **View network status and tasks > Wireless Network Connection** and click **Disable**.



V-2. Windows 8.1 & 10

1. Switch to desktop mode by clicking your cursor in the bottom left of the Windows 8 Start screen. Then go to **File Explorer > (right click) Network > Properties > Change adapter settings**.
2. Right click your wireless adapter, select **“Properties”** and then **“Disable”**.

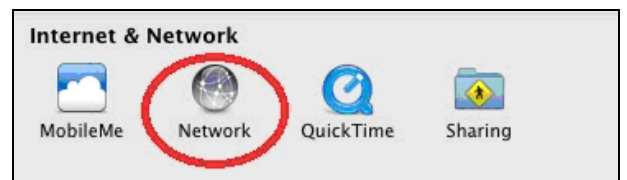


V-4. Mac

1. Select "System Preferences" from the dock.



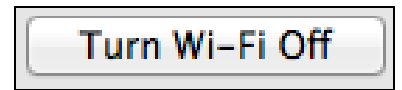
2. In "System Preferences", select "Network".



3. All of your network connections will be displayed, as shown below. Select "Wi-Fi" from the left panel.



4. Click “Turn Wi-Fi” off in the main panel.



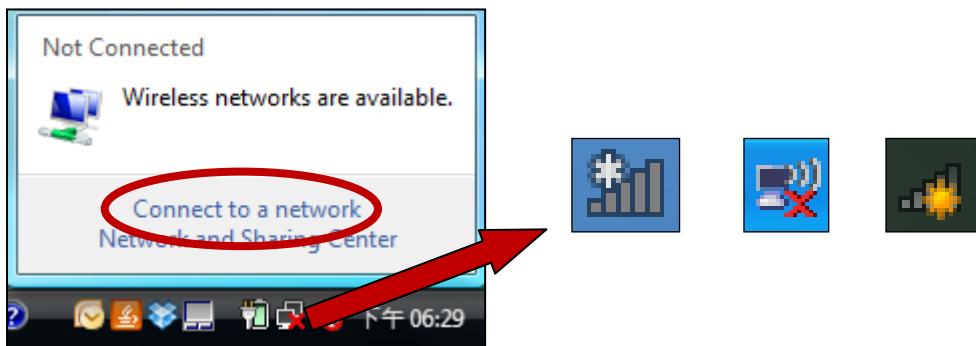
VI. Using The Adapter

After you have installed the driver and if necessary disabled other wireless adapters (see **V. Disabling Network Adapters**), Windows users can connect to a Wi-Fi network as usual (see below). Mac users need to connect to a Wi-Fi network using the included utility, as described in **VI-2. Mac**

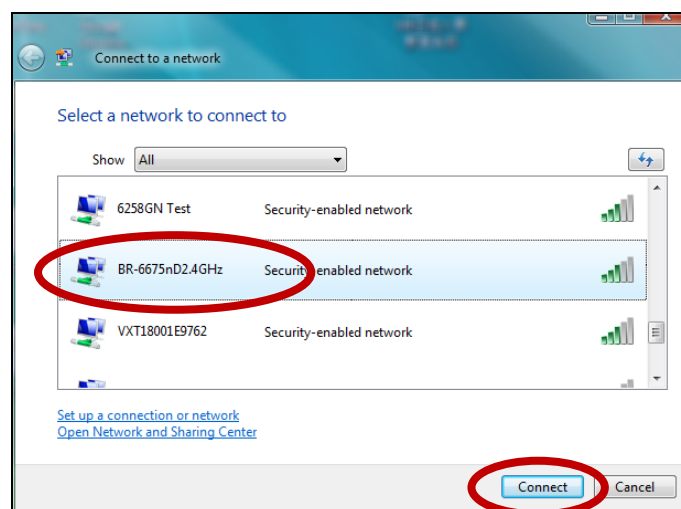
VI-1. Windows

Below is an example of how to connect - the process may vary according to your Windows edition.

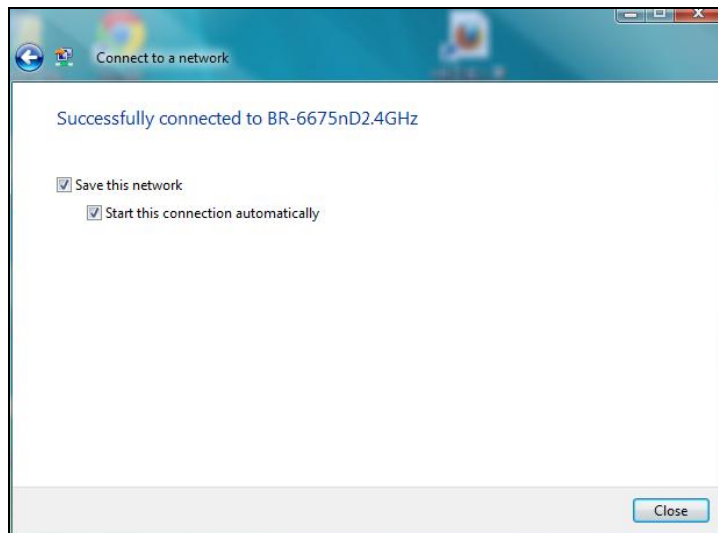
1. Click the network icon (examples below) in the system tray and select "Connect to a network".



2. Search for the SSID of your Wi-Fi network and then click "Connect". If you set a password for your network, you will then be prompted to enter it.



3. After correctly entering your password, you will be successfully connected to your Wi-Fi network.



VI-2. Mac

1. Click the new USB adapter icon from the menu in the top right of your Mac desktop.



2. Available Wi-Fi networks will be displayed. Select your Wi-Fi network as you usually would.



3. Enter the password (network key) for the Wi-Fi network and click "Join".



4. After entering your password, you will be successfully connected to your Wi-Fi network and the icon will display the Wi-Fi signal strength.



5. You can use the other items in the menu to switch your USB adapter on/off, join another network (manually enter SSID name) and or display WPS PIN.

VI-4. WPS Setup

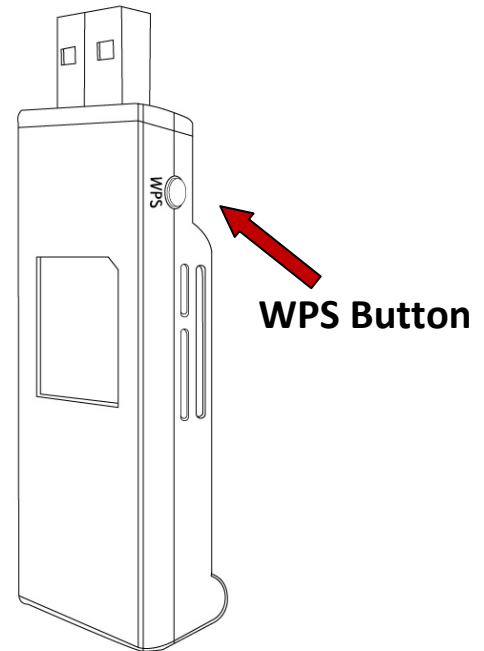
If your wireless router/access point supports Wi-Fi Protected Setup (WPS) then you can use this method to connect to a Wi-Fi network.

1. Press the WPS button (often the WPS/Reset button) on your router/access point to activate WPS.



Please check the instructions for your wireless router/access point for how long you need to hold down its WPS button to activate WPS.

2. Within two minutes, press the WPS button on the underside of the EW-7833UAC to activate its WPS.
3. The devices will establish a connection.



COPYRIGHT

Copyright © Edimax Technology Co., Ltd. all rights reserved. No part of this publication may be reproduced, transmitted, transcribed, stored in a retrieval system, or translated into any language or computer language, in any form or by any means, electronic, mechanical, magnetic, optical, chemical, manual or otherwise, without the prior written permission from Edimax Technology Co., Ltd.

Edimax Technology Co., Ltd. makes no representations or warranties, either expressed or implied, with respect to the contents hereof and specifically disclaims any warranties, merchantability, or fitness for any particular purpose. Any software described in this manual is sold or licensed as is. Should the programs prove defective following their purchase, the buyer (and not this company, its distributor, or its dealer) assumes the entire cost of all necessary servicing, repair, and any incidental or consequential damages resulting from any defect in the software. Edimax Technology Co., Ltd. reserves the right to revise this publication and to make changes from time to time in the contents hereof without the obligation to notify any person of such revision or changes.

The product you have purchased and the setup screen may appear slightly different from those shown in this QIG. The software and specifications are subject to change without notice. Please visit our website www.edimax.com for updates. All brand and product names mentioned in this manual are trademarks and/or registered trademarks of their respective holders.

Federal Communication Commission Interference Statement

This equipment has been tested and found to comply with the limits for a Class B digital device, pursuant to Part 15 of FCC Rules. These limits are designed to provide reasonable protection against harmful interference in a residential installation. This equipment generates, uses, and can radiate radio frequency energy and, if not installed and used in accordance with the instructions, may cause harmful interference to radio communications. However, there is no guarantee that interference will not occur in a particular installation. If this equipment does cause harmful interference to radio or television reception, which can be determined by turning the equipment off and on, the user is encouraged to try to correct the interference by one or more of the following measures:

1. Reorient or relocate the receiving antenna.
2. Increase the separation between the equipment and receiver.
3. Connect the equipment into an outlet on a circuit different from that to which the receiver is connected.
4. Consult the dealer or an experienced radio technician for help.

FCC Caution

This device and its antenna must not be co-located or operating in conjunction with any other antenna or transmitter. This device complies with Part 15 of the FCC Rules. Operation is subject to the following two conditions: (1) this device may not cause harmful interference, and (2) this device must accept any interference received, including interference that may cause undesired operation. Any changes or modifications not expressly approved by the party responsible for compliance could void the authority to operate equipment.

Federal Communications Commission (FCC) Radiation Exposure Statement

This equipment complies with FCC radiation exposure set forth for an uncontrolled environment. In order to avoid the possibility of exceeding the FCC radio frequency exposure limits, human proximity to the antenna shall not be less than 2.5cm (1 inch) during normal operation.

Federal Communications Commission (FCC) RF Exposure Requirements

This EUT is compliance with SAR for general population/uncontrolled exposure limits in ANSI/IEEE C95.1-1999 and had been tested in accordance with the measurement methods and procedures specified in OET Bulletin 65 Supplement C. The equipment version marketed in US is restricted to usage of the channels 1-11 only. This equipment is restricted to *indoor* use when operated in the 5.15 to 5.25 GHz frequency range.

R&TTE Compliance Statement

This equipment complies with all the requirements of DIRECTIVE 1999/5/EC OF THE EUROPEAN PARLIAMENT AND THE COUNCIL of March 9, 1999 on radio equipment and telecommunication terminal equipment and the mutual recognition of their conformity (R&TTE). The R&TTE Directive repeals and replaces in the directive 98/13/EEC (Telecommunications Terminal Equipment and Satellite Earth Station Equipment) As of April 8, 2000.

Safety

This equipment is designed with the utmost care for the safety of those who install and use it. However, special attention must be paid to the dangers of electric shock and static electricity when working with electrical equipment. All guidelines of this and of the computer manufacture must therefore be allowed at all times to ensure the safe use of the equipment.

EU Countries Intended for Use

The ETSI version of this device is intended for home and office use in Austria, Belgium, Bulgaria, Cyprus, Czech, Denmark, Estonia, Finland, France, Germany, Greece, Hungary, Ireland, Italy, Latvia, Lithuania, Luxembourg, Malta, Netherlands, Poland, Portugal, Romania, Slovakia, Slovenia, Spain, Sweden, Turkey, and United Kingdom. The ETSI version of this device is also authorized for use in EFTA member states: Iceland, Liechtenstein, Norway, and Switzerland.

EU Countries Not Intended for Use

None

EU Declaration of Conformity

- English:** This equipment is in compliance with the essential requirements and other relevant provisions of Directive 1999/5/EC, 2009/125/EC.
- Français:** Cet équipement est conforme aux exigences essentielles et autres dispositions de la directive 1999/5/CE, 2009/125/CE.
- Čeština:** Toto zařízení je v souladu se základními požadavky a ostatními příslušnými ustanoveními směrnic 1999/5/ES, 2009/125/ES.
- Polski:** Urządzenie jest zgodne z ogólnymi wymaganiami oraz szczególnymi warunkami określonymi Dyrektywą UE 1999/5/EC, 2009/125/EC.
- Română:** Acest echipament este în conformitate cu cerințele esențiale și alte prevederi relevante ale Directivei 1999/5/CE, 2009/125/CE.
- Русский:** Это оборудование соответствует основным требованиям и положениям Директивы 1999/5/EC, 2009/125/EC.
- Magyar:** Ez a berendezés megfelel az alapvető követelményeknek és más vonatkozó irányelveknek (1999/5/EK, 2009/125/EC).
- Türkçe:** Bu cihaz 1999/5/EC, 2009/125/EC direktifleri zorunlu istekler ve diğer hükümlerle ile uyumludur.
- Українська:** Обладнання відповідає вимогам і умовам директиви 1999/5/EC, 2009/125/EC.
- Slovenčina:** Toto zariadenie spĺňa základné požiadavky a ďalšie príslušné ustanovenia smerníc 1999/5/ES, 2009/125/ES.
- Deutsch:** Dieses Gerät erfüllt die Voraussetzungen gemäß den Richtlinien 1999/5/EC, 2009/125/EC.
- Español:** El presente equipo cumple los requisitos esenciales de la Directiva 1999/5/EC, 2009/125/EC.
- Italiano:** Questo apparecchio è conforme ai requisiti essenziali e alle altre disposizioni applicabili della Direttiva 1999/5/CE, 2009/125/CE.
- Nederlands:** Dit apparaat voldoet aan de essentiële eisen en andere van toepassing zijnde bepalingen van richtlijn 1999/5/EC, 2009/125/EC.
- Português:** Este equipamento cumpre os requisitos essenciais da Directiva 1999/5/EC, 2009/125/EC.
- Norsk:** Dette utstyret er i samsvar med de viktigste kravene og andre relevante regler i Direktiv 1999/5/EC, 2009/125/EC.
- Svenska:** Denna utrustning är i överensstämmelse med de väsentliga kraven och övriga relevanta bestämmelser i direktiv 1999/5/EG, 2009/125/EG.
- Dansk:** Dette udstyr er i overensstemmelse med de væsentligste krav og andre relevante forordninger i direktiv 1999/5/EC, 2009/125/EC.
- Suomi:** Tämä laite täyttää direktiivien 1999/5/EY, 2009/125/EY oleelliset vaatimukset ja muut asiaankuuluvat määräykset.

FOR USE IN



WEEE Directive & Product Disposal



At the end of its serviceable life, this product should not be treated as household or general waste. It should be handed over to the applicable collection point for the recycling of electrical and electronic equipment, or returned to the supplier for disposal.

Declaration of Conformity

We, Edimax Technology Co., Ltd., declare under our sole responsibility, that the equipment described below complies with the requirements of the European R&TTE directives.

Equipment: AC1750 Wi-Fi Dual-Band USB Adapter

Model No.: EW-7833UAC

The following European standards for essential requirements have been followed:

Directives 1999/5/EC

Spectrum : ETSI EN 300 328 V1.9.1 (2015-02)
ETSI EN 301 893 V1.8.1 (2015-03)

EMC : EN 301 489-1 V1.9.2 (2011-09)
EN 301 489-17 V2.2.1 (2012-09)

Safety (LVD) : IEC 60950-1:2005 (2nd Edition)+Am 1:2009+Am 2:2013
EN 60950-1:2006+A11:2009+A1:2010+A12:2011+A2:2013

Recommendation 99/519/EC

EMF : EN 62311:2008

Directives 2006/95/EC

Safety (LVD) : IEC 60950-1:2005 (2nd Edition)+Am 1:2009+Am 2:2013
EN 60950-1:2006+A11:2009+A1:2010+A12:2011+A2:2013

Edimax Technology Co., Ltd.
No. 3, Wu Chuan 3rd Road,
Wu-Ku Industrial Park,
New Taipei City, Taiwan



Date of Signature: June, 2016

Signature:

Printed Name:

Albert Chang

Title:

Director

Edimax Technology Co., Ltd.



EDIMAX
NETWORKING PEOPLE TOGETHER

The logo features the Greek letter sigma (Σ) as the first letter of 'EDIMAX'. A small red dot is positioned above the 'I'. The background is a dark grey band filled with various white line-art icons representing technology, networking, and human interaction, such as a handshake, musical notes, a smiley face, a game controller, and a computer monitor.