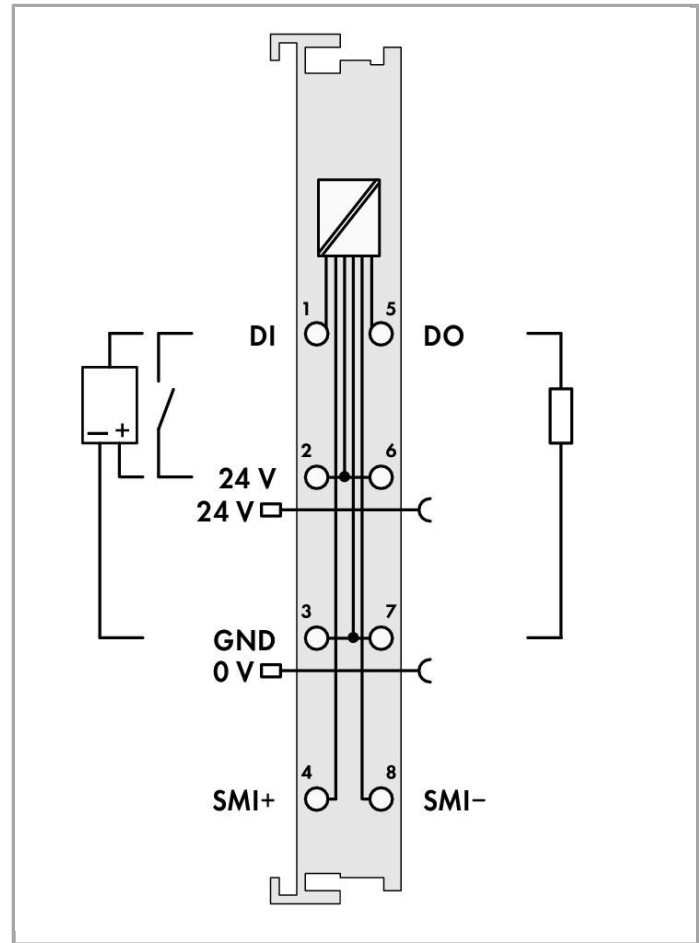
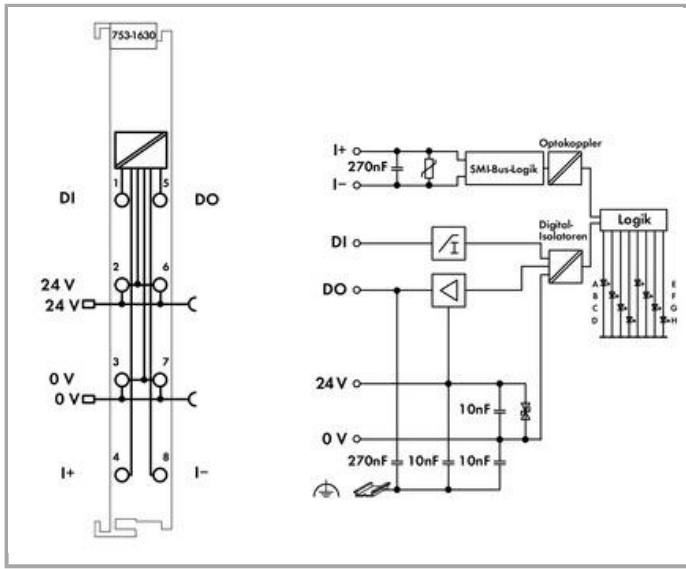


RoHS Compliant

[BOMcheck.net](http://BOMcheck.net)



### Item description

The 753-1630 SMI Master Module is a standard interface to SMI-compliant electrical drives.

The SMI master operates up to 16 SMI drives. Several SMI masters may be operated within a node.

The module supports the SMI specification (Rev 1.0) functionality.

Communication between applications and SMI drives is performed via special IEC function blocks. These function blocks support both single and group addressing, as well as status monitoring.

The SMI function blocks can be used with the 750 Series Programmable Fieldbus Controllers.

Alternatively, an "Easy Mode" allows functions to be easily controlled without any complicated PLC programming. The SMI configurator is suitable for addressing, configuring and commissioning SMI drives.

Additional Functions: The programmed commands can be overwritten by an external sensor or switch via additional digital input. The drive can be switched off by a relay via additional digital output to save energy. The drive is automatically switched on again by the output before the next drive command.

What is SMI: SMI stands for Standard Motor Interface, a standard interface for electrical drives. SMI was developed to connect drives with integrated electronic circuitry for applications in shutters and sunshade systems. SMI is a protected word/image mark of the SMI Standard Motor Interface e.V. VR995 District Court Constance.

## Data

### Technical Data

Number of digital inputs	1
Number of digital outputs	1
Number of SMI channels	1 (1 ... 16 SMI slaves per channel)
Input characteristic	Type 1
Input voltage (max.)	31.2 VDC
Output current per channel	0.5 A
Bit width	12-byte data
Commissioning	Via WAGO SMI Configurator and IEC libraries
System supply voltage	DC 5 V; via data contacts
Current consumption, system supply (5 V)	42 mA
Field supply voltage	DC 24 V (-25 ... 30 %); über Leistungskontakte (Einspeisung über Messerkontakt; Weiterleitung über Federkontakt)
Current consumption, field supply (module with no external load)	11.8 mA
Isolation	3 kVAC RMS, 4 kV surge (system/SMI); 1.5 kVAC RMS, 2.5 kV surge (system/field)
Number of incoming power jumper contacts	2
Number of outgoing power jumper contacts	2

### Connection data

Connection technology: In-/Outputs	8 x CAGE CLAMP®
Connection type (1)	Inputs/Outputs
Solid conductor	0.08 ... 2.5 mm <sup>2</sup> / 28 ... 14 AWG
Fine-stranded conductor	0.08 ... 2.5 mm <sup>2</sup> / 28 ... 14 AWG
Strip length	8 ... 9 mm / 0.31 ... 0.35 Inch
Anschlussanforderung zulässige Leitungslänge	350 m
Connection requirement (permissible cable type)	2-line, unshielded

### Geometrical Data

Width	12 mm / 0.472 inch
Height	69.8 mm / 2.748 inch
Height from upper-edge of DIN-35 rail	62.6 mm / 2.465 inch
Depth	100 mm / 3.937 inch

### Mechanical data

Type of mounting	DIN-35 rail
Pluggable connector	yes

## Material Data

Housing material	Polycarbonate, polyamide 6.6
Weight	71.2 g
Conformity marking	CE

## Environmental Requirements

Surrounding air (operating) temperature	0 ... 55 °C
Surrounding air (storage) temperature	-40 ... 85 °C
Degree of protection	IP20
Degree of pollution (5)	2 per IEC 61131-2
Operating altitude	0 ... 2000 m
Mounting position	horizontal (standing/lying) or vertical
Relative air humidity (no condensation)	95 %
Vibration resistance	acc. to IEC 60068-2-6
Shock resistance	15g per IEC 60068-2-27
Exposure to pollutants	Per IEC 60068-2-42 and IEC 60068-2-43
Permissible H <sub>2</sub> S contaminant concentration at a relative humidity < 75 %	10 ppm
Permissible SO <sub>2</sub> contaminant concentration at a relative humidity < 75 %	25 ppm

## Approvals / Certificates

### Country specific Approvals

Logo	Approval	Certificate name
	KC National Radio Research Agency	MSIP-REM-W43-MCM750



## Product family

**750/753 Series I/O-System**

[Show all products from the family](#)

Subject to changes.

---

WAGO Kontakttechnik GmbH & Co. KG

Hansastr. 27

32423 Minden

Phone: +49571 887-0 | Fax: +49571 887-169

Email: [info.de@wago.com](mailto:info.de@wago.com) | Web: [www.wago.com](http://www.wago.com)

Do you have any questions about our products?

We are always happy to take your call at 01788 568 008.