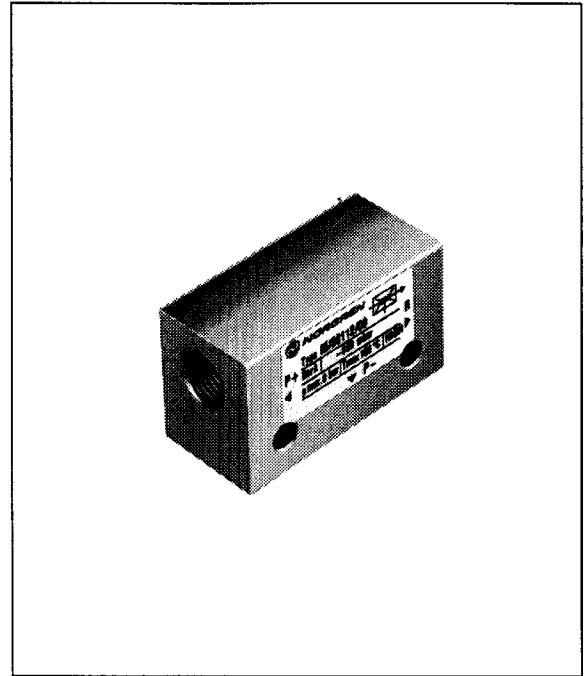


Vacuum Pumps
- 0,85 or - 0,90 bar

- **Compact dimensions**
- **Compressed air driven**
- **Low sound level**
- **Easy installation**



Technical Data

Medium:

Compressed air, filtered and non-lubricated

Operation:

Single stage ejector

Operating Pressure:

5 bar optimum

8 bar maximum

Vacuum:

- 0,85 bar maximum M/58112/09

- 0,90 bar maximum M/58112/11

Operating Temperature:

-20°C* to +150°C

*Consult our Technical Service for use below +2°C

Sound Level:

66/74 dB (A) vacuum port closed/ open M/58112/09

71/82 dB (A) vacuum port closed/ open M/58112/11

Materials:

Housing: Anodised aluminium

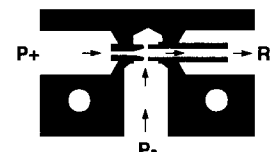
Nozzles: Brass

Ordering Example

To order a vacuum pump -0,90 bar vacuum
 quote: M/58112/11

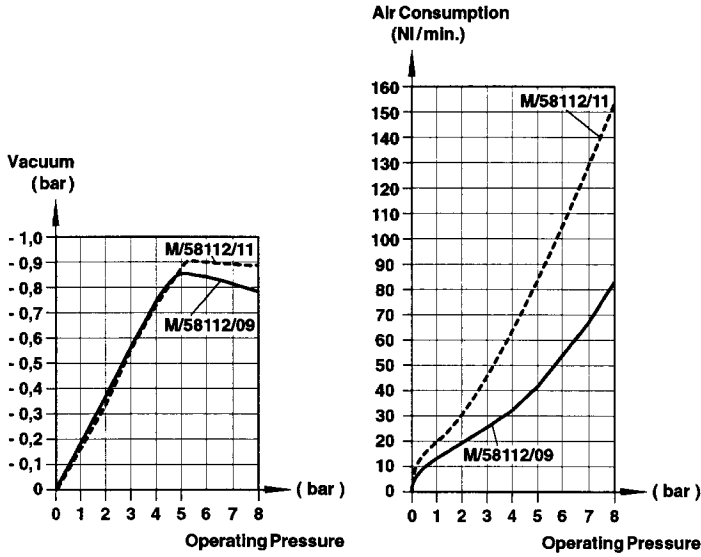
Accessories

	See page
Pneumatic vacuum switch	N 4.3.101.01
Electric vacuum switch	N 4.3.111.01
Electronic vacuum switch	N 4.3.121.01
Flat suction cups	N 3.5.011.01
Bellows suction cups	N 3.5.031.01
Vacuum gauge	N 3.4.015.03





Characteristics (All values given apply to an atmospheric pressure of 1013 mbar)



Induced air (NI/min), free air

Model	0	-0,1	-0,2	-0,3	-0,4	-0,5	-0,6	-0,7	-0,8
M/58112/09	28	24	18	14	11	8	5,5	3	1
M/58112/11	55	47	36	28	23	17	12	6	2,5

Time (sec) for evacuation of 1 litre volume to vacuum

Model	-0,1	-0,2	-0,3	-0,4	-0,5	-0,6	-0,7	-0,8	0,85	0,9
M/58112/09	0,27	0,56	0,89	1,44	2,00	2,88	4,31	7,97	14,36	—
M/58112/11	0,15	0,31	0,49	0,72	1,00	1,41	2,08	3,71	5,60	8,11

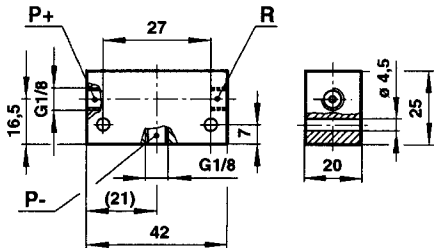
Note: Values given in the tables are theoretical and apply to an operating pressure of 5 bar

Tube Dimensions
Recommended tube dimensions
(internal diameter)

Model	Compressed air	Vacuum	Exhaust
M/58112/09	≥ Ø 3	≥ Ø 6	≥ Ø 6
M/58112/11	≥ Ø 3	≥ Ø 7	≥ Ø 9

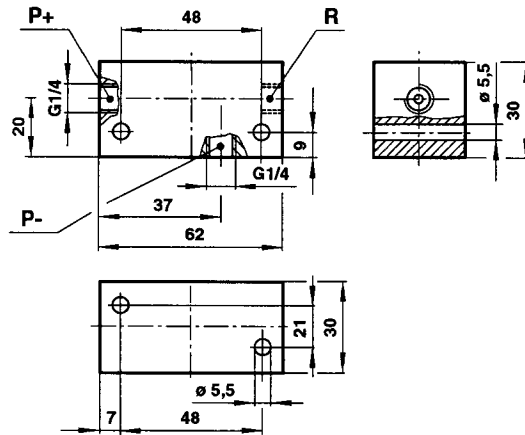
Basic Dimensions

M/58112/09



Model	Weight (kg)
M/58112/09	0,054
M/58112/11	0,157

M/58112/11



Warning

These products are intended for use in industrial compressed air systems only. Do not use these products where pressures and temperatures can exceed those listed under 'Technical Data'.

Before using these products with fluids other than those specified, for non-industrial applications, life-support systems, or other applications not within published specifications, consult NORGREN.

Through misuse, age, or malfunction, components used in fluid power systems can fail in various modes.

The system designer is warned to consider the failure modes of all component parts used in fluid power systems and to provide adequate safeguards to prevent personal injury or damage to equipment in the event of such failure.

System designers must provide a warning to end users in the system instructional manual if protection against a failure mode cannot be adequately provided.

System designers and end users are cautioned to review specific warnings found in instruction sheets packed and shipped with these products.

Necessary safety requirements when using Norgren products

1 General Information

- Pneumatics has a variety of advantages over other control and driving systems. When being used however, general design guidelines and specific regulations for machines and equipment relating to pneumatics, (e.g. those complying to DIN 24558, pneumatic equipment) as well as general safety regulations must be complied with.
- When using Norgren products the specifications applicable in each case must be observed, as for example:
 - all necessary Accident Prevention Regulations
 - all the relevant VDI guidelines (in particular VDI 2853 and VDI 3229)
 - all the guidelines, safety regulations and instruction leaflets concerned
 - the relevant DIN standards (e.g. DIN 31000 and DIN 31001)
 - instructions for installation and maintenance for Norgren pneumatic equipment and controls (which are obtainable from Norgren)
 - EG "Machines" guidelines (particularly in the area of fluid technology)
 - "General Safety Requirements of Fluid Technology Systems and Components" (CEN Document)
- The products may not be used outside the specified "Technical Parameters" (e.g. pressure and temperature).
- The consequences of a breakdown of a product, e.g., through incorrect operating procedures, ageing or malfunction, should be taken into consideration.
- System designers and the subsequent operators must follow the existing operating guidelines and strictly adhere to the installation and operating instructions.
- System designers must make the end-users aware in the User Instructions that adequate safety measures are to be taken in order to protect people and equipment.
- Norgren must be consulted before using the product with fluids other than those specified, for non-industrial applications, life support systems and other applications outside the published specification list.
- In order to avoid unrestricted movements of equipment components where no displacement limiters are provided, supplementary means must be made available and used.
- Unclean and incorrectly oiled compressed air will shorten the life-span of the pneumatic components.
- Variations in compressed air can lead to irregular functioning of the pneumatic components and hence of the production equipment.
- Improper fitting and improper handling of compressed air appliances can lead to premature failure and can be dangerous.



2 Cylinders

- The displacement range of the cylinders, pistons and all the other associated actuators must be safeguarded against to protect the equipment. (Recommended guidelines VDI 2853 or DIN 31001)

2.1 Single acting cylinders with spring return

- Dismantling of the cylinders should be carried out with the utmost care as the cylinder is pre-stressed by means of the mechanical spring.

2.2 Bellow cylinders

- Pneumatic bellow cylinders must not be used outside specified operating parameters.
- To avoid overstretching or excessive movement of the bellows, external stops must be provided.
- A contact-free stroke movement of the bellows with respect to neighbouring components is essential.
- The pneumatic bellow cylinders must not be supplied with compressed air if the edge of the bellows is not completely encapsulated by the end-plates.
- If only two of the four fastening bolts are used, the end-plates must be additionally supported.

2.3 Impact cylinders

- Due to the high kinetic energy content in the impact cylinder, precautionary measures must be taken.
- Impact cylinders may only be operated when adequately safeguarded.

3 Air valves

- Air valves can have an undefined switching position when switching on equipment. Therefore it is possible that the equipment makes an uncontrolled sudden movement. Care should therefore be taken when switching on equipment.

3.1 5/3 wax valves and non-return valves

- When using 5/3-way valves with closed centre position or non-return valves in pneumatic control systems and plants it is to be noted that certain areas of such systems and plants may remain under pressure after they have been shut off and vented. The utmost care should therefore be exercised when carrying out repair work.
- The areas of the system which remain under pressure after being shut off and vented are to be provided with special markings (e.g. "pressure line") in circuit diagrams. It is also highly advisable to provide these circuit diagrams with a special text, e.g.: "WARNING! Due care is to be exercised during repair work to areas marked "pressure line" in this system."

4 Air line equipment

- When designing and installing the airfilter appliances make sure that filters are always installed before regulators and lubricators.
- The lubricators of the Olympian series are not suitable for use in "Mistcool" mist coolant systems or lubricating systems for machines (bearings, gears etc.). They are neither suitable as mist lubricators on the output side, nor for operation at full power in reversed flow direction.
- A list of recommended lubricants is available. For certain applications it is, however, more advisable to use only those lubricants which the particular manufacturer produces and specifies for the machines, equipment etc.. Lubricants containing soap or bulk adding agents are not recommended.
- Do not use non-inflammable phosphate-ester-based compressor oils as this causes damage to O-rings, seals and other parts of the Norgren equipment and pneumatics installations.
- Clean the plastic containers of the filters, filter regulators and lubricators with soapy water only. On no account should solvents be used as these destroy the containers.
- Filters designed for manual drainage must be drained regularly, before the fluid reaches the membrane.

To remove the filter element, shut off the compressed air supply (decrease the pressure level in the device - not necessary when a drainage shut-off valve is installed).
- Shut off the compressed air supply prior to replenishing the oil of a micro-mist oiler. It is advisable to install a vent valve up-line of the filter, to enable venting prior to replenishing the oil.

Installation and maintenance instructions for Norgren pneumatic products

Care should always be taken during installation of pneumatic cylinders and valves to ensure that they are fitted in such a manner that they are protected against dirt, water or other contamination as well as against mechanical damage. The environmental temperature for normal cylinders should not exceed 80°C and the same applies to normal valves. Cylinders fitted with heat resistant seals may be used for temperatures up about 150°C.

Installation of the cylinders

In order to prevent premature wear of the seals and piston rod bearings, the cylinders must be carefully aligned during installation. It is absolutely imperative that there should be no forces acting at right angles to the cylinder axis. A wiper is fitted in the bearing to prevent dirt penetrating into the cylinder. If a cylinder is employed in a dirty environment (cement dust, residues from lame-cutting operations etc.) it is advisable to provide special protection for the piston rod (a bellows sleeve may be used). Every cylinder is authorized for a certain maximum working pressure which may not be exceeded.

Adjustable cushions are fitted in both ends of the cylinders. When installing a cylinder care should be taken to ensure that the cushion adjusting screws remain easily accessible, so that the cushions can be adjusted at any time to suit the working conditions.

Installation of valves

Main control valves, i. e. valves which control reversal of cylinders, should be installed as close to the cylinders as possible in order to eliminate unnecessary air consumption. Under no circumstances valves serving as limit switches may be used as stops.

Routing of pipework

Pipework in the main supply network in the plant should be installed at a slightly inclined angle. Long runs should be alternately inclined downwards and upwards. Any condensate water then collects at the lowest points in the pipework. At such points a pipe should be fitted leading vertically downwards to a small condensate receiver. The latter should be emptied from time to time. An automatic drain valve will do this automatically if fitted in place of a condensate receiver. Branches leading from the main line to consumption points should be installed pointing vertically upwards and the curving downwards. Do not use bends of too small a radius. Carefully blow out all pipes before installing them, so as to remove any dirt and chips. Do not use hemp for making seals! Liquid sealing agents or, still better, sealing tape (Fluflex or Diring) ensure that contamination, such as fibres when hemp is used, does not get into the pipework.

Maintenance

As a rule Norgren cylinders and valves require hardly any maintenance. All seals (o-rings and packing-rings) are made of synthetic, oil-resistant rubber. However, the condition of the compressed air determines the life of installation. For this reason the air used should be treated so that it is suitable for the purpose in the interests of long life. Clean air, free of water and containing oil fog, ensures long service life for the equipment. A filter with water separator incorporated in the line removes small particles from the air and separates out water. The condensate collects in a receiver mounted on the filter and should be drained off from time to time. If an automatic drain valve is mounted on the filter it is absolutely certain that it will not be forgotten to drain off the condensate. The cleaned air now has to have oil added to it. Every engineer knows that sliding parts have to be lubricated and therefore provides lubrication for bearings and other moving parts. In a cylinder, too, the piston and piston rod slide, and the slides in the valves also move. It is very often not considered necessary to lubricate such parts - and then the penalty is paid in the form of premature wear of packings and bearing. In order to lubricate a pneumatic control system properly a lubricator is installed in the air line; this lubricator saturates the compressed air with a fine fog of oil droplets. These droplets remain suspended in the air and are carried to the lubricating points in the cylinders and valves. The size of lubricator selected depends on the volume of air flowing through the line and NOT on the consumption. One must differentiate between consumption per unit time and the rate of flow per unit of time.

And now an example

Lubricators have a wide flow range, but care must still be taken to match the size of lubricator to air flow, and it is important to distinguish between consumption and air flow. Thus if a circuit consumes 5 cubic feet of air per cycle and this cycle occupies 10 seconds and occurs once every two minutes, the average consumption is 2 1/2 cfm but the rate of flow is 30 cfm when calculating the capacity of lubricator required.

We recommend the following grades of oil for use in the oilers:

Shell Oil	Tellus C 32
Aral Oil	Vitam DE 32
BP Oil	Energol HLP 32
Esso Oil	Nuto H 32
Mobil Oil	D.T.E. Oil Light

or corresponding oils of other makes.

The micro-lubricators are suitable for oils with a viscosity from 20 to 200 cSt at an operating temperature of 20°C. Lighter oils should not be used, as in most cases these cause an excess of Lubrication.