

Momentary Pushbutton Switches



DESCRIPTION

A range of IP67 rated, momentary action, low cost, push-to-make switches, designed for panel mounting. They come complete with a chrome plated locking nut and o-ring seal and are available in a variety of button colours. The pushbuttons are IP67 (front of panel) rated.

DISTINCTIVE FEATURES

- IP67 Rated
- Max. switching current 2A DC
- Switching voltage 36V DC
- Momentary, non-latching operation Off/(On)
- Panel cut-out 12mm
- Solder terminals
- Square actuator
- Supplied with chrome plated locking nut

APPLICATIONS

Suitable for a wide range of applications including industrial machinery and control panels, prototyping, product design, and education projects.

IP67

2A
DC

36V
DC

Ø
12mm

SPST

NO





ELECTRICAL SPECIFICATION

Switching DC Current Rating	2A
Switching DC Voltage Rating	36V
Contact resistance	$\leq 50\text{m}\Omega$
Insulation resistance	$\geq 1000\text{M}\Omega$
Dielectric strength	1500V rms 50Hz, 1 minute

GENERAL SPECIFICATION

Size	17.5 x 17.5mm
Type	Push-button panel mount switch
Button Style	Dome
Operation	Momentary
Contacts	SPST
Operating force (max)	3.5N
Operating Travel	2mm
Mechanical Life	1,000,000 Cycles
Electrical Life (@ Rated Load)	200,000 Cycles
Panel Thickness	4mm
Panel Cutout	$\varnothing 12\text{mm}$
Torque	0.3Nm



MATERIALS

Housing	Black anodised Zinc-Aluminium alloy
Button	PBT
Base	PA
Contact	Silver Alloy
Nut	Steel – chrome plated



ENVIRONMENTAL/OPERATING SPECIFICATION

Operational temperature	–25°C to + 55°C
Electrical life	200,000 cycles
Mechanical life	50,000 make & break cycles
Operating force	550 gf +/- 100
ABS temperature resistance	up to 175 +/- 50
IP Rating	IP67 (front of panel)
Hand soldering	Use 60 watt soldering iron for ≤3 seconds



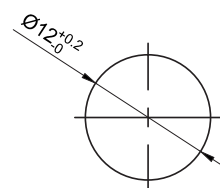
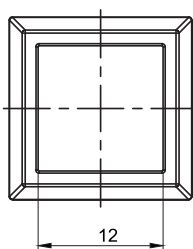
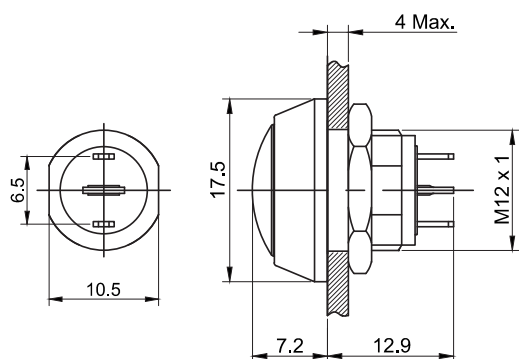
TERMINALS

Terminal type	Solder tags
Terminal size	2.0 x 0.5mm
Terminal pitch	6.5mm

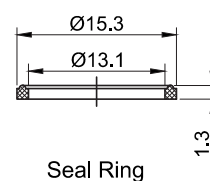


DIMENSIONS/DRAWINGS

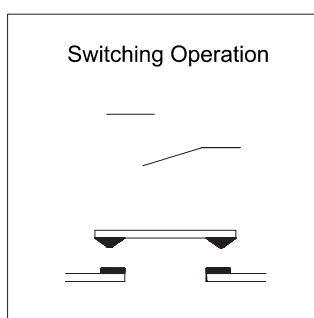
Units	mm - unless stated otherwise
Dimensions	17.5 x 17.5 x 20.1
Panel cut out diameter	12 +0.2, -0.0
Maximum panel thickness	4
Nominal Weight (grams)	2.2



PANEL CUTOUT
MAX.PANEL THICKNESS
4 mm



Seal Ring





PART NUMBER TABLE

Part Number	Actuator Colour	UNSPSC	EAN	Country Of Origin
52-4640	Green	39122224	5053556019052	China
52-4641	Red	39122224	5053556019069	China
52-4642	Black	39122224	5053556019076	China
52-4643	Blue	39122224	5053556019083	China



Important Notice: This data sheet and its contents (the "Information") belong to Rapid Electronics Limited or are licensed to it. No licence is granted for the use of it other than for information purposes in connection with the products to which it relates. No licence of any intellectual property rights is granted. The Information is subject to change without notice and replaces all data sheets previously supplied. The Information supplied is believed to be accurate but Rapid Electronics Limited assumes no responsibility for its accuracy or completeness, any error in or omission from it or for any use made of it. Users of this data sheet should check for themselves the Information and the suitability of the products for their purpose and not make any assumptions based on information included or omitted. Liability for loss or damage resulting from any reliance on the Information or use of it (including liability resulting from negligence or where Rapid Electronics Limited were aware of the possibility of such loss or damage arising) is excluded. This will not operate to limit or restrict Rapid Electronics Limited's liability for death or personal injury resulting from its negligence.