

## 5x20mm Ceramic Fast Acting Cartridge Fuses



### DESCRIPTION

Fast acting 5x20mm ceramic fuses with high breaking capacity for use in electrical circuits. Suitable for use in a wide variety of applications. Constructed with a ceramic tube and electro-plated brass end caps. These fuses offer excellent quality and are tested for cold resistance and precise length.

### DISTINCTIVE FEATURES

- 5x20mm size
- Ceramic tube
- Nickel-plated brass end caps
- Time Lag
- High breaking capacity
- UL approved

### APPLICATIONS

These fast acting R-TECH 5 x 20mm fuses are used to provide safety protection within an electrical circuit. With their high breaking capacity, these fuses are ideal for providing supplementary protection against harmful over-currents in electrical appliances and equipment and protection for components and circuits.

5 x  
20mm

Ceramic

Fast Acting

250V

UL



## ELECTRICAL SPECIFICATION

Compliant to	IEC 60127-7 and UL248-14
Rated Voltage	250VAC
Rated Current	see table below
Voltage Drop (Max.)	see table below
Rated Power	see table below
IEC Acceptance (See derating curves)	See graph
Protection Class	Suitable for appliances with protection class 1 or 2 acc. to IEC 61140
Contact Resistance (typical cold)	see table below
Nominal Melting I <sup>2</sup> T (A <sup>2</sup> sec)	see table below

### Electrical Characteristics at 25°C

Amp Code	Rated Current	Rated Voltage	Nominal Melting I <sup>2</sup> t (A <sup>2</sup> sec)	Typical cold Resistance (mΩ)	Breaking Capacity	Approvals			
						CCC	CQC	cURus	TUV
0200	200mA	250V AC 300V AC	0.010	14050	1500A@250V AC 1500A@300V AC	○	○	●	○
0250	250mA		0.021	12500		●	○	●	○
0315	315mA		0.016	7120		○	○	●	○
0400	400mA		0.040	4220		○	○	●	○
0500	500mA		0.130	458		●	○	●	●
0630	630mA		0.100	409		○	○	●	●
0750	750mA		0.480	264		○	○	●	●
0800	800mA		0.630	229		○	○	●	●
1100	1.00A		0.830	223		●	○	●	●
1125	1.25A		0.580	180		●	○	●	●
1160	1.60A		1.230	120		●	○	●	●
1200	2.00A		1.800	93.9		●	○	●	●
1250	2.50A		3.630	55.0		●	○	●	●
1315	3.15A		8.930	34.0		●	○	●	●
1400	4.00A		11.36	33.0		●	○	●	●
1500	5.00A		23.92	20.0		●	○	●	●
1630	6.30A		39.53	15.0		●	○	●	●
1800	8.00A		64.00	13.9		●	○	●	●
2100	10.00A		140.0	9.80		●	○	●	●
2120	12.00A		187.2	8.20		○	○	●	●
2125	12.50A		218.8	7.40		○	●	●	●
2150	15.00A		303.8	6.45		○	○	●	●
2160	16.00A		435.2	5.35		○	●	●	●
2200	20.00A	250V AC 300V AC	700.0	4.25	750A@250VAC	○	●	●	●
2250	25.00A		1458.33	3.25	750A@300VAC	○	○	●	●

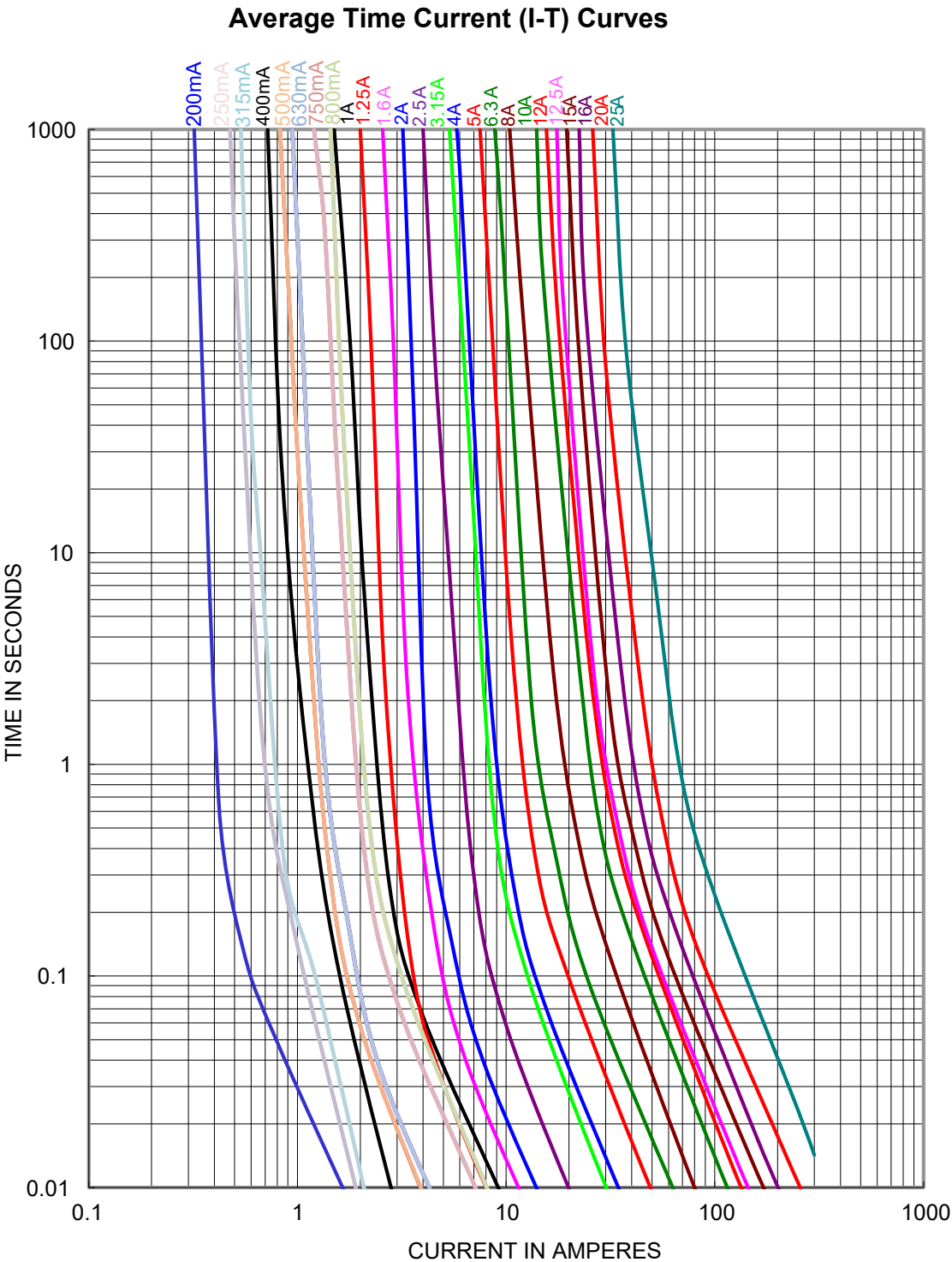
Notes: (1) Permissible continuous operating current is ≤100% at ambient temperature of 23°C (73.4°F)

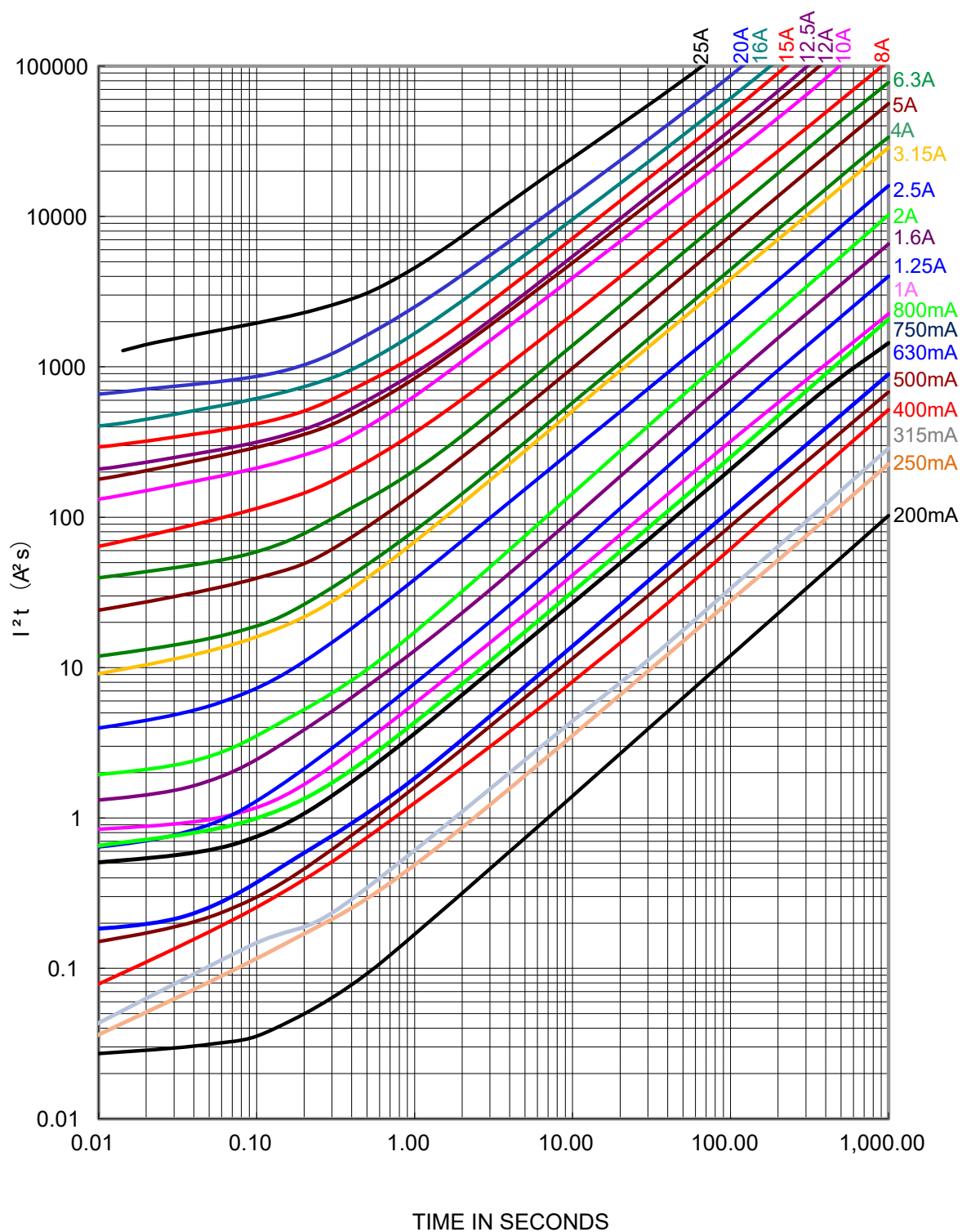
(2) Typical pre-arcing I<sup>2</sup>t are measured at 10In current.

Time vs Current Characteristics Table (measured with constant curent power supply)

Time vs Current Characteristics: UL 248-14					
Rated Current	100%	210%	275%	400%	1000%
100mA~25A	>1h	<30min	40ms~20s	10ms~1s	≤30ms

Average Time Current (I-T) Curves







## GENERAL SPECIFICATION

Series	Fuses
Type	Ceramic, cartridge
Fuse Action	Fast Acting
Compatible Fuse Size (Diameter x Length)	5 x 20mm
Mounting Type	Fuse holder
Product Marking	Type, current, voltage, approvals



## MATERIALS

Body	Ceramic tube
End cap	Brass, nickel-plated



## ENVIRONMENTAL/OPERATING SPECIFICATION

Operating Temperature	-55°C to 125°C
Storage Temperature	10°C to 60°C
Storage RH	Max. 75% r.h
*Soldering Methods	Wave or Hand Soldering
*Solderability	260°C - 10sec acc. to IEC 60068-20
*Resistance to Soldering Heat	260°C/5sec (Wave soldering) 350°C/3sec (Hand soldering)
Vibration Resistance	120 cycles in 1 direction at 1min. each 10-55Hz, in X,Y,Z directions total acc. to MIL-STD-202, method 201A
RoHS	Yes
Lead-free	Yes
Halogen-free	Yes
<b>Note:</b> *Refers to lead cap types.	



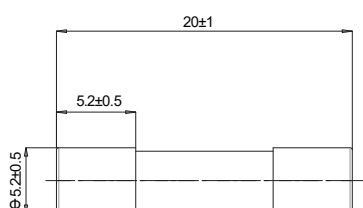
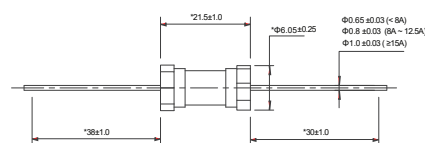
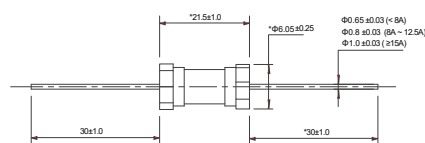
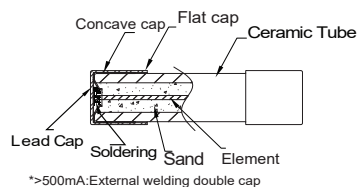
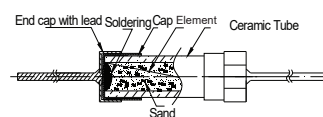
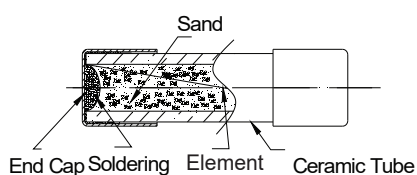
## CERTIFICATION AND STANDARDS

Approvals - UL	UL248-14
Approvals - CE	-
Approvals - cURus	E300003
Approvals - CCC	2021980401000257
Approvals - CQC	CQC21012296680
Standards - IEC	IEC 60127-7



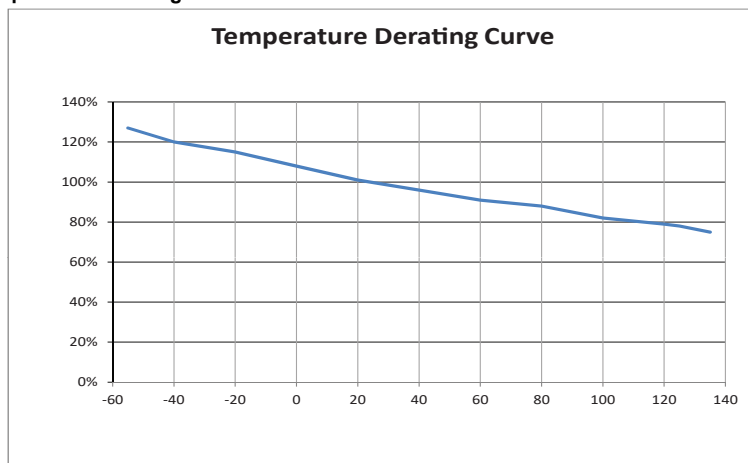
## DIMENSIONS/DRAWINGS

Units	mm - unless stated otherwise
Dimensions (Summary)	20 x ø5mm
Length	20mm
Diameter	ø5mm
Weight	1.193g



Measurements are in mm  
unless stated otherwise.

Temperature Derating Curve



Calculation for ideal fuse selection =  $\frac{\text{Operating Current (A)}}{\text{Rating (\% \times 0.75)}}$

Soldering Parameters

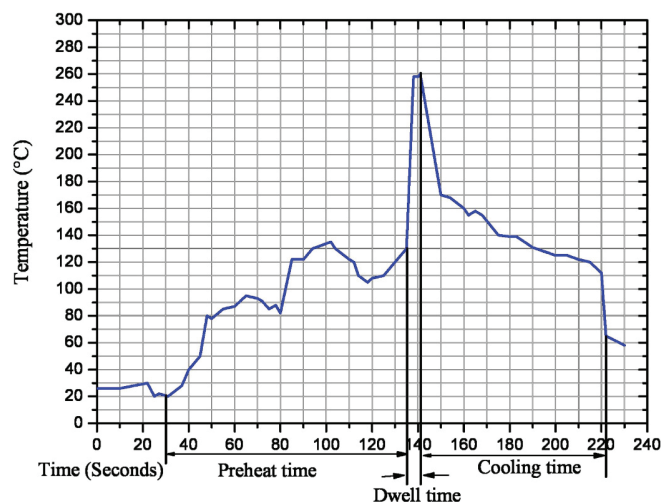
\*260°C ≤ 5 sec. (Wave Soldering)

\*350°C ≤ 3 sec. (Hand Soldering)

\*Soldering Peak:

260°C - 10 sec. (IEC 60068-20)

**Note:** \*Refers to lead cap types



**OPTIONS** (MOQ may apply)

Also available with leads:	Octagonal cap, diameter: 6.05mm



## PART NUMBER TABLE

Part Number Table	Current Rating	UNSPSC	EAN	Country of Origin
<b>26-1386</b>	200mA	39121607	5053556012848	China
<b>26-1387</b>	250mA	39121607	5053556012855	China
<b>26-1388</b>	315mA	39121607	5053556012862	China
<b>26-1389</b>	400mA	39121607	5053556012879	China
<b>26-1390</b>	500mA	39121607	5053556012886	China
<b>26-1391</b>	630mA	39121607	5053556012893	China
<b>26-1392</b>	800mA	39121607	5053556012909	China
<b>26-1393</b>	1A	39121607	5053556012916	China
<b>26-1394</b>	1.25A	39121607	5053556012923	China
<b>26-1395</b>	1.6A	39121607	5053556012930	China
<b>26-1396</b>	2A	39121607	5053556012947	China
<b>26-1397</b>	2.5A	39121607	5053556012954	China
<b>26-1398</b>	3.15A	39121607	5053556012961	China
<b>26-1399</b>	4A	39121607	5053556012978	China
<b>26-1400</b>	5A	39121607	5053556012985	China
<b>26-1401</b>	6.3A	39121607	5053556012992	China
<b>26-1402</b>	8A	39121607	5053556013005	China
<b>26-1403</b>	10A	39121607	5053556013012	China
<b>26-1404</b>	12A	39121607	5053556013029	China
<b>26-1405</b>	12.5A	39121607	5053556013036	China
<b>26-1406</b>	15A	39121607	5053556013043	China
<b>26-1407</b>	16A	39121607	5053556013050	China
<b>26-1408</b>	20A	39121607	5053556013067	China
<b>26-1409</b>	25A	39121607	5053556013074	China



Tried & trusted technology

**Important Notice:** This data sheet and its contents (the "Information") belong to Rapid Electronics Limited or are licensed to it. No licence is granted for the use of it other than for information purposes in connection with the products to which it relates. No licence of any intellectual property rights is granted. The Information is subject to change without notice and replaces all data sheets previously supplied. The Information supplied is believed to be accurate but Rapid Electronics Limited assumes no responsibility for its accuracy or completeness, any error in or omission from it or for any use made of it. Users of this data sheet should check for themselves the Information and the suitability of the products for their purpose and not make any assumptions based on information included or omitted. Liability for loss or damage resulting from any reliance on the Information or use of it (including liability resulting from negligence or where Rapid Electronics Limited were aware of the possibility of such loss or damage arising) is excluded. This will not operate to limit or restrict Rapid Electronics Limited's liability for death or personal injury resulting from its negligence.