

PCB power relays

Order code	Manufacturer code	Description
60-4620	n/a	GZ-SS-112L 12V 16A SPDT RELAY
60-4622	n/a	G2-SS-124L 24V 16A SPDT RELAY

PCB power relays	Page 1 of 3
The enclosed information is believed to be correct, Information may change 'without notice' due to product improvement. Users should ensure that the product is suitable for their use. E. & O. E.	Revision A 04/07/2003

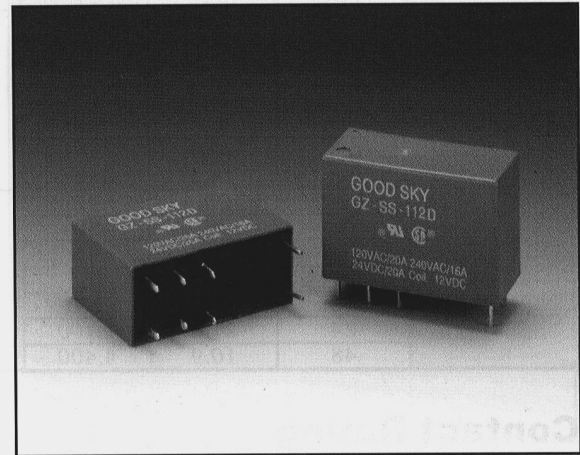
GZ/GZT

Main Features

1. Smaller size with 16A switching capacity is designed for high density P.C. Board mounting technique.
2. 8mm creepage distance. Surge resistance of 10000V and dielectric strength of 5000VAC is available.
3. High sensitive type for low consumption is available.
4. Selection of Case Material is for high temperature and better chemical solution performance.

Application

Cooking appliances, air conditioners equipment, etc.

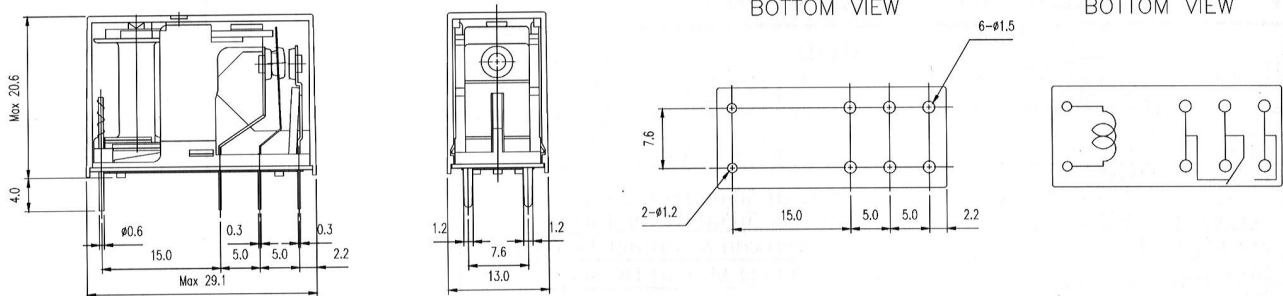


Classification

Contact Capacity	Standard Type		High Sensitivity Type	
Contact Form	1a (SPST)	1c (SPDT)	1a (SPST)	1c (SPDT)
Flow Solder Type	GZ/GZT-SS-1□□DM	GZ-SS-1□□D	GZ/GZT-SS-1□□LM	GZ-SS-1□□L
Plastic Sealed Type	GZ/GZT-SH-1□□DM	GZ-SH-1□□D	GZ/GZT-SH-1□□LM	GZ-SH-1□□L

Outline (unit: mm)

GZ/GZT-SS/SH



Coil Specification (at 20°C)

Coil Sensitivity	Nominal Voltage (VDC)	Nominal Current (mA)	Coil Resistance ($\Omega \pm 10\%$)	Power Consumption (W)	Pull-In Voltage (VDC)	Drop-Out Voltage (VDC)	Maximum Allowable Voltage (VDC)
GZ-D/DM GZT-DM	3	240	12.5	Abt. 0.72 W	80% Maximum	5% Minimum	130%
	5	138.9	36				
	6	120	50				
	9	78.3	115				
	12	60	200				
	24	29.3	820				
GZ-L/LM GZT-LM	3	176.5	17	Abt. 0.54 W	80% Maximum	5% Minimum	130%
	5	106.4	50				
	6	88	68				
	9	58	155				
	12	44.4	270				
	24	21.8	1,100				
	48	10.9	4,400				

Contact Rating

Item	Type	GZ	GZT
Contact Capacity Resistive Load (Cos $\phi = 1$) Inductive Load (Cos $\phi = 0.4$) L/R = 7 mSec)		20A/120VAC 20A/24VDC 16A/240VAC	TV-8/120VAC (Incandescent Lamp 8A) 16A/240VAC 16A/24VDC
Rated Carrying Current		16A	8A
Max. Allowable Voltage		AC 240V DC 110V	AC 240V DC 110V
Max. Allowable Current		16A	8A
Max. Allowable Power Force		2400VA 600W	1600VA 400W
Reference Minimum Applicable Load		DC10V 10mA	
Contact Material		Ag Alloy	Ag Alloy

Performance (at Initial Value)

Item	Type	GZ-D/DM GZT-DM	GZ-L/LM GZT-LM
Contact Resistance		100 m Ω Max.	
Operate Time		15 mSec. Max.	20 mSec. Max.
Release Time		8 mSec. Max.	
Dielectric Strength Between Coil & Contact Between Contacts		AC 4,000V at 50/60 Hz for 1 Minute AC 1,000V at 50/60 Hz for 1 Minute	
Surge Resistance		10,000V(between coil & contact 1x40 μ Sec.)	
Insulation Resistance		100 Megga Ω Min. at DC 500V.	
Max. On/Off Switching Electrical Mechanical		300 operations per Minute 30 operations per Minute	
Operating Ambient Temperature Range		-30 to + 55°C (No condensation of water drop)	
Operating Humidity		45 to 85% RH.	
Coil Temperature Rise		45 degree Max.	35 degree Max. (at rated coil voltage)
Vibration Endurance Error Operation		10 to 55 Hz dual amplitude width 1.5mm 10 to 55 Hz dual amplitude width 1.5mm	
Shock Endurance Error Operation		100 G Minimum 10 G Minimum	
Life Expectancy Mechanical Electrical		10,000,000 operations Minimum. (no load) 100,000 operations Minimum. (at rated coil voltage) (TV rating load: 25,000 operations min.)	
Weight		Abt. 13 g	

Reference Data

