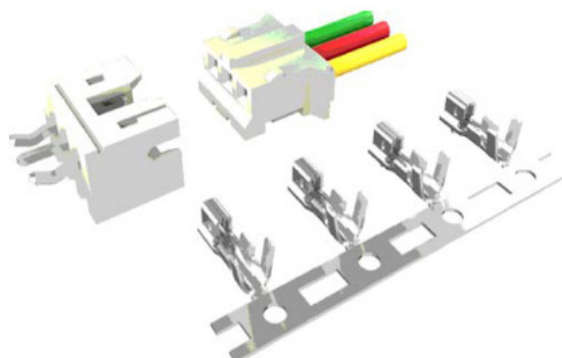


PH Type Female Housing & Contact

2mm Pitch

Specifications

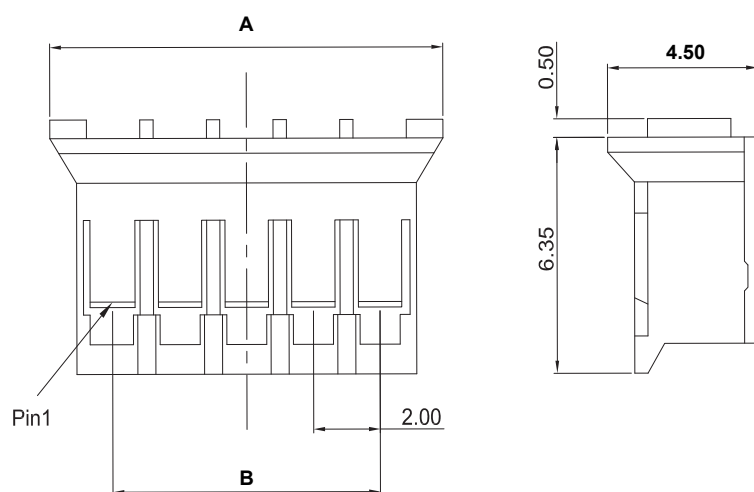
Pitch:	2.00mm
Type:	Female Housing/Contact
Poles:	2 to 12
Rated Voltage:	100V
Rated Current:	2A
Operational Temperature:	-25°C to +85°C
Withstand Voltage:	800V AC for 60s
Insulation Resistance:	1000MΩ
Wire Range:	AWG#30~#24Contact
Resistance:	20MΩ
Contact Plating:	Tin
Housing Material:	Nylon 66
Contact Material:	Copper Alloy



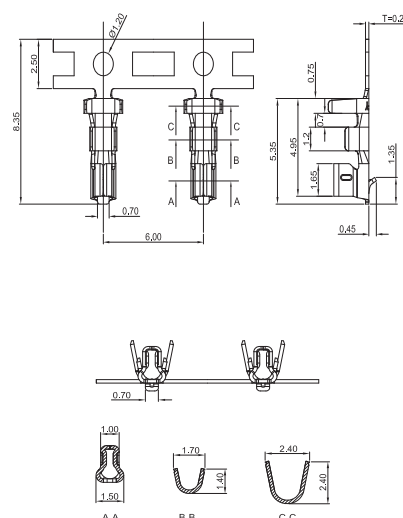
Order Code		No. of Poles	$A = N \times 2.00 + 1.8$	$B = (N-1) \times 2.00$
65-6600	Contact	-	-	-
65-6601	Housing	2	6.00	2.00
65-6602	Housing	3	8.00	4.00
65-6603	Housing	4	10.00	6.00
65-6604	Housing	5	12.00	8.00
65-6605	Housing	6	14.00	10.00
65-6606	Housing	8	18.00	14.00
65-6607	Housing	10	22.00	18.00
65-6608	Housing	12	26.00	22.00

Note: N = No. of contact

Female Housing



Female Contact



For further information on pricing, delivery, and long-term stock agreements please get in touch with your local business development contact. Telephone our main office on **01206 751166** or email **Sales@Rapidonline.com**.

The information contained in this datasheet is subject to change without notice and replaces all data sheets previously supplied.

