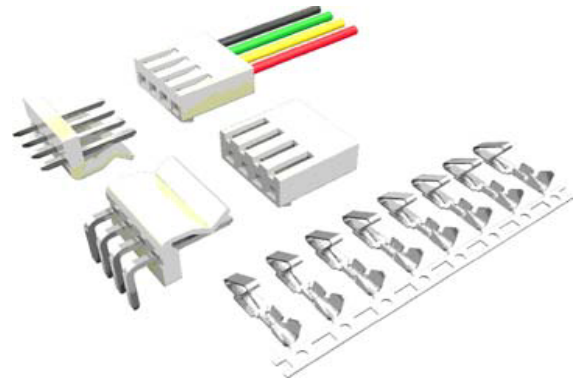


Specifications

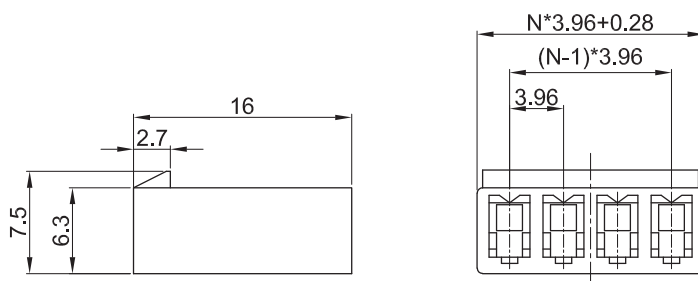
Pitch:	3.96mm
Type:	Female Housing/Contact
Poles:	2 to 12
Rated Voltage:	250V
Rated Current:	7A
Operational Temperature:	-25°C to +85°C
Withstand Voltage:	1500V AC for 60s
Insulation Resistance:	1000MΩ
Wire Range:	AWG#24~#18
Contact Resistance:	30MΩ
Contact Plating:	Tin
Housing Material:	Nylon 66



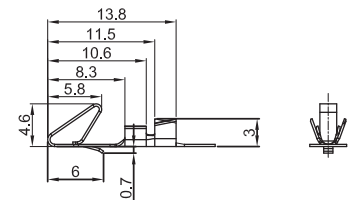
Order Code		Poles	$A = N * 3.96 + 0.28$	$B = (N - 1) * 3.96$
65-6709	Contact	-	-	-
65-6710	Housing	2	8.2	3.96
65-6711	Housing	3	12.16	7.92
65-6712	Housing	4	16.12	11.88
65-6713	Housing	5	20.08	20.32
65-6714	Housing	6	24.04	25.04
65-6715	Housing	8	31.96	30.48
65-6716	Housing	10	39.88	35.56
65-6717	Housing	12	47.8	40.64

Note: N = No. of contact

Female Housing



Female Contact



Female Contact

Wire Range		O.D of Wire
Section Area (mm) ²	AWG#	mm
0.2-0.75	24~18	1.3~2.8

For further information on pricing, delivery, and long-term stock agreements please get in touch with your local business development contact. Telephone our main office on **01206 751166** or email **Sales@Rapidoonline.com**.

The information contained in this datasheet is subject to change without notice and replaces all data sheets previously supplied.

