

Rocker Switch, Snap-in Panel Mount, 12A



DESCRIPTION

A range of snap-in, panel mounting rocker switches. These robust 'snap-in' panel-mounting rocker switches have a double-pole, single-throw (DPST) configuration, ensuring reliable on-off functionality. Rated at 250V AC and 12A, they are built to handle demanding electrical loads. These switches are designed for easy installation, and the durable construction guarantees long-lasting performance. Ideal for both professional repair services and DIY enthusiasts.

DISTINCTIVE FEATURES

- Switch legend O / I
- Panel mounting
- DPST, On-Off
- Illuminated/non-illuminated
- Current Rating: 12A
- Voltage Rating: 250V AC

APPLICATIONS

These rocker switches can be used in a variety of applications. They are suitable for use in vacuum and steam cleaners to control power or function settings, ensuring reliable performance in high-moisture and high-temperature environments.

12A

250V

DPST

Snap fit



ELECTRICAL SPECIFICATION

Rating per certification	
EN 61058	UL 1054
12 A / 250 VAC 6 (6) A / 250 VAC 5 (5) A / 250 VAC - 5E4	15 A / 125 VAC 12 A / 250 VAC
Temperature	Temperature
125/55 °C	65 °C



GENERAL SPECIFICATION

Type	Rocker switch
Contact	DPST
Cycle No.	50.000
Cut out	19×13 mm



ENVIRONMENTAL/OPERATING SPECIFICATION

Ambient temperature	125 °C
Glow wire test	850 °C
GWT no flame (<2sec)	750 °C on demand



CERTIFICATION AND STANDARDS

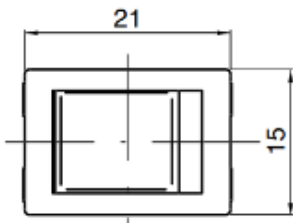
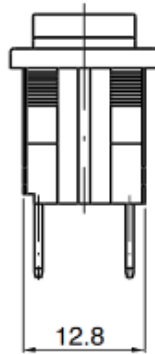
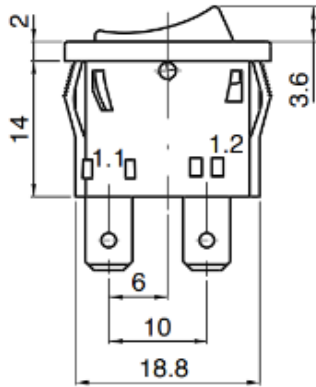
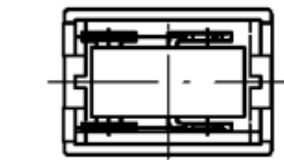
ENEC
US
CE
RoHS



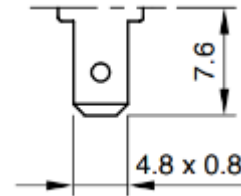
DIMENSIONS/DRAWINGS

Dimensions	mm
------------	----

Dimensions



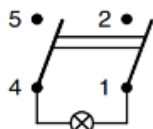
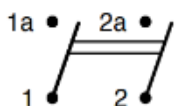
Terminal



Wiring diagram

2

8

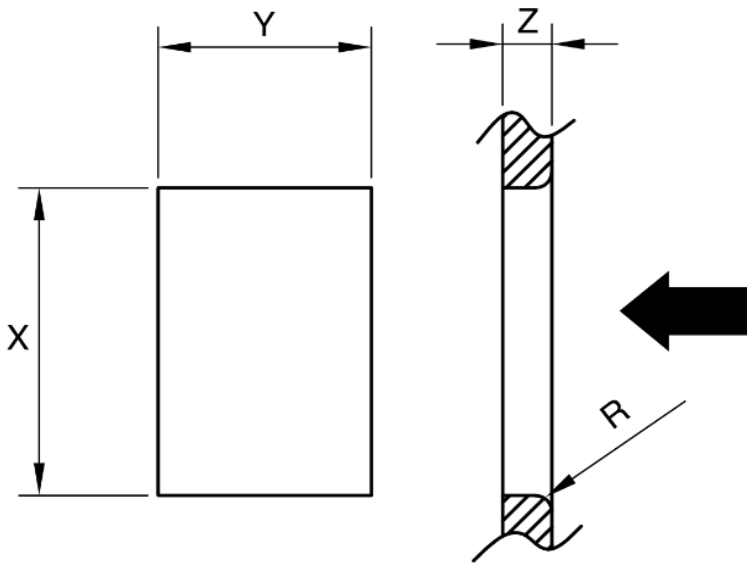




DIMENSIONS/DRAWINGS

Cut out

Height Y (mm)	Width X (mm)	Panel thickness Z (mm)
19,1±0,1	13,0±0,1	0,70-1,25
19,4±0,1	3,0 ±0,1	1,25-2,0
19,7±0,1	3,0 ±0,1	2,0-3,0





PART NUMBER TABLE

Part Number	Colour	Feature	Wiring diagram	UNSCPSC	EAN
52-3182	Black	On-off, quick connection, snap-in fit	2	39122226	5053556015054
52-3184	Black	On-off, quick connection, snap-in fit	2	39122226	5053556015061
52-3186	Black, red illuminated	On-off, quick connection, snap-in fit	8	39122226	5053556015078
52-3188	Black, green illuminated	On-off, quick connection, snap-in fit	8	39122226	5053556015085



OPTIONS (MOQ MAY APPLY)

Body colour	White and custom
Rocker colour	White, red
Marking colour	White, red
Illumination	Custom
Markings	Lamp, end indicator, I-O, custom

For further information on pricing, delivery, and long-term stock agreements please get in touch with your local business development contact, telephone our main office on **01206 838000** or email **Sales@Rapidonline.com**.



Tried & trusted technology