

## Product information

# 87 21 300

## KNIPEX Cobra® QuickSet Hightech Water Pump Pliers

DIN ISO 8976



- Fully open, push, grab!
- Additional fast adjustment on the workpiece by sliding the pliers handle
- Combines the proven, reliable locking of the hinge bolt with an additional push function which makes it easier to work in very confined and inaccessible areas
- The adjustment directly on the workpiece is possible by simply sliding the pliers handle
- Reliable locking of the hinge bolt with the first workload. The gripping width of the pliers is then fixed and can only be adjusted by pressing the button.
- To re-activate the sliding function, the hinge bolt must be released by pressing the push button and the pliers must be completely opened again
- Chrome vanadium electric steel, forged, multi stage oil-hardened

### General

Article No.	87 21 300
EAN	4003773078524
Pliers	grey atramentized
Head	polished
Handles	with non-slip plastic coating
weight	530 g
Dimensions	300 x 52 x 19 mm
Standard	DIN ISO 8976
Reach	no
RohS	no

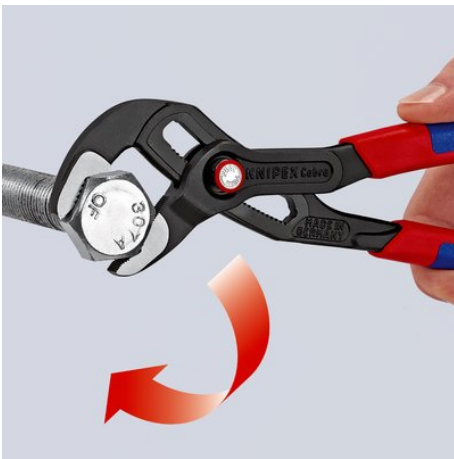
### Technical details

Adjustment positions	25
Capacity for pipes, inches (diameter)	Ø 2 3/4 Inch
Capacities for nuts	60 mm
Capacities for pipes (diameter)	Ø 70 mm

### Classification

eCl@ss 5.1.4	21040301
ETIM 5.0	EC000164
ETIM 6.0	EC000164
proficl@ss 6.0	AAA936c004
UNSPSC 13.1	27112112

technical change and errors excepted



Hinge bolt locks itself with the first workload



Position jaw – simply slide and close pliers



Press the button – open pliers completely