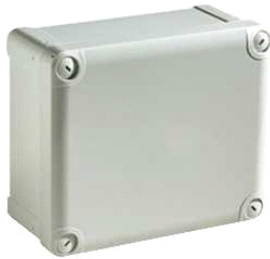


NSYTBS19168

ABS box IP66 IK07 RAL7035 Int.H175W150D80
Ext.H193W164D87 Opaque cover H20



Main

Range	Thalassa
Product name	Thalassa TBS
Device application	Multi-purpose
Product or component type	Industrial box
Height	192 mm
Width	164 mm
Depth	87 mm
Internal height	175 mm
Internal width	150 mm
Internal depth	80 mm
Enclosure mounting	Wall mounted
Device composition	1 x body 1 x cover 4 x cover screw
Body type	One piece moulded
Type of front cover	Low plain cover
Cover fixing	Plastic screws
Lock type	Outside sealed area: flat screwdriver captive screw
Removable parts	Cover, by captive screws

Complementary

Material	ABS
Colour	Grey (RAL 7035)
Standards	IEC 62208
Product certifications	DEMKO SEMKO TÜV
IP degree of protection	IP66conforming to NEMA 4.4X
IK degree of protection	IK07conforming to IEC 62262
Fire resistance	650 °C conforming to IEC 60695-2-11
Ambient air temperature for storage	-15...40 °C
Ambient air temperature for operation	-25...60 °C

Environment

Offer Sustainability

Sustainable offer status	Not Green Premium product
RoHS (date code: YYWW)	Compliant - since 0940 - Schneider Electric declaration of conformity
REACH	Reference not containing SVHC above the threshold
Product end of life instructions	Need no specific recycling operations

Contractual warranty

Warranty period	18 months
-----------------	-----------

The information provided in this documentation contains general descriptions and/or technical characteristics of the products contained herein. This documentation is not intended as a substitute for and is not to be used for determining suitability or reliability of these products for specific user applications. It is the duty of any such user or integrator to perform the appropriate and complete risk analysis, evaluation and testing of the products with respect to the relevant specific application or use thereof. Neither Schneider Electric Industries SAS nor any of its affiliates or subsidiaries shall be responsible or liable for misuse of the information contained herein.