

## RUZC3M

socket RUZ - mixed contact - 10A - < 250V -  
connector -for relay RXM2.., RUMC3..



### Main

|                               |  |
|-------------------------------|--|
| Range of product              | Zelio Relay  |
| Product or component type     | Socket   |
| Contact terminal arrangement  | Mixed  |
| Product compatibility         | Plug-in relay RUM (3 C/O)<br>Plug-in relay RE48A (2 C/O) |
| Shape of pin                  | Cylindrical  |
| Device short name             | RUZ  |
| Sale per indivisible quantity | 10   |

### Complementary

|   |  |
|---|--|
| [Ith] conventional free air thermal current | 10 A   |
| [Ue] rated operational voltage              | < 250 V  |
| Tightening torque                           | <= 1 N.m (M3.5 screw(s))   |
| Fixing mode                                 | By screw mounting on panel<br>Clip-on mounting on 35 mm symmetrical DIN rail |
| Marking                                     | CE   |
| Width                                       | 38 mm  |
| Product weight                              | 0.054 kg   |

### Environment

|                                       |  |
|---------------------------------------|--|
| connections - terminals               | Connector, flexible cable with cable end 1 x 0.25...1 x 2.5 mm <sup>2</sup> / AWG 22...AWG 14<br>Connector, flexible cable with cable end 2 x 0.25...2 x 1 mm <sup>2</sup> / AWG 22...AWG 17<br>Connector, solid cable without cable end 1 x 0.5...1 x 2.5 mm <sup>2</sup> / AWG 20...AWG 14<br>Connector, solid cable without cable end 2 x 0.5...2 x 1.5 mm <sup>2</sup> / AWG 20...AWG 16 |
| standards                             | IEC 61984  |
| product certifications                | CSA<br>UL  |
| ambient air temperature for storage   | -40...85 °C  |
| ambient air temperature for operation | -40...55 °C  |
| IP degree of protection               | IP20 conforming to EN/IEC 60529  |
| dielectric strength                   | 2500 V   |

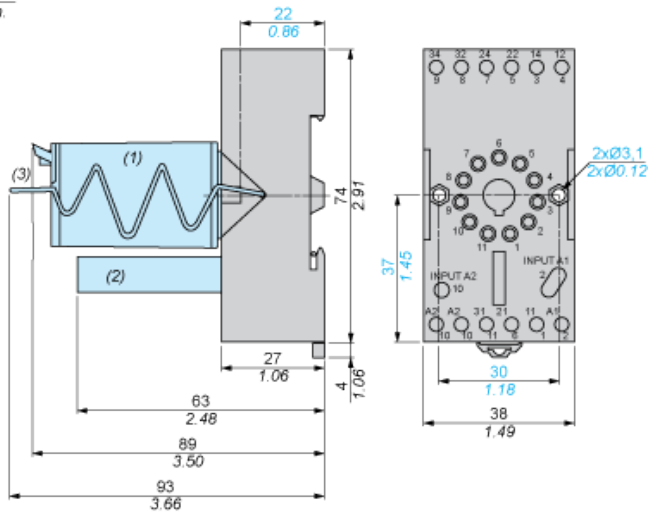
### Contractual warranty

|                 |           |
|-----------------|-----------|
| Warranty period | 18 months |
|-----------------|-----------|

### Dimensions

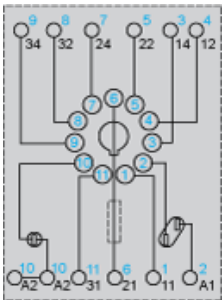
The information provided in this documentation contains general descriptions and/or technical characteristics of the products contained herein. This documentation is not intended as a substitute for and is not to be used for determining suitability or reliability of these products for specific user applications. It is the duty of any such user or integrator to perform the appropriate and complete risk analysis, evaluation and testing of the products with respect to the relevant specific application or use thereof. Neither Schneider Electric Industries SAS nor any of its affiliates or subsidiaries shall be responsible or liable for misuse of the information contained herein.

mm  
in.



- (1) Relays
- (2) Protection module
- (3) Maintaining clamp

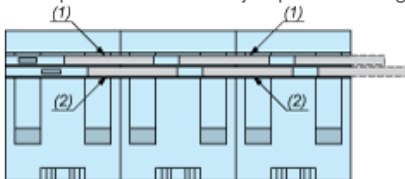
### Wiring Diagram



Symbols shown in blue correspond to Nema marking.

### Bus Jumpers Mounting on Sockets with Separate Contacts

Example of RUZS2 bus jumper mounting on sockets (view from below)



- (1) 2 bus jumpers (polarity A2)
- (2) 2 bus jumpers (polarity A1)