

## General Purpose

### Features

- General conducted attenuation performance
- Compact design, lower cost
- With IEC320 AC socket
- Current rating 1A~20A
- Practical solution for general and medical devices

### Marketing Applications

- IPC
- Claw machine
- UPS
- SMPS
- Power supply

### Numbering System

1 SS1 2 - 3 4 5 6 - 7 ( 8 )

#### 1 Rated current

01,03,06,10,15,20

#### 2 Electrical schematic

Blank: standard  
A: medical compliance

#### 3 Type of case (refer P02 Mechanical drawing)

Blank: screw mounting, only for 1~15A, please add 8  
P: snap-in mounting, only for 1~15A  
F: screw mounting, only for 20A

#### 4 Components value (refer P02 Filter selection table)

Blank: Cx=0.1uF, Cy=2.2nF  
B: Cx=0.1uF, Cy=3.3nF

#### 5 Grounded choke (optional)

G: Lg= 100uH

#### 6 Bleeder resistor (optional)

R: R= 1M ohm; 1/4W min.

#### 7 Output connections (refer P02 Output terminal)

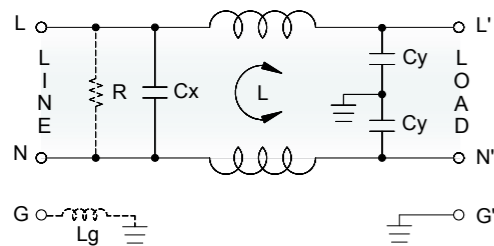
Q: fast-on tab (6.3mm)  
W: with wired (100mm)

#### 8 Type of case

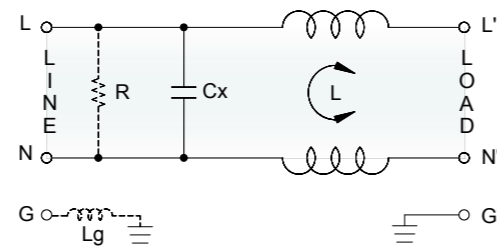
S: screw mounting, only for 1~15A

### Electrical Schematic

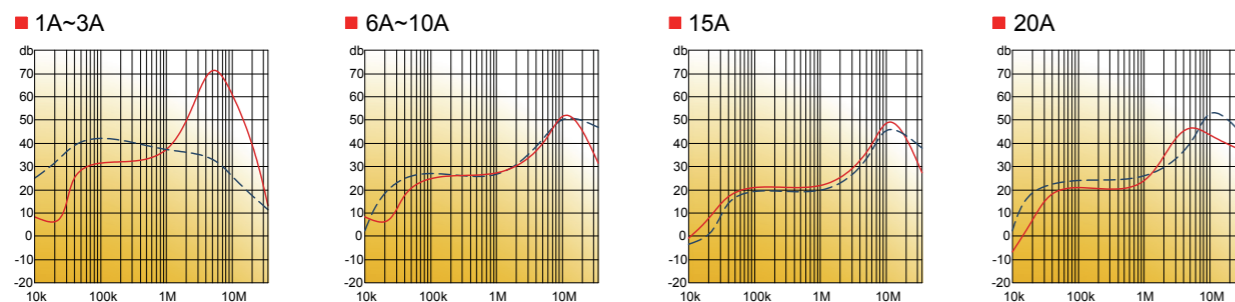
Blank: standard



A: medical compliance



### Filter Attenuation Insertion loss (dB) in 50 ohm system CISPR 17 (for reference only)



Common mode / Asymmetric (L-G) ———  
Differential mode / Symmetric (L-L) - - - - -

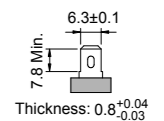
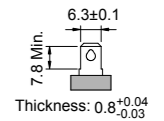
### Filter Selection Table

Filter Part No.	Rated Current @50°C [A]	Leakage Current @250VAC/50Hz [μA]	Inductance @10KHz 0.25V [mH]	Capacitance		Output terminal	
				Cx [uF]	Cy [nF]		
<b>Blank: standard</b>							
01SS1-...	1	450	6.5	0.1	2.2	-Q	-W
03SS1-...	3	450	2.5	0.1	2.2	-Q	-W
06SS1-...	6	450	0.8	0.1	2.2	-Q	-W
10SS1-...	10	450	0.2	0.1	2.2	-Q	-W
15SS1-...	15	450	0.2	0.1	2.2	-Q	-W
20SS1-...	20	450	0.5	0.1	2.2	-Q	-W
01SS1-B..	1	600	3.7	0.1	3.3	-Q	-W
03SS1-B..	3	600	1.8	0.1	3.3	-Q	-W
06SS1-B..	6	600	0.8	0.1	3.3	-Q	-W
10SS1-B..	10	600	0.3	0.1	3.3	-Q	-W
15SS1-B..	15	600	0.2	0.1	3.3	-Q	-W
20SS1-B..	20	600	0.5	0.1	3.3	-Q	-W
<b>A: medical compliance</b>							
01SS1A-...	1	5	6.5	0.1	-	-Q	-W
03SS1A-...	3	5	2.5	0.1	-	-Q	-W
06SS1A-...	6	5	0.8	0.1	-	-Q	-W
10SS1A-...	10	5	0.2	0.1	-	-Q	-W
15SS1A-...	15	5	0.2	0.1	-	-Q	-W

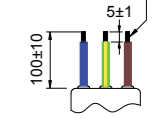
### Output Terminal

(unit: mm)

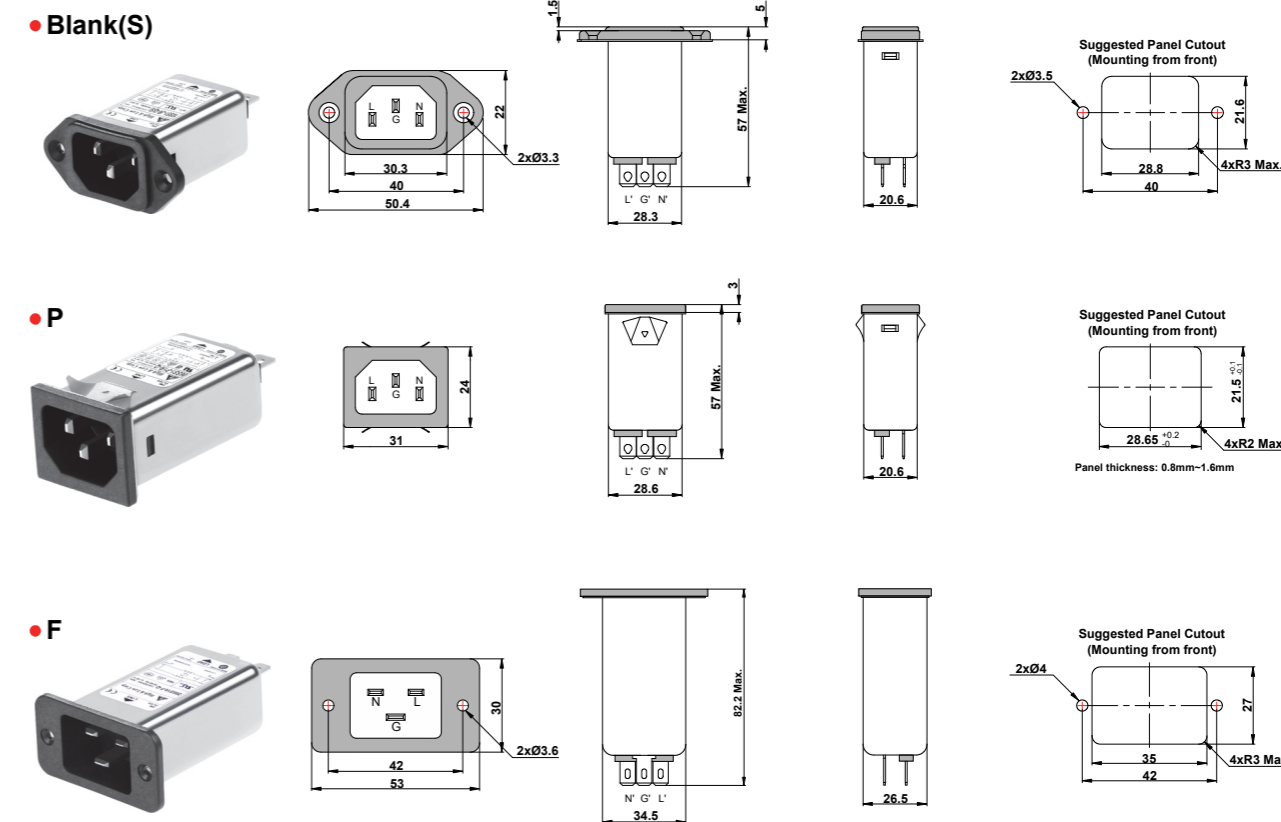
Q: fast-on tab based on UL310 standard



W: with wired stripped and tinned



### Mechanical Drawing (unit: mm)



Please call for alternatives