

## Features:

1. High current accuracy\*
2. Protection against excessive temperature
3. Snap action
4. Automatic reset type
5. Long life
6. P.B.T. resin enclosure
7. Economically priced
8. Reliable
9. Two mounting options

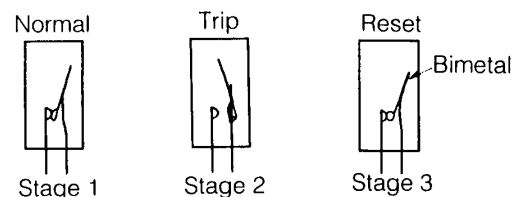
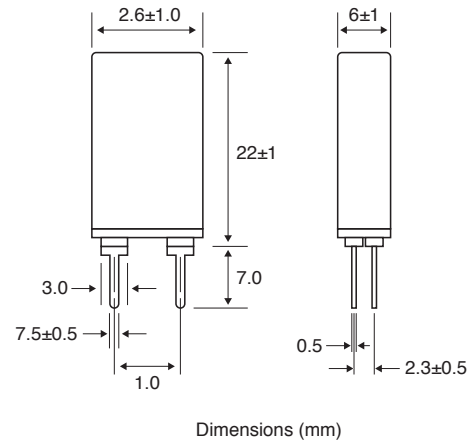
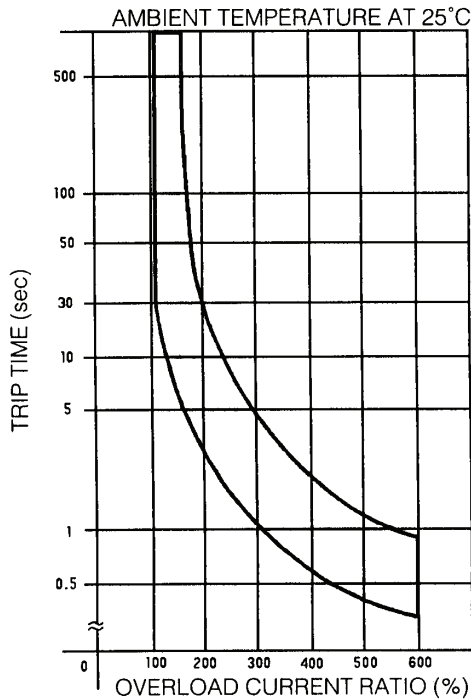
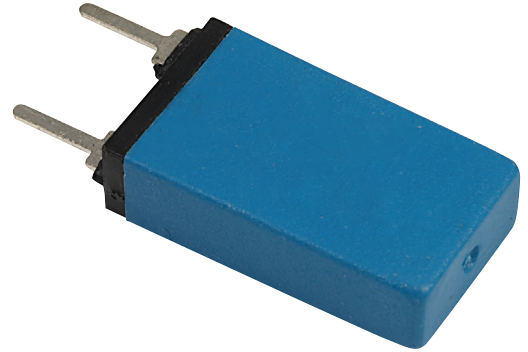
\* Low current models should be used within following maximum ambient temperatures:

AN -04, AN-05 50°C

AN-06 – 60°C

AN-08 – 70°C

Note: Rated hold current decreases with temp >25°C, and increases with temp <25°C



Order code	Type 1	Rated hold current (A)	Max volage (V)	Trip time		Internal resistance (m )	Maximum interrupt current (A)
	PC			AC at 25°C			
26-1125	AN-161	1.6	250	200%	300%	Under 100	20
26-1140	AN-221	2.2	250	200%	300%	Under 75	20
26-1160	AN-301	3.0	250	200%	300%	Under 35	30
26-1185	AN-501	5.0	250	200%	300%	Under 30	50