

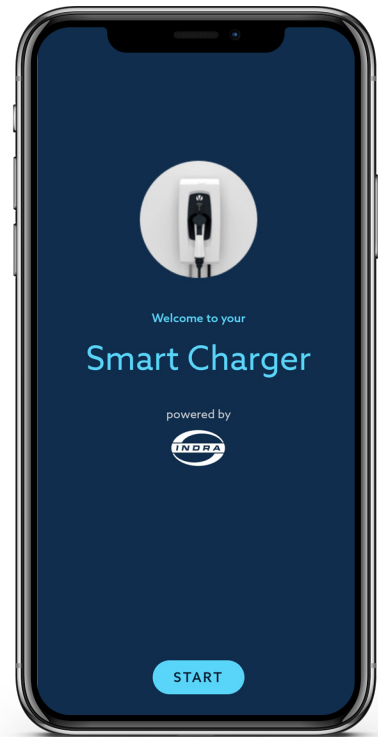


# Indra Smart PRO

## Product Brochure

# Getting Started with your new Indra Smart PRO EV charger

At the end of the charger installation, the technician will ask you for your email address, this is needed to generate your welcome email from our app providers Kaluza with details of how to register for the **Indra App**. The **Indra App** is designed to get the most out of your Smart PRO; allowing you to monitor status, set the charging mode, update preferences, view charging history, get support and more. Once you've created an account and signed-in for the first time, you will be guided through the initial set-up and details of the key smart features:



**Off-peak charging** can be set up via the 'schedule' button found on the bottom navigation bar in the Indra app. Set the daily schedule and let the Smart PRO do the rest.



Using the **quick boost** feature is easy! Any time you want to boost your charging to it's maximum possible rate, just simply press the **BOOST** button on your charger or from the icon found at top right of your Indra app.



To utilise the **solar matching** capabilities available with your Indra Smart PRO choose 'more' on your bottom navigation bar and then select '**microgeneration**'. Input your energy source in the menu and choose to divert your surplus energy into your car.

To add your **tariff** information to your Indra app navigate to 'more' on the bottom navigation bar and then to tariff. Simply enter your energy supplier and tariff details for both peak and off-peak periods.

To view your **charging history** access 'History' from the bottom navigation bar and view your daily charging usage, costs and times.



### **WEATHER PROTECTED**

Come rain or shine, this small, eco-smart EV charger can handle the elements and continue to perform at optimum level all-year-round.



### **APP CONTROL**

Take control of your EV charger via the Indra App. Check your status, update preferences and track your charging history from your mobile phone.



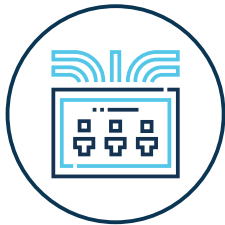
### **SMART SCHEDULING**

The Smart PRO automatically generates a personal charging schedule each time you plug-in based on your preferences to ensure you're always topped up.



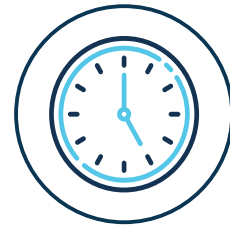
### **SOLAR CHARGING**

As a solar compatible EV charger, you can utilise your free green electricity from your solar panels to power your electric vehicle.



### **HOUSE FUSE PROTECTION**

Don't worry about blowing a fuse. Your Smart PRO dynamically changes the maximum power to your EV charger depending on what else is being used in your home.



### **OFF-PEAK CHARGING**

Add your electricity tariff details in the Indra App and your electric car will automatically be charged at the cheapest times to keep your energy bill down.



### **QUICK BOOST**

Plans changed? The Smart PRO Boost feature lets you temporarily override your schedule to get your car fully charged as soon as possible.



### **CONTINUOUS UPDATES**

Thanks to our over-the-air (OTA) updates, your Smart PRO will automatically receive remote software updates to keep it getting smarter every day.



The Smart PRO is the smartest AC Electric Vehicle charger available on the market. Fully-featured, the Smart PRO will ensure your EV charges at the optimum time, and is available when you need it to be. Smart by name, and smart by nature.

## Product Overview

- Market-leading range of smart features, including solar matching and load curtailment
- Capable of delaying charging sessions to ensure they take place at the cheapest time
- Fully-integrated with no need to install additional hardware or boxes
- Remotely updateable firmware to allow rapid deployment of new features
- 5-year product warranty
- Available with a Universal Socket, Type 1 tethered cable, or Type 2 tethered cable

The Smart PRO is the most feature-rich EV charger available on the market, ensuring your EV is always ready when you need it whilst maximising opportunities to charge from local solar and from the Grid when it is cheapest to do so. The Smart PRO features a simple on-unit interface and a supporting App that provides current status and historical information, as well as enabling easy configuration of the unit.

The Smart PRO is fully compliant with all relevant standards and works with all EVs, those available today and those coming in the future. It is quick and easy to install. The Smart PRO comes with a 5-year warranty as standard, and will never let you down, ensuring you are always charged and ready to go when you need to be.













# Specifications

## Key Features



Solar  
matching



Load  
limiting



Load  
curtailment



Ready-by  
time



Charging  
schedule

## Electrical

Rated power	7.4kW
Charging current	6A-32A variable
Protection	6ma DC leakage detection
Standby consumption	<5W

## Mechanical

Dimensions	200mm x 420mm x 130mm (WxHxD)
Weight	3.5kg
Operating Temperature	-20°C to +50°C
Operating Humidity	5% - 95%
Enclosure	Polycarbonate, IP66 rated
Protection	IK10

## Compliance

CE Marked and UKCA	✓
Standards and regulations	The Electric Vehicles (Smart Charge Points) Regulations 2021, BS EN 50581, BS EN 60529, BS EN 61010-1, BS EN 61851-1, IEC 61851-21-2, IEC 61851-22, BS 7671, BS 7671 Amendment 1, G100



## Contact Indra

For more information, please contact us;



**INDRA Renewable Technologies**  
Unit 1, Sentinel House,  
Sparrowhawk Close, Malvern,  
Worcestershire, WR14 1GL



**United Kingdom** 01684 770 631  
**Worldwide** 00441684 770 631



**Email** [support@indra.co.uk](mailto:support@indra.co.uk)