

# ARD-1-63-TP-R-SPD

Three-phase connection unit with auto reset isolator, Type 2 SPD, and 1 x 63A TPN Type A RCBO

The matt:e ARD connection centres with unique 5 pole auto reset device and built in Type 2 SPD.

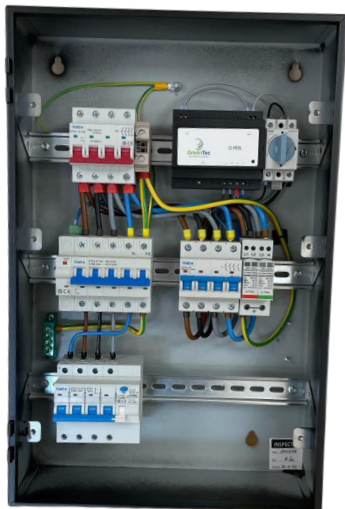
Simple to install, dedicated EV connection centres with built in O-PEN<sup>®</sup> technology that allows for the connection of EV charge points to the PME earthing facility without the use of earth electrodes.

Helping to facilitate compliance with BS:7671. 2018 Amendment 2, 2022 Regulation 722.411.4.1.(iii).



## Product Features and benefits

- Built in O-PEN<sup>®</sup> technology
- NO EARTH ELECTRODES REQUIRED
- Helps reduce disruptive and costly groundworks
- Removes the risk of striking buried services
- Simple wire in wire out connection
- Complete with Type 2 SPD
- With built in 63A TPN Type A RCBO
- Mild steel IP4X enclosure
- Standard 1 Year parts warranty.



Specifications	
Input Volts	400V 50Hz
Max Load	63amps
Cable Entry Facility	Top and bottom
Terminal Capacity	25mm <sup>2</sup>
Dimensions ( H x W x D )	550mm x 360mm x 120mm
Weight	Approximately 7kG
Enclosure	Mild Steel Powder Coated
Ingress Protection	IP4X
Warranty	1 Year



...Simplifying EV connection

T: 01543 227290 | E: info@matt-e.co.uk | W: www.matt-e.co.uk

matt:e Ltd, Unit 1 Langley Brook Business Park, Middleton, Tamworth B78 2BP