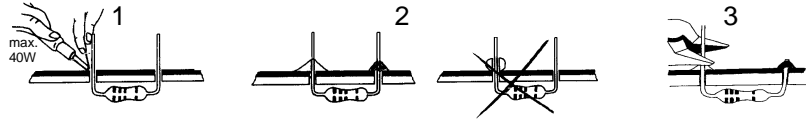


Order code	Manufacturer code	Description
70-4016	n/a	VELLEMAN ADJUSTABLE TIMER & RELAY OUTPUT

	Page 1 of 2
The enclosed information is believed to be correct, Information may change without notice due to product improvement. Users should ensure that the product is suitable for their use. E. & O. E.	Revision A 20/02/2007



1 **START**

Resistor - Weerstand - Résistance - Widerstand - Resistencia - Motstand - Vastus - Resistenze

◇R1: 1K
◇R2: 1K
◇R3: 1K

Brown, Black, Red) -(Bruin, Zwart, Rood) -(Brun, Noir, Rouge) -(Braun, Schwarz, Rot) -(Brun, Svart, Röd) -(Ruskea, Musta, Punainen) -(Marrón, Negro, Rojo) -(Castanho, Preto, Encarnado) -(Marrone, Nero, Rosso)

2 **DIODE**

◇D1: 1N4148
◇D2: 1N4148
◇D3: 1N4007

3 **-Trimmpotentiometer - Potentiomètre de réglage - Potentiometro de regulación - Trimmerpotentiometri - Trimmerpotentiometer - Trimmer potenziometri**

◇RV1: 1M PAUSE

4 **Capacitor - Condensateur**

◇ C1: 100nF (104, µ1)

5 **LED**

◇LD1: 3mm

COLOR= 2... Watch the polarity !

6 **IC Socket - IC voet - Support de CI - IC Fuß - Soppo del CI - IC Socket - Mikroipiirkanta - IC sokkel - Zoccolo IC**

7 ◇ J1 + J2

8 **ELCO**

◇C2: 100µF
◇C3: 100µF
Watch the polarity !

9 **RELAY RELAIS RELE**

◇ RY1: 1C

10 **IC - CI** ◇ IC1: 555

