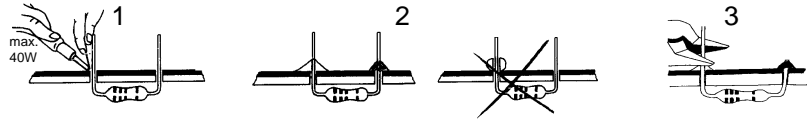
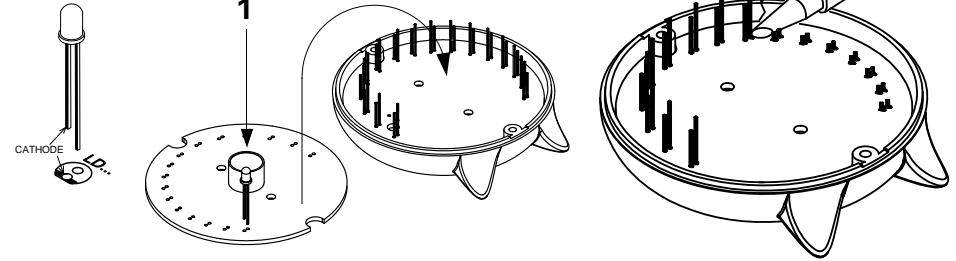


Order code	Manufacturer code	Description
70-4036	n/a	VELLEMAN KITCHEN TIMER KIT
70-4036	n/a	VELLEMAN KITCHEN TIMER KIT

	Page 1 of 2
The enclosed information is believed to be correct, Information may change 'without notice' due to product improvement. Users should ensure that the product is suitable for their use. E. & O. E.	Revision A 04/07/2003



**8** LEDs



**START**

**1** Resistor - Weerstand - Résistance - Widerstand - Resistencia - Motstand - Vastus - Resistenze

◇ R1: 47K (Yellow, Purple, Orange) - (Geel, Paars, Oranje) - (Jaune, Violet, Orange) - (Gelb, Violet, Orange) - (Gel, Lila, Orange) - (Keltainen, Purppura, Oranssi) - (Amarillo, Morado, Naranja) - (Amarelo, Violeta, Laranja) - (Giallo, Viola, Aranciato)

◇ R2, R3, R4, R5, R6 : 330 (Orange, Orange, Brown) - (Oranje, Oranje, Bruin) - (Orange, Orange, Brun) - (Orange, Orange, Braun) - (Orange, Orange, Brun) - (Oranssi, Oranssi, Ruskea) - (Naranja, Naranja, Marrón) - (Laranja, Laranja, Castanho) - (Aranciato, Aranciato, Marrone)

◇ R7, R8 : 0 (Black) - (zwart) - (noir) - (Schwarz) - (Svart) - (Musta) - (Negro) - (Preto) - (Nero)

**2** IC

**Watch the position of the notch !**  
**Attention à la position de l'encoche !**

◇ IC1

**3** CAPACITOR

◇ C1 : 100nF (104) µ1

**9**

RED / ROUGE : +  
BLACK / NOIR : -

**10**

3xAAA 1.5V battery

1 2 3 4 5 6 7 8 9 10 11 12 13 14 15 16  
1' 2' 3' 4' 5' 6' 7' 8' 9' 10' 15' 20' 25' 30' 45' 60'

**4** ELECTROLYTIC CAPACITOR

Watch the polarity !  
Att. à la polarité !

◇ C2 : 47µF

**5** PUSHBUTTON

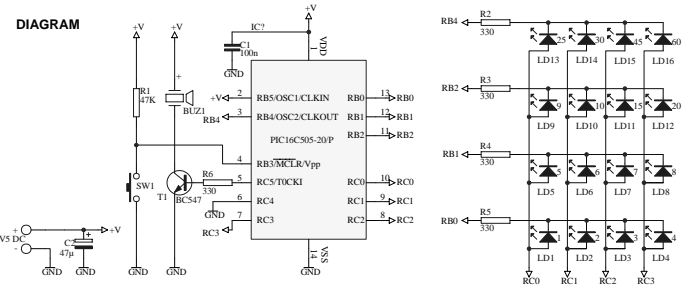
◇ SW1

**6** TRANSISTOR

◇ T1 : BC547

**7** BUZZER

◇ BUZ1



**STOP**