

<b>Order code</b>	<b>Manufacturer code</b>	<b>Description</b>
70-4182	n/a	8-CHANNEL RELAY CARD RC

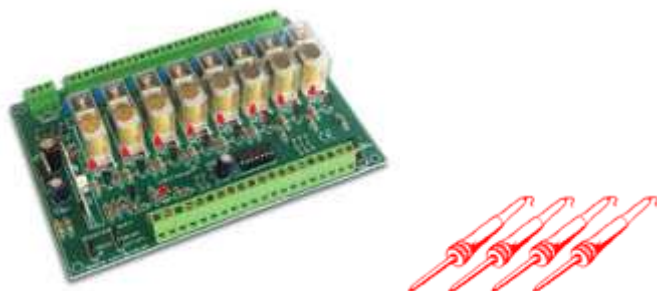
	Page 1 of 3
The enclosed information is believed to be correct, Information may change without notice due to product improvement. Users should ensure that the product is suitable for their use. E. & O. E.	Revision A 20/02/2007

[VELLEMAN PROJECTS](#) > [KITS](#) > [REMOTE CONTROL UNITS & DOMOTICS](#) >



## 8-CHANNEL RELAY CARD

**Order Code: K8056**

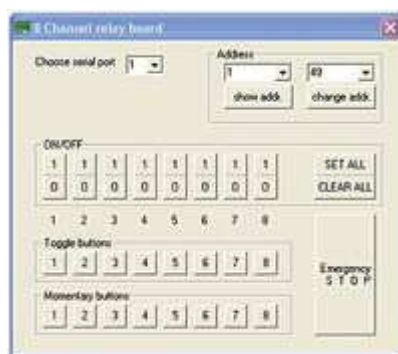


This relay card can be used in several ways : stand alone card, addressed by switches or open collector outputs or remote controlled through RS232. In option remote controlled using RF (radio frequency) signals ([K8058](#) remote control + [RX433N](#) module). Since the card can be addressed using RS232 commands, you may write custom applications in any programming language on any platform. Test software can be downloaded from our web site.

### Features

- DIAGNOSTIC / TEST SOFTWARE:
  - separate relay on/off test with moment or toggle function
  - clear all / set all relays function
  - address selection: up to 255 cards can be selected
  - emergency stop for all cards
- minimum system for test software:
  - Pentium class CPU
  - Windows 95 or higher
  - mouse and free RS232 port

[More...](#)



### Specifications

- 8 high quality relay contacts: 5A/230Vac max.
- relay outputs are transient suppressed using VDRs
- LED confirmation on each relay contact
- 8 drive inputs to use with open collectors or regular switches
- RS232 input to drive the card with computer or terminal: baud rate: 2400, no parity, 8 data bits, 1 stop bit, high or low impedance selection (10K or 1K)
- optional RF driving possibility using RX433N type module (not simultaneous with RS232) together with [K8058](#) eight channel RF remote control

- power output: unregulated 12Vdc / 200mA
- power supply: 12Vac / 500mA (including 12V output)
- diagnostic software downloadable from our site
- dimensions: 160 x 107 x 30mm (6.3" x 4.2" x 1.2")

## Files

- [RF projects features, specs & compatibility](#)
- [vellemanrfcrossreference.pdf](#)
- [illustrated\\_assembly\\_manual\\_k8056.pdf](#)
- [assembly\\_manual\\_k8056.pdf](#)

## Stock Info

- Inner carton:
- Outer Carton: 1
- EAN Barcode: 5410329283049
- Packaging: Box (Carton)

## Extra information

- **Linux software for K8056 relay board**  
<http://k8056.free.fr>
- **Velleman Kit Catalog**  
[Velleman Kit Catalog](#)

Please check [www.vellemanusa.com](http://www.vellemanusa.com) for availability in the USA and Canada.

(C) 2005 Velleman Components N.V.  
[ Disclaimer ]