

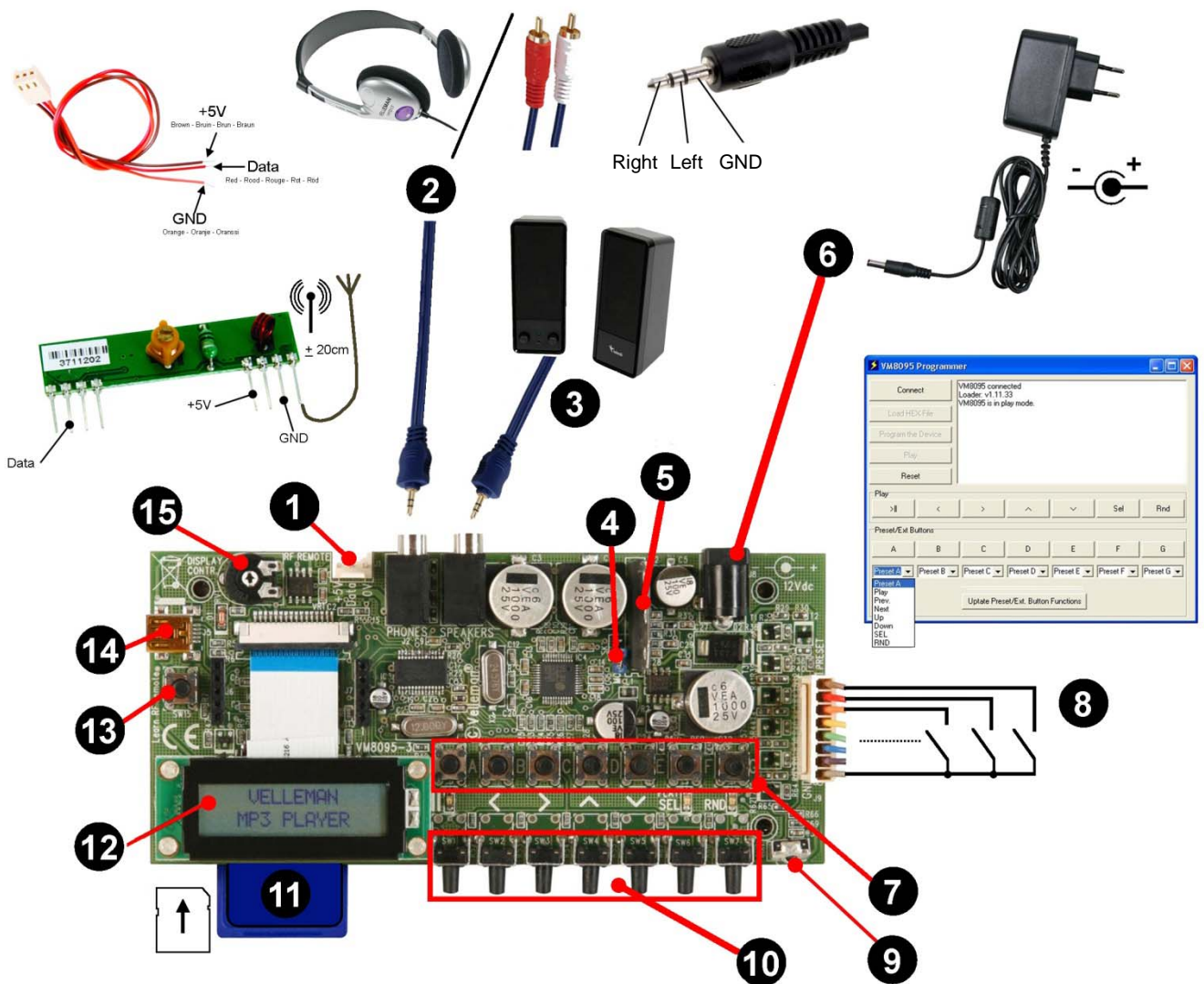
Usermanual for MP3 player K8095.

Version 1.0

Table of contents:

OVERVIEW CONNECTION OVERVIEW	3
LOUDSPEAKER CONNECTIONS DIAGRAM	4
LED INDICATIONS	4
OVERVIEW PUSH BUTTON CONTROL	5
STEREO / MONO USE	5
MODIFYING THE "PRESET" BUTTONS A ... G	6
LEARNING A REMOTE	7
1. LEARNING A RF REMOTE (VM118R / K8058 / VM160DT / VM160T).....	7
2. LEARNING A IR REMOTE (K8049).....	7
KEYBOARD LAYOUT FOR OPTIONAL REMOTES	8
SOUND & PLAY MODES	9
1. SOUND MODES:	9
2. PLAY MODE:.....	9
3. RANDOM MODE:.....	9
<i>Alle folders:</i>	9
<i>Selected folder:</i>	10
PRESET PUSH BUTTONS "A" – "B" – "C" – "D" – "E"	11

Overview Connection overview



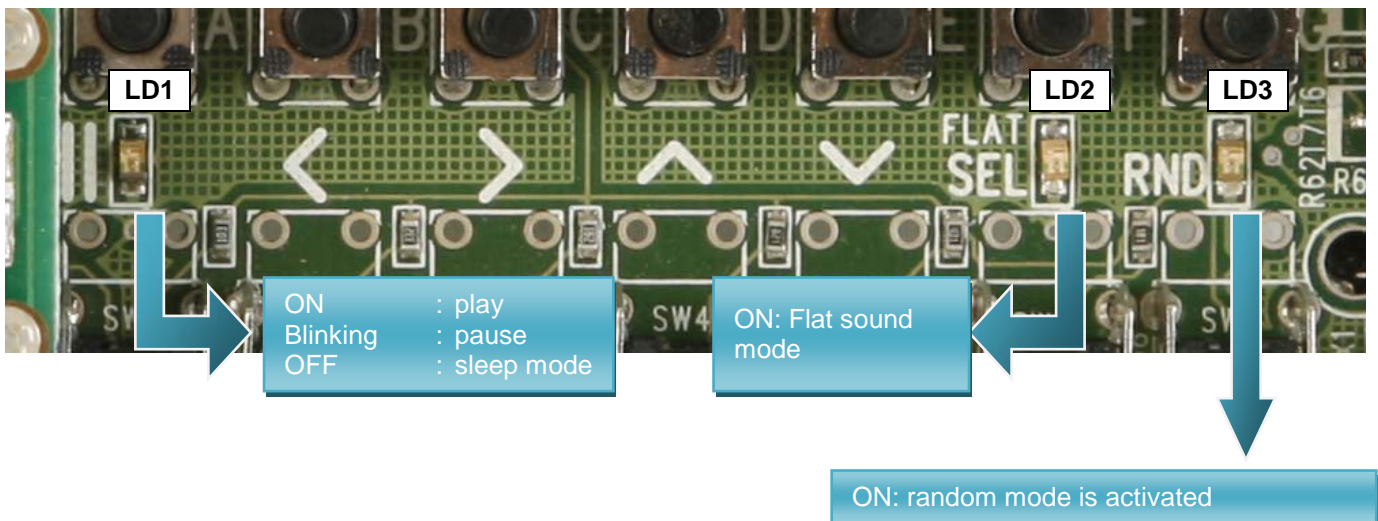
- 1 Optional RF remote receiver module (**part#: RX433N**)
- 2 Line or phones output
- 3 Direct stereo speaker connection (see connection diagram on pag. 4)
- 4 Mono or Stereo output selection
- 5 On board power amplifier
- 6 Adaptor input 12Vdc regulated min. 1A
- 7 7 on-board preset buttons
- 8 Connect up to 7 external preset buttons (same action like on-board ones)
- 9 On-board infrared receiver
- 10 On-board control buttons
- 11 SD/SDHC card input
- 12 2 line 16 character LCD with backlight
- 13 Remote learn button
- 14 Mini USB PC connection
- 15 LCD contrast setting

Loudspeaker connections diagram

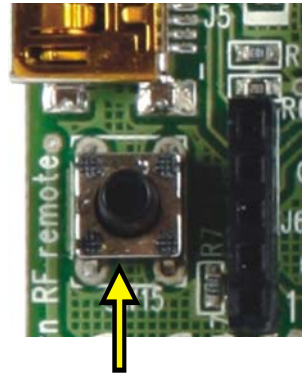
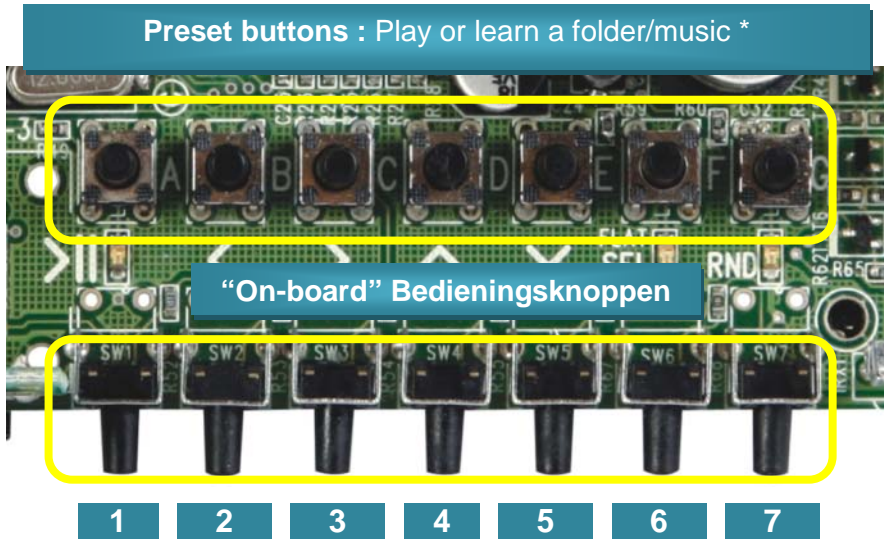


Hint: If multiple speakers are used you can connect speakers in series + parallel

Led indications

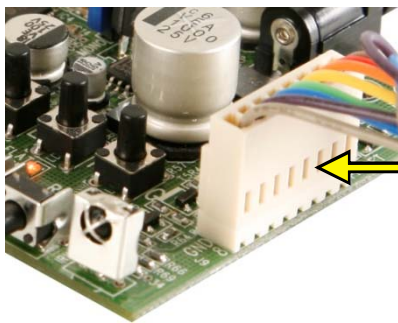


Overview push button control



RF Remote learn button

* These preset buttons will be assigned to folders A to E by default if these folders are present onto the SD card.



Connect up to 7 external preset buttons, these will have the same action like on-board ones.

Short press

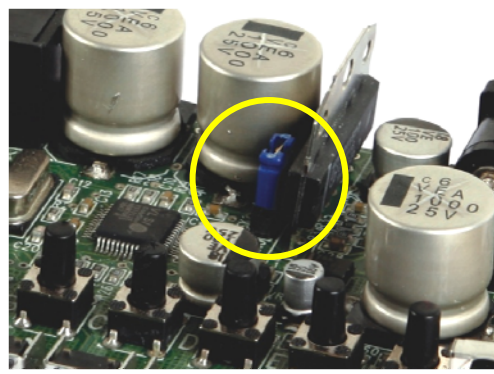
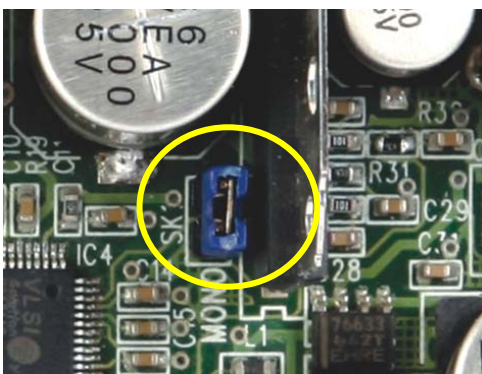
- 1 Play / Pause
- 2 Back
- 3 Forward
- 4 Volume up
- 5 Volume down
- 6 Sound mode
- 7 Random

Long press:

- 1 Sleep mode
- 2 Fast backward
- 3 Fast forward
- 6 Folder select / play mode

Stereo / mono use

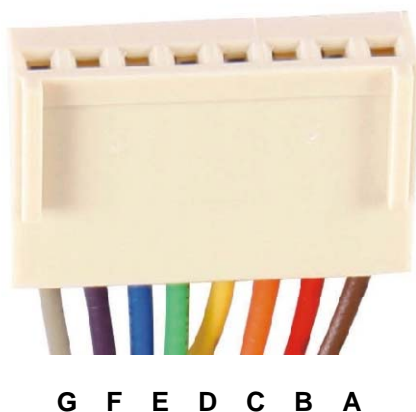
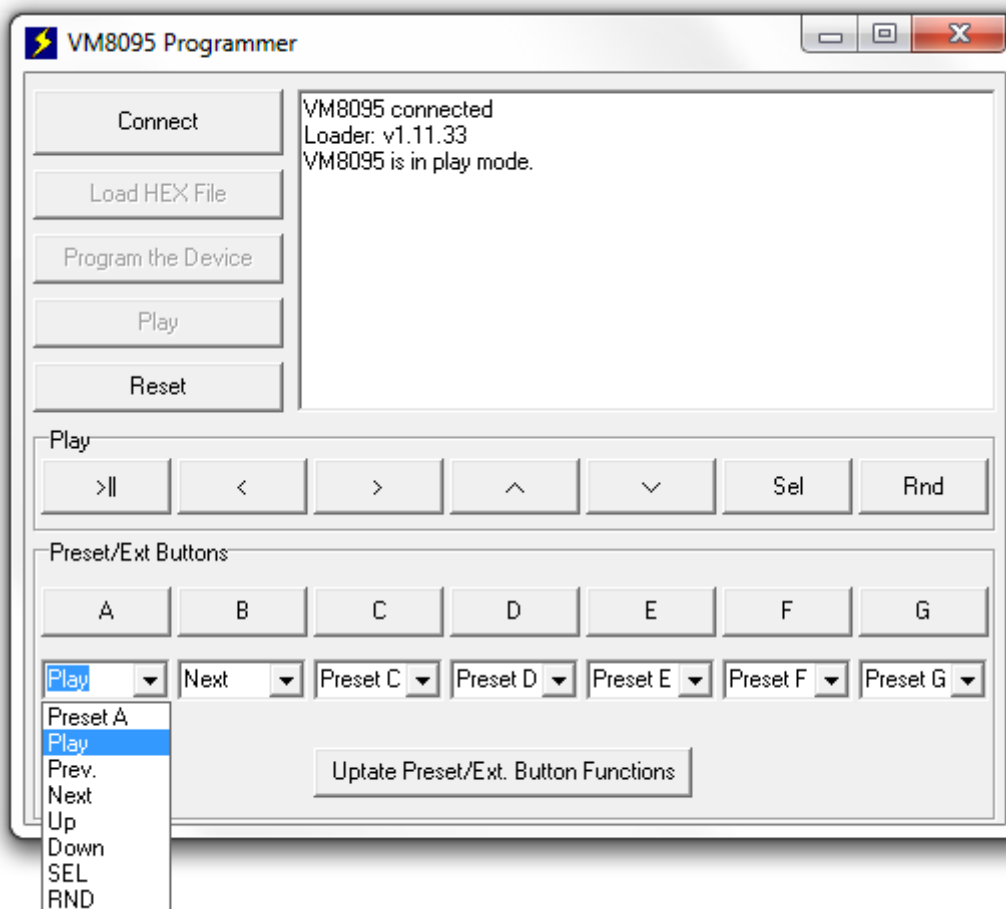
For mono output, mount a shunt on SK1.



Modifying the “preset” buttons A ... G

It is possible to assign different functions to the preset push buttons A ... G. These push buttons can also be controlled by external buttons that you connect using the included cable (see the chapter “Connection overview”).

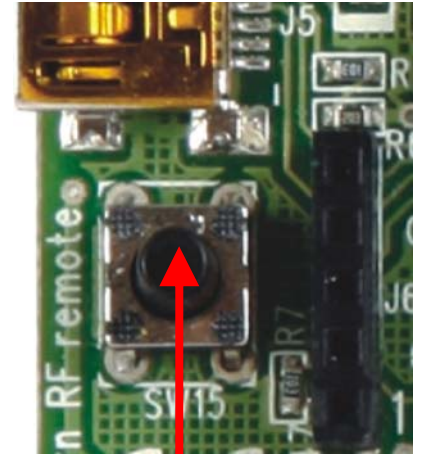
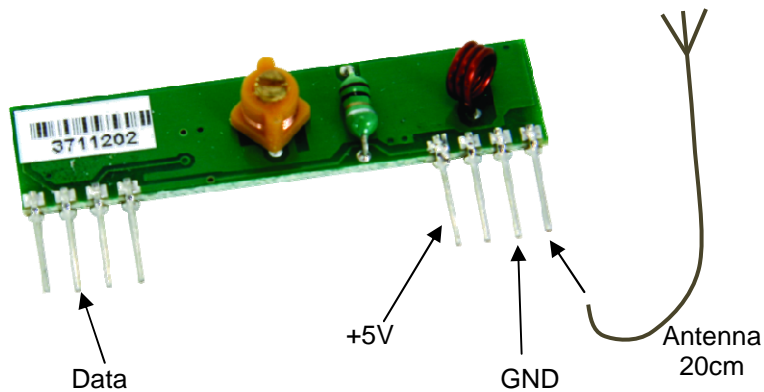
- 1- Download the VM8095 Programmer software from the product page on our website: www.velleman.eu
- 2- Power up the VM8095.
- 3- Connect the VM8095 to the PC using the included USB cable (check for the correct USB hardware installation).
- 4- Start the VM8095 Programmer software.
- 5- Click the “Connect” button in the programme, and check the VM8095 connection.
- 6- Select the required function for the buttons A to G.
- 7- Click the “Update Preset/Ext Button functions” button.
- 8- Check if the “Update complete” message appears.
- 9- When the message appears, the functions are programmed.



Learning a remote

1. Learning a RF remote (VM118R / K8058 / VM160DT / VM160T)

Learning a RF remote is only possible when the RF-receiver is mounted.
(art. RX433N).



"SW15"
Learn RF remote



Keep push button SW15 pressed while transmitting with the remote. The LCD display will blink twice to confirm that the remote is learnt

Attention: Learning a remote erase the previous saved remote.

2. Learning a IR remote (K8049)



- See section "mode selection" in the manual of K8049 for setting the remote on "MODE 4".
- The remote is now ready to be used.

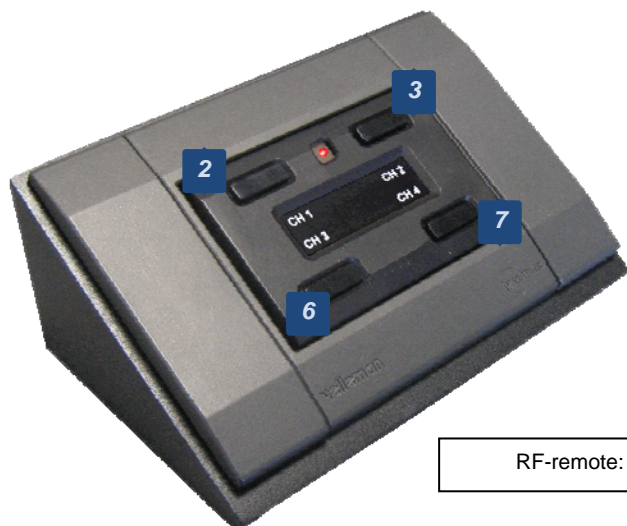
Keyboard Layout for optional remotes



RF-remotes: K8058 / VM118R
IR-remote : K8049



RF-remote: VM160T



RF-remote: VM160DT



4-channel IR remote: VM191

- 1 *Play / Pause*
- 2 *Volume Up*
- 3 *Volume down*
- 4 *Random*
- 5 *Power off*
- 6 *Next*
- 7 *Previous*
- 8 *Browse presets*

Sound & play modes

The MP3 player features several possible play modes and preset sound modes. The “play mode” is only available when a LCD-display is mounted!

1. Sound modes:



2. Play mode:



- **Play all:** play all folders
- **Play folder:** play only the selected folder
- **Repeat folder:** repeat the selected folder after the last played song
- **Repeat all:** repeat all folders after the last played folder
- **Shuffle:** play in random mode all songs of all folders. In this mode a song can be played several times.
- **Startup play on:** When the MP3 unit is powered off it will start automatically to play when powered on.
- **Startup play off:** When the MP3 unit is powered off it doesn't start automatically to play when powered on.

To select a play mode keep push button SW6 long pressed so that you come into the setup mode, press once shortly to go to the “play mode” folder. With the push buttons SW4 “volume up” en SW5 “volume down” you can choose the mode and confirm with SW6.

If you want this mode for next times after switching off the power you must place the MP3 shortly in sleep mode to save your settings.

3. Random mode:

All songs or the songs of the selected folder will randomly played once.

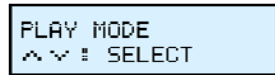


Alle folders:

- press long SW6 “select” to open the setup menu.
- Press short “SW6” for the play mode.
- choose the mode “play all” with push buttons SW4 (up) / SW5 (down)
- Confirm with a short press on SW6
- Press push button SW7 for random play

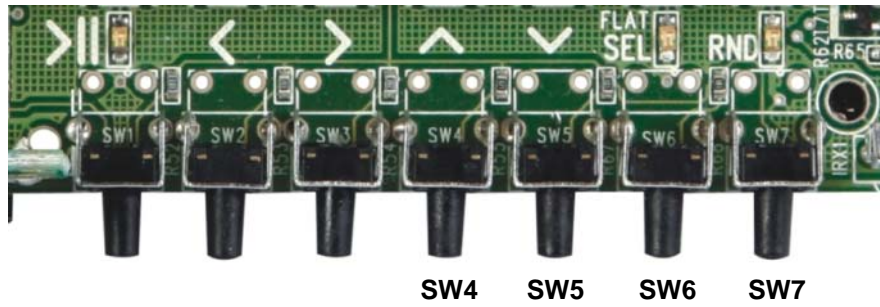


FOLDER
▲ ▼ = SELECT



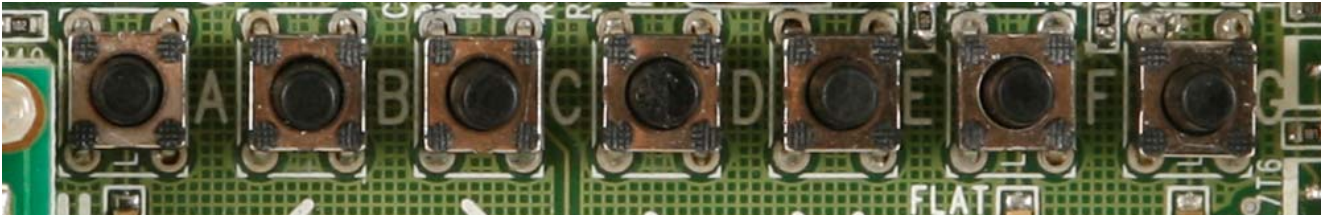
PLAY MODE
▲ ▼ = SELECT

Selected folder:



- **Select mode**
 - press long SW6 “select” to open the setup menu.
 - Press short “SW6” for the play mode.
 - choose the mode “play folder” with push buttons SW4 (up) / SW5 (down)
 - Confirm with a short press on SW6
- **Select folder**
 - press long push button SW6 “select” to open the setup menu.
 - Select the folder with push buttons SW4 (up) / SW5 (down)
 - Confirm with a short press on SW6
- **Press push button SW7 for random play**

Preset push buttons “A” – “B” – “C” – “D” – “E”



All preset push buttons will automatically be linked to a folder on the SD-card.

To do this it's necessary that the folders on the SD-card have the folder name: A, B, C, D and E, each folder have it's own music files.

By pressing on a preset push buttons you'll play the music files that are saved in the folder.

It's possible to re-assigned other folders to these preset push buttons

Procedure to re-assign a preset push button

First select a folder

- Press long push button SW6 “select” to open the setup menu.
- Select the folder with push buttons SW4 (up) / SW5 (down)
- Confirm with a short press on SW6

```
FOLDER
^ v = SELECT
```

Assign now the folder

- Play a song of the selected folder.
- Press push button SW1 to pause the MP3 player
- Press long on the preset button where you want to assigned the folder on it.
- The name of the preset button and the song of that folder appears on the LCD-display
- Led LD4 will blink fast to confirm if no LCD is mounted, if LCD display is mounted a message appear on the screen (see. Fig.)

```
A: preset folder
ROCK
```

NEW CATALOGUE

The new Velleman Projects catalogue is now available.
Download your copy here!

www.velleman.eu



VELLEMAN PROJECTS NEWSLETTER

Subscribe to our newsletter!



Velleman nv, Legen Heirweg 33, 9890 GAVERE

© 2012