

承

認

書

SPECIFICATION FOR APPROVAL

客 戶  
CUSTOMER

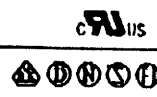
**C E I**

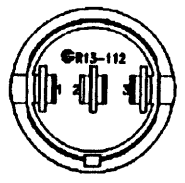
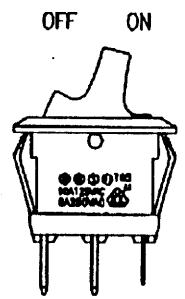
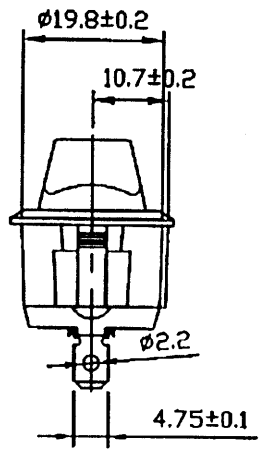
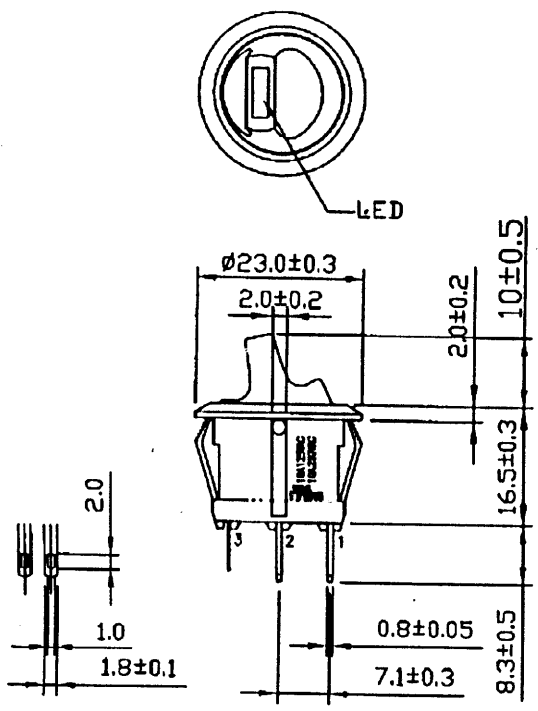
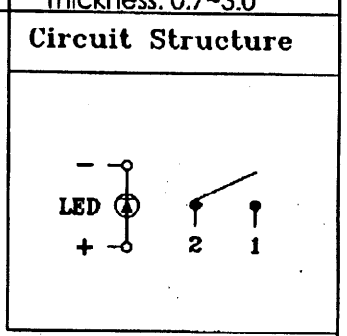
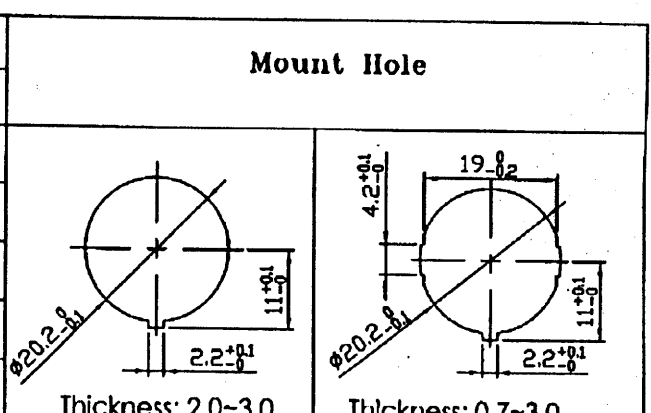
品 名  
MODEL NO.

**R13-112LP-02**

承 認 印

APPROVED BY

Rating	16A 125VAC	
	10A 250VAC	
	10A 125VAC	
	6A 250VAC	
Contact R	50m ohm Max.	
Insulation R	DC 500V 100M ohm Min.	
Dielectric Strength	AC 1500V 1 minute	
Operation Tempature	-20°C~85°C	
Circuit	4P SPST ON-OFF (LED)	



CB\R13\R13-112LP-02

Date	Name	Descriptions			NO
Drawing	Check	Approval	SCI No.	Model Name	ROCKER SWITCH
曹盈芳	李作山	董	Customer No.	Model No.	R13-112LP-02
11/10/04	11/10/04	173004	Unit	mm	
