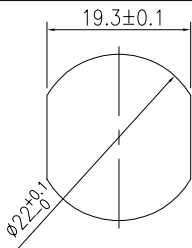
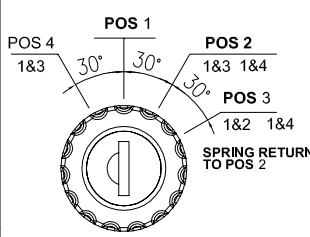
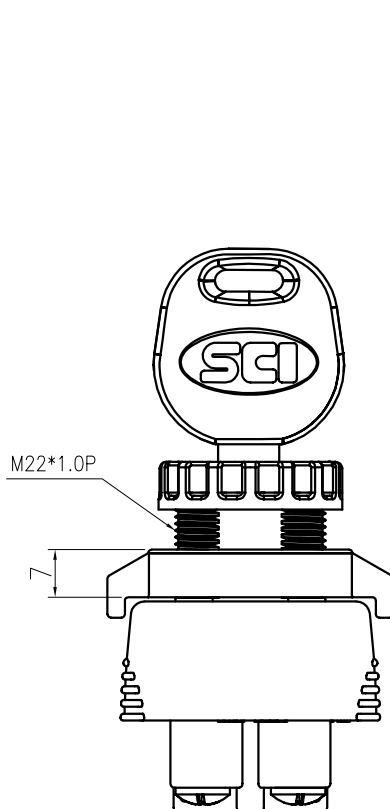
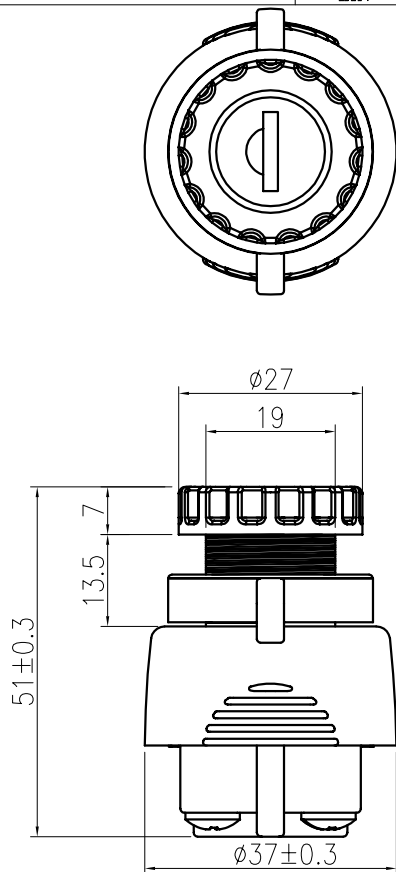
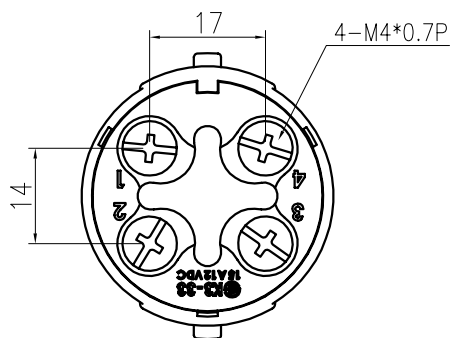


Rating	15A Max. 12VDC		Circuit Diagram	
Contact Resistance	50M ohm Max.			
Insulation Resistance	DC 500V 100M ohm Min.			
Dielectric Strength	AC 1000V 1 minute			
Operation Temperature	-20°C~85°C			
Switch Function	4P ON - OFF - ON - momentarily ON turn left - Key IN - right - right EIN - AUS - EIN - Taster	Thickness:5.5mm max.		



Schlüssel lässt sich  
nur in OFF-Position  
abziehen.



#### MATERIAL:

Frame: PBT (94V-0), Black

Bottom: PBT (94V-0), Black

Terminals: Copper Alloy

Contacts: Copper Alloy+AgSn02In03

									△
									△
Date	Name	Description							NO
Drawn	Checked	Approved	SCI BOM No.	1840111	Model Name	KEY SWITCH			
C.J.Chan			Customer No.		Model No.	K3-33C1-07		REV.	
2/2/'10			Unit	mm	SHIN CHIN INDUSTRIAL CO., LTD.				0