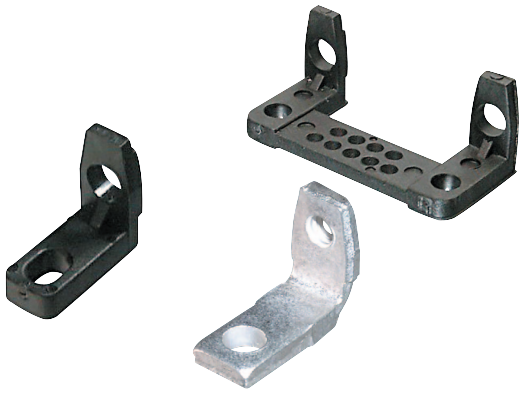


**Winkel für D-Sub-Steckverbinder**  
**Brackets for D-Sub-connectors**



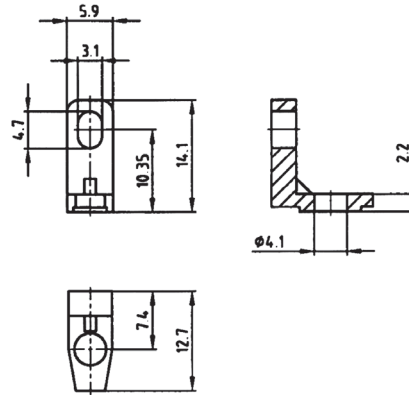
**Merkmale**

Diese Winkel für D-Sub Steckverbinder sind in Kunststoff (mit & ohne Zentrierung) und Metall (ohne Zentrierung) erhältlich.

**Features**

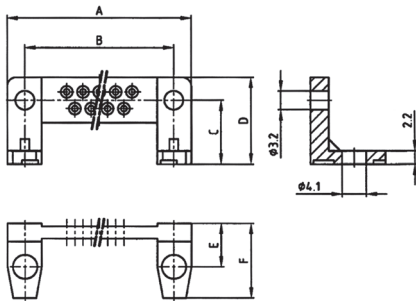
These brackets for D-Sub miniature connectors are available in plastic (with & without centers) and metal (without centers)

**AWK**

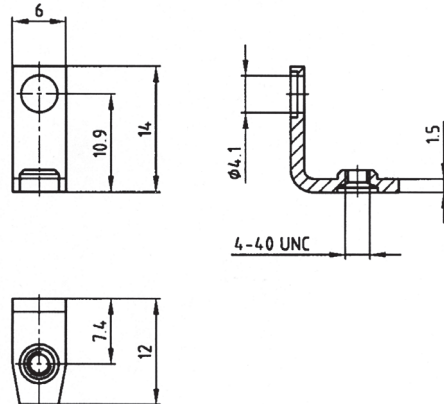


Dimensions						
No. of contacts	A	B	C	D	E	F
09	30.9	25.0	10.70	14.6	7.4	12.7
15	39.2	33.3	10.70	14.6	7.4	12.7
25	53.0	47.0	10.70	14.6	7.4	12.7
37	69.4	63.5	10.70	14.6	7.4	12.7
50	67.1	61.1	11.94	14.6	8.8	14.0

**ABW**



**AWMS**



Bestellcode : **ABW - x**  
Ordercode :

Bitte „x“ durch die unten geeignete Option ersetzen  
Please replace „x“ with appropriate option listed below

1.

**Polzahl**  
09, 15, 25, 37, 50

**No. of contacts**  
09, 15, 25, 37, 50

Bestellcode : **AW - x - 9/50**  
Ordercode :

Bitte „x“ durch die unten geeignete Option ersetzen  
Please replace „x“ with appropriate option listed below

1.

**Winkel**  
K -Kunststoffwinkel ohne Zentrierung  
MS -Metallwinkel ohne Zentrierung

**Bracket**  
K -Plastic bracket without centers  
MS -Metal bracket without centers

D-Sub / Hoods  
Centronics

Multiflex

Modular

USB

Switches

Powercords  
Powersockets

MiniDIN

DIN4161x  
Hardmetric

Sockets + Strips  
Jumper

1

2

3

4

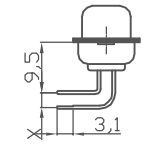
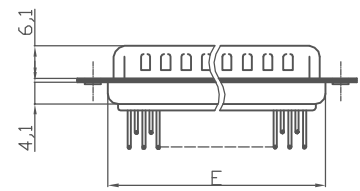
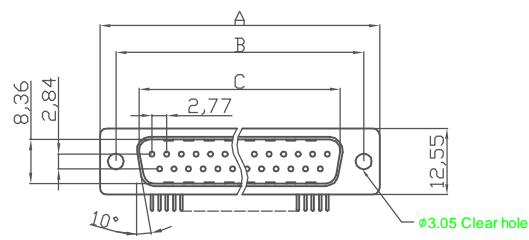
5

6

7

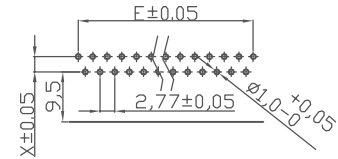
A

A



X = 2.54 or 2.84 mm

9.4 mm Footprint Machined Pin(W/O Rear Cover)



X = 2.54 or 2.84 mm  
Recommended PCB Layout  
Female/Male

NOTES:

MATERIAL

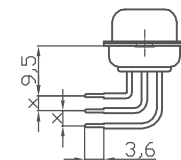
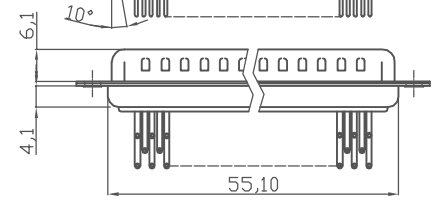
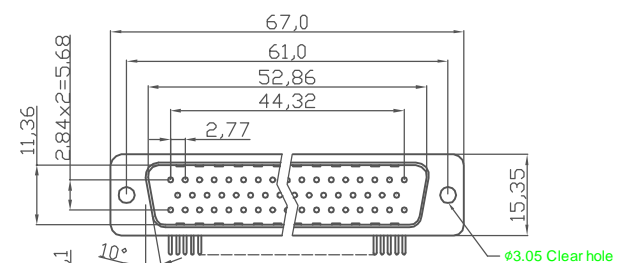
- 1. Insulator Material: Glass-filled thermoplastic PBT, UL94V-0
- 2. Contact Material: Copper alloy
- 3. Shell : Steel, 100 μ" Tin Over 50μ" min Copper

ELECTRICAL

- 1. Current Rating : 5AMP
- 2. Voltage Rating : 250V AC/rms 60Hz
- 3. Contact Resistance: 20mΩ Max at 1 AMP DC
- 4. Insulation Resistance: 1000MΩ at 500 VDC
- 5. Withstand Voltage: 1000V AC/rms 60Hz for 1 minute

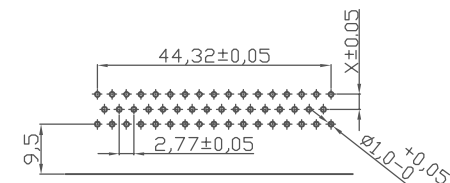
D

D



X = 2.54 or 2.84 mm

50 Positions Machined Pin(W/O Rear Cover)



X = 2.54 or 2.84 mm  
Recommended PCB Layout  
Female/Male

Dimensions

Positions	A	B	C	E
09	30.81	24.99	16.92	11.08
15	39.20	33.30	25.25	19.39
25	53.05	47.04	38.96	33.24
37	69.40	63.50	55.42	49.86

G

G

RoHS compliant

Unit: mm



File No.: E198287

Scale	1:1					Date	Name	Customer-No.
TOLERANCE						Drawn	25.12.2008	Dean
X.	±0.38					Approved	25.12.2008	Hellwig
X.X	±0.25							
X.XX	±0.13							
DIM	TOL							
X.°	±3°							
X.X°	±1.0°	①	Drawn	25.12.2008	Dean			
Angle	TOL	Id.	Modification	Date	Name			



ASSMANN WSW-No. <b>A-DS XX AA/Z</b>	
Drawing-No.	
<b>ASS 3250 CO</b>	rev01
Replace	Sheet

H

H

1

2

3

4

5

6

7