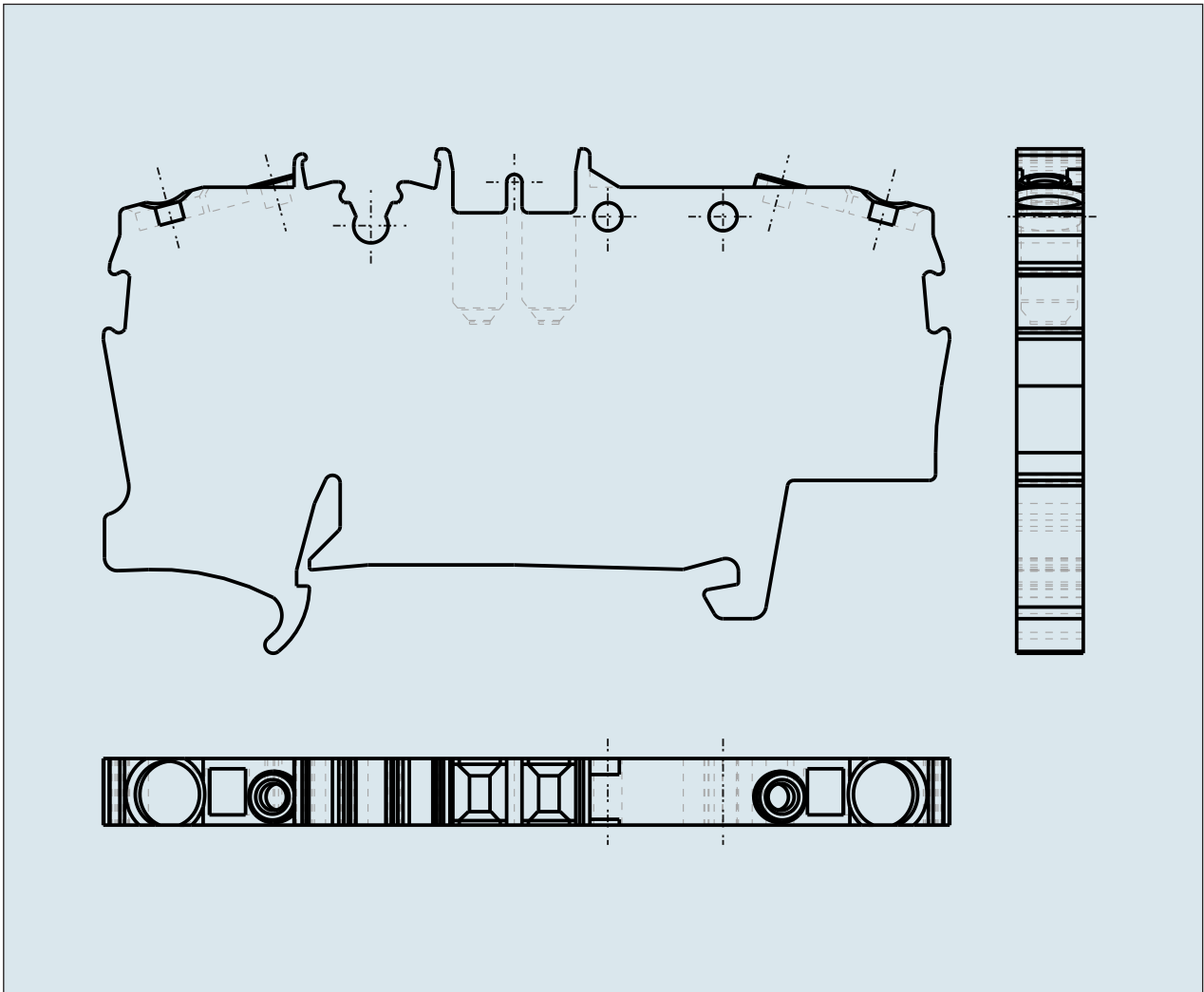
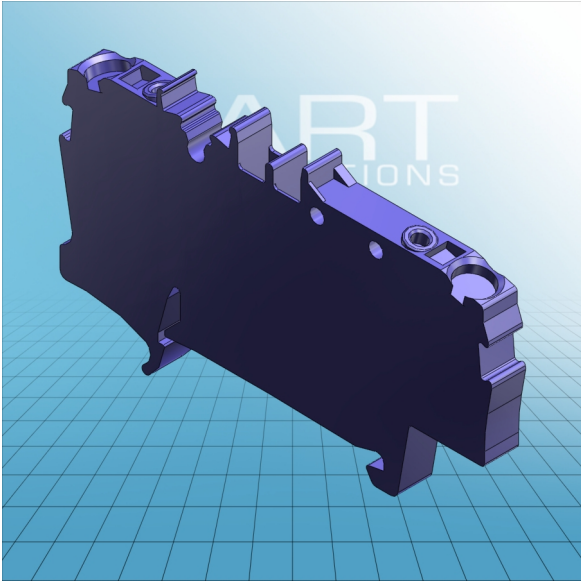


2-CONDUCTOR THROUGH TERMINAL BLOCK WITH TESTING FACILITY

same profile as 2-conductor
disconnect terminal block with



**2-CONDUCTOR THROUGH TERMINAL
BLOCK WITH TESTING FACILITY**
same profile as 2-conductor
disconnect terminal block with
movable knife disconnect
2002-1601

ITEM-NO. (ITEM-NO.)	2002-1604
Cross section1 (Cross section / mm²)	0.25 - 2.5 (4)
Cross section2 (Cross section / AWG)	22 - 12
Strip length (Strip length / mm)	10 - 12
Measured voltage (Measured voltage / V)	400
Measured shock voltage (Measured shock voltage / kV)	6
Pollution degree (Pollution degree)	3
Current intensity (Current intensity / A)	16
Height (Height / mm)	33
Width (Width / mm)	5.2
Depth (Depth / mm)	66.5
No. of connection Points (No. of connection Points)	2
No. of potentials (No. of potentials)	1
COLOR (COLOR)	blau
WEIGHT (WEIGHT / g)	7.9