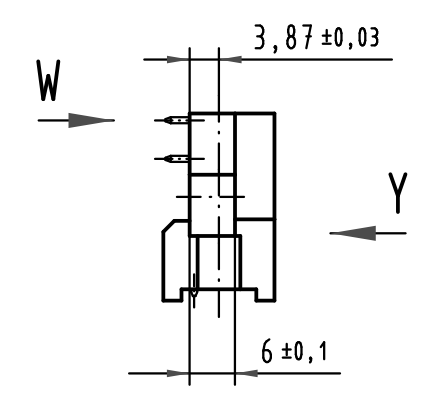
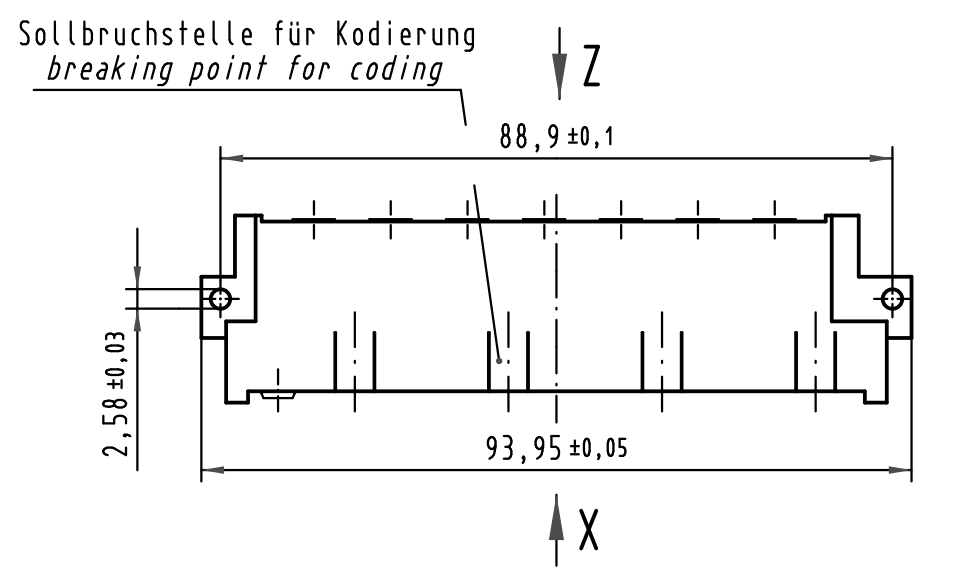
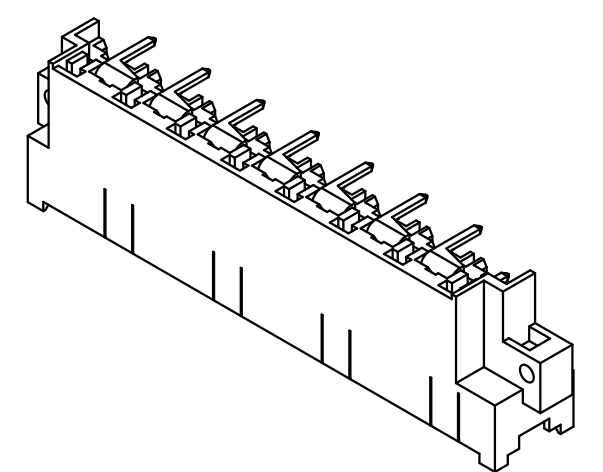
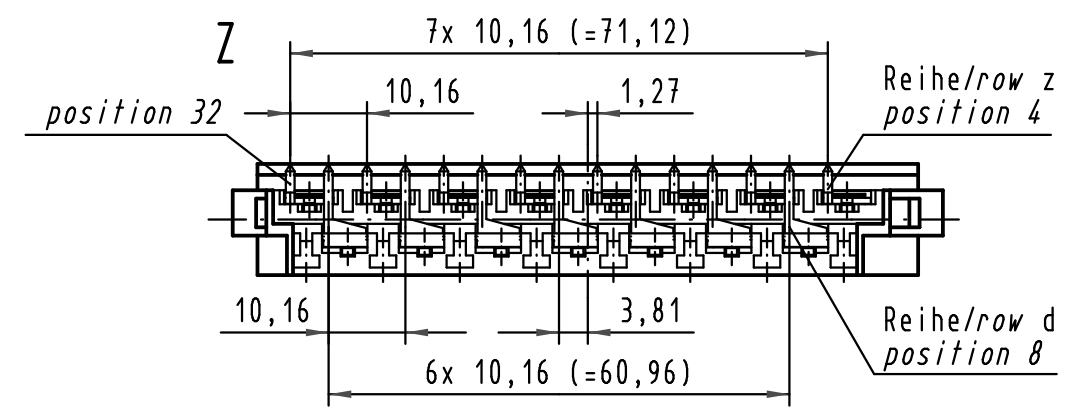
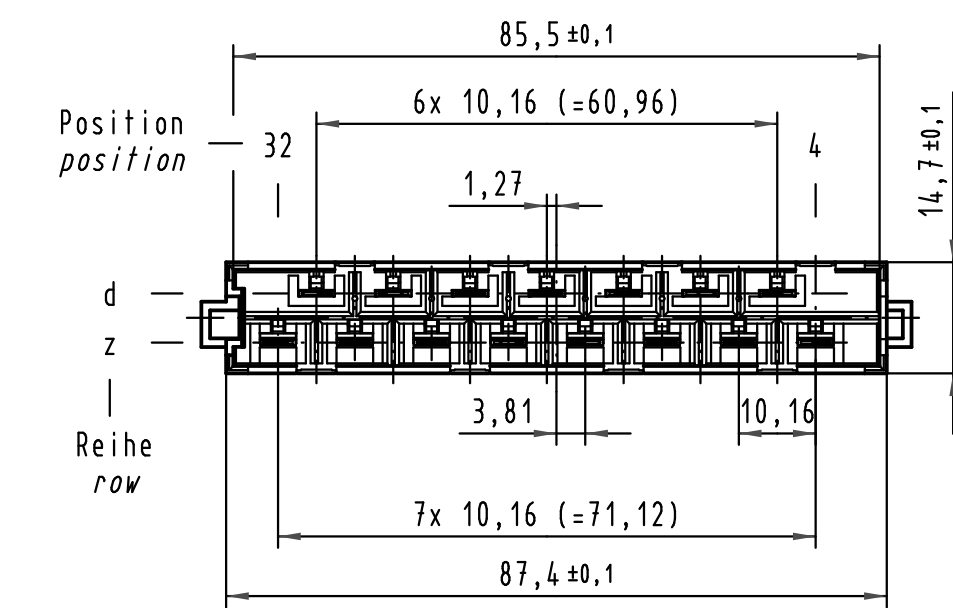
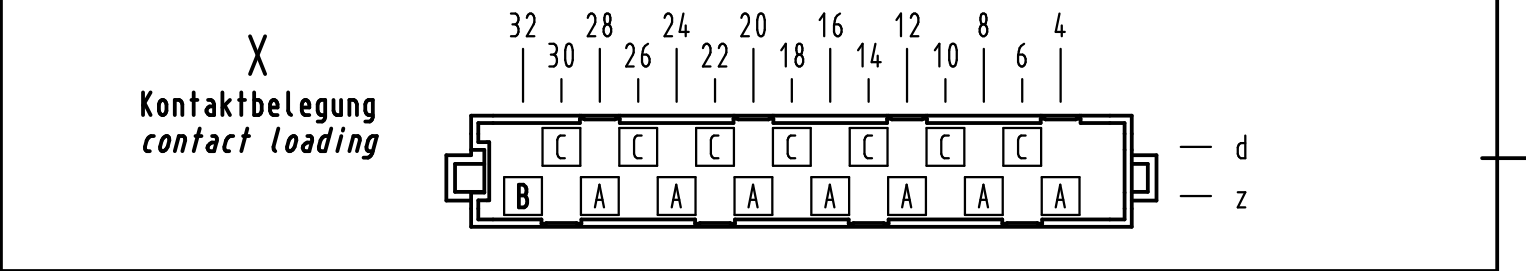
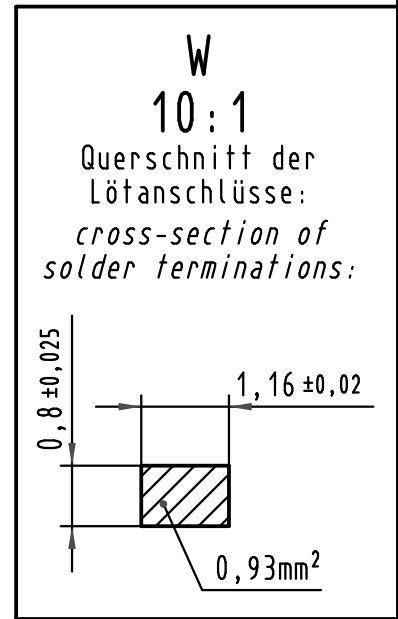
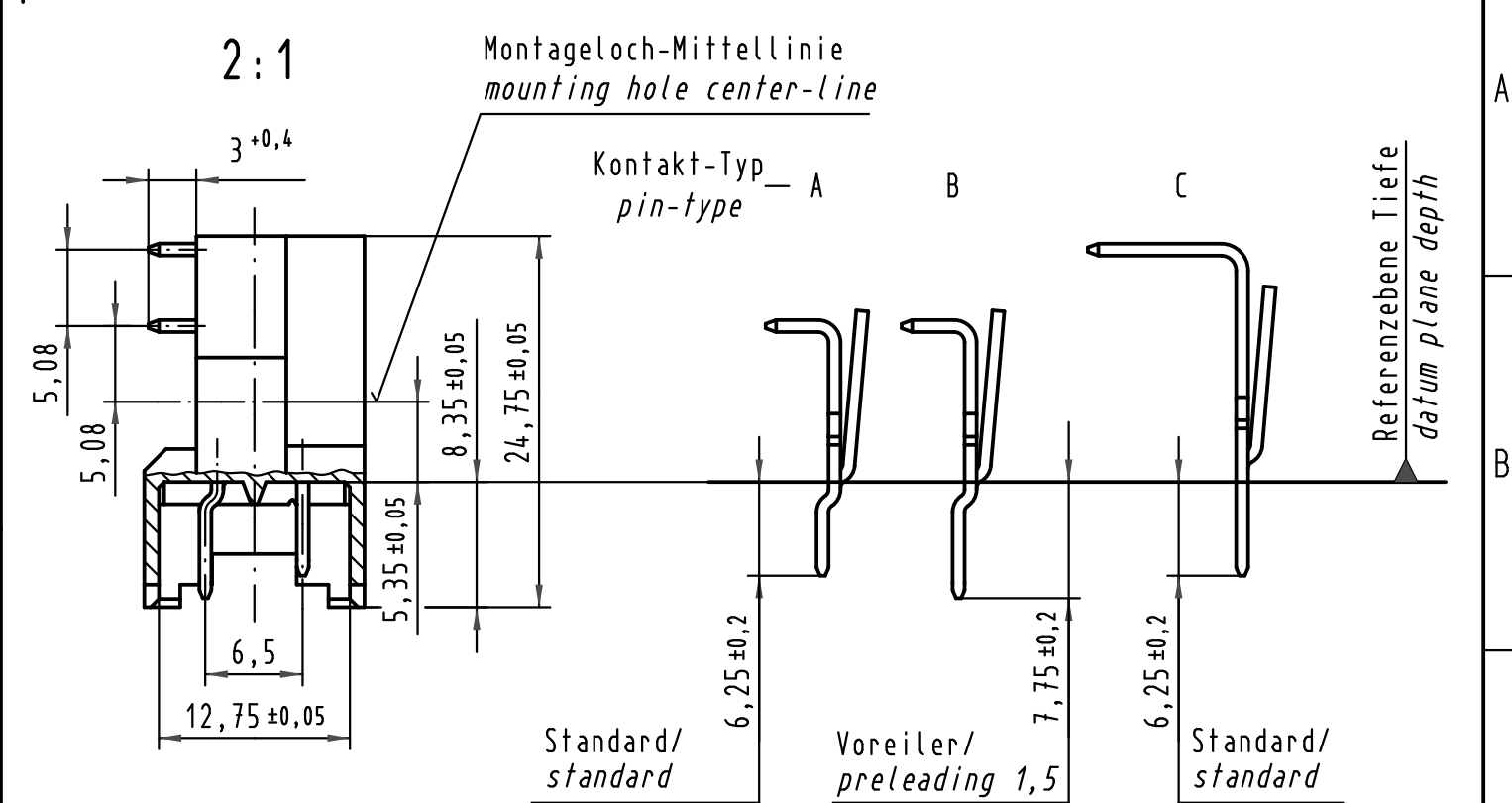
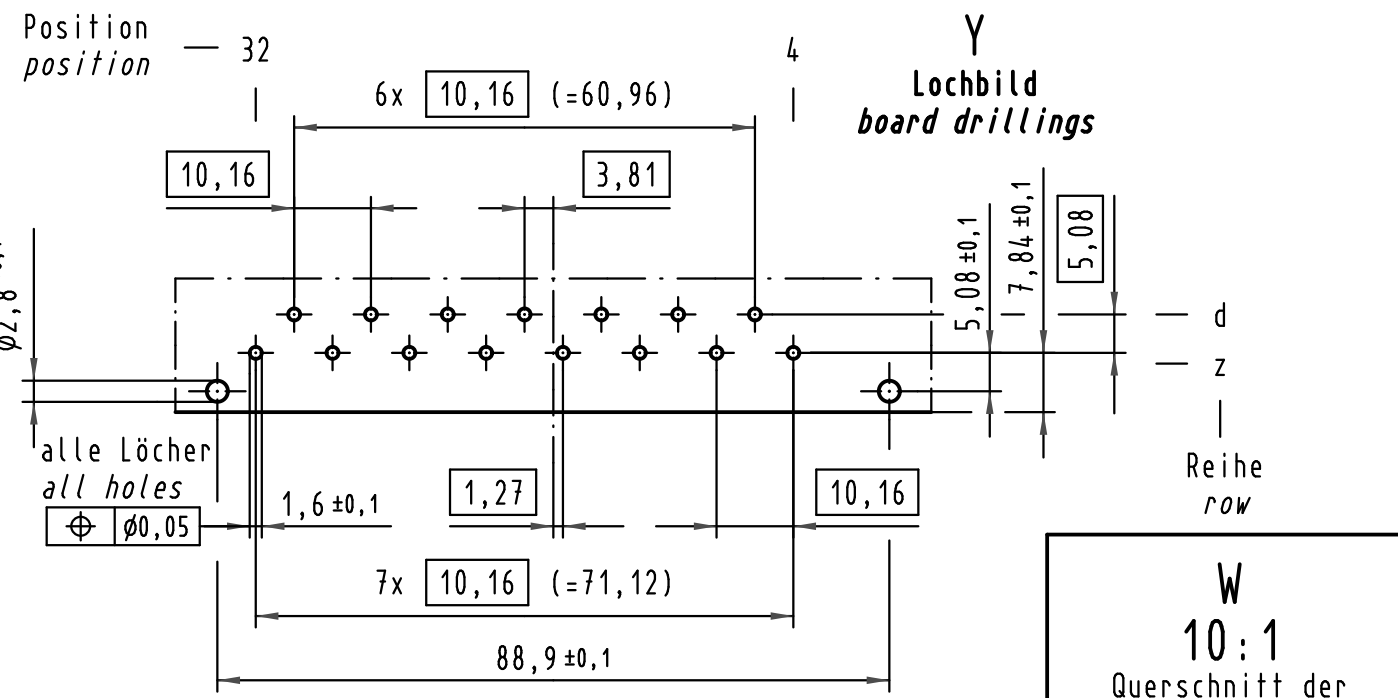
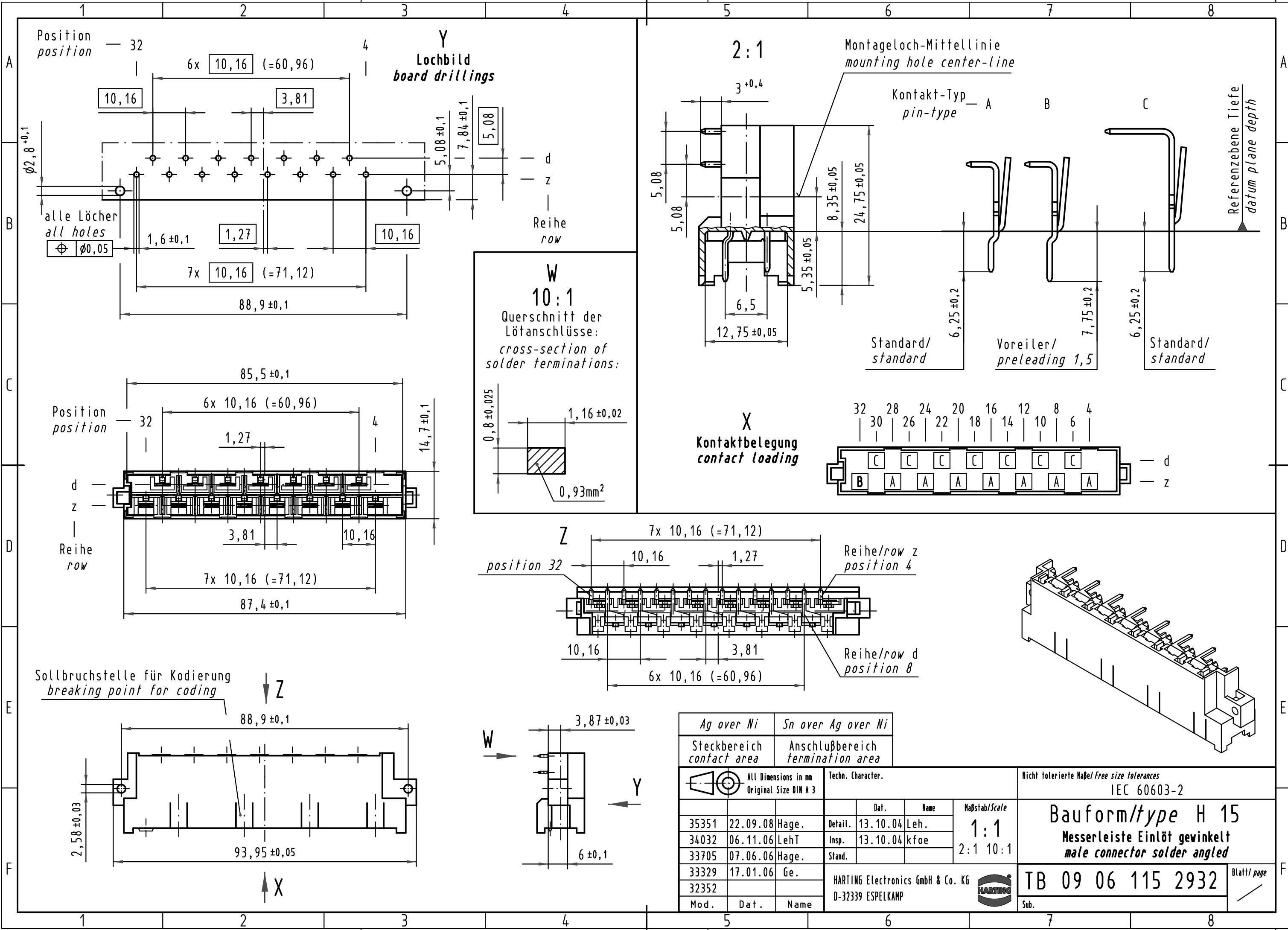


Alle Rechte vorbehalten/ All rights reserved



Ag over Ni		Sn over Ag over Ni		Techn. Character.		Nicht tolerierte Maß/Free size tolerances IEC 60603-2	
Steckbereich contact area		Anschlußbereich termination area				Bauform/type H 15 Messerleiste Einlöt gewinkelt male connector solder angled	
All Dimensions in mm Original Size DIN A 3				Dat.		Name	
35351 22.09.08 Hage.				Detail.		13.10.04 Leh.	
34032 06.11.06 LehT				Insp.		13.10.04 kfoe	
33705 07.06.06 Hage.				Stand.			
33329 17.01.06 Ge.							
32352				HARTING Electronics GmbH & Co. KG D-32339 ESPELKAMP			
Mod.		Dat.		Name		Sub.	
						TB 09 06 115 2932	
						Blatt/page	