

Technical Discussion

LattePanda Alpha & Delta

Post Reply



Queenie.Le

2019-01-11 10:46:31

30083 Views

11 Replies

Here I will share my Titan case assembly process with you guys.

Register

Login

What you received: LattePanda Alpha/Delta Board and Titan Case.



1. First, remove the two wings of the upper half of Titan case.

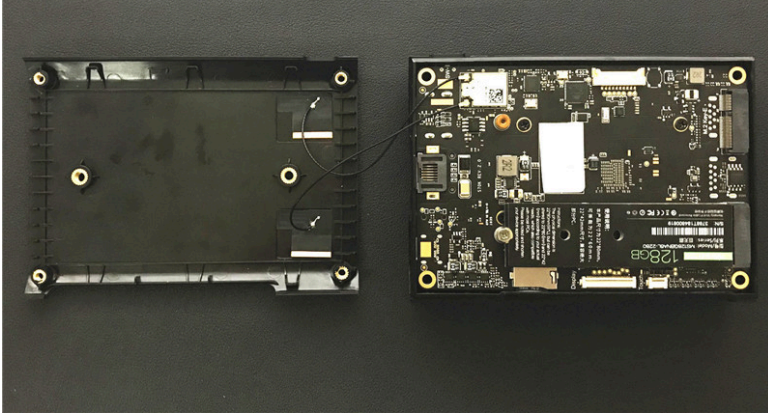
(Tip: It would be easier to disassemble them by pulling away from the middle of the wings)



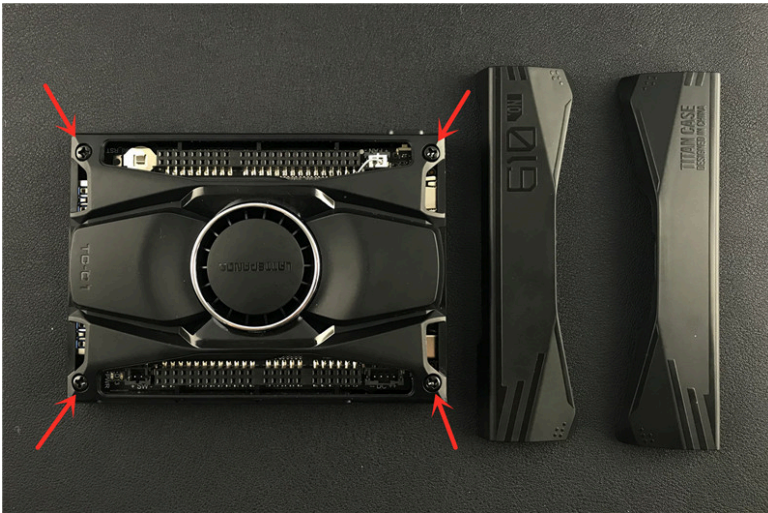
2. Then put your LattePanda Alpha/Delta into Titan case.

(Tip 1: It could be easier if you put the side with audio jack into the case first.

Tip 2: In this step, you can install the antenna, SSD, eDP and Touch connectors before closing the lower half of Titan case, and the rest



3. After the upper and lower half of Titan case are installed, screw the four corners.



4. Then buckle the wings and complete the installation:



5. After installation, the ports of each side are as follows:

