



# 40mm wide limit switches

## Product overview

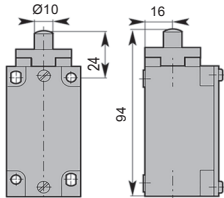
- 40mm width
- Double insulated plastic
- Plastic option to IP65
- Metal option to IP66
- Snap action contacts
-   approve



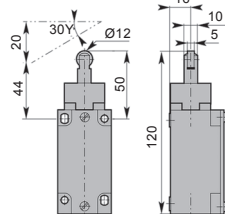
SPECIFICATION	
Rating	500V
Shock withstand	50g
Impulse withstand voltage	6kV
Working temperature	-25°C to +70°C
Switching frequency	3600 cycles/h
Load factor	0.5
Short circuit protection	10A gG fuse

IP66 METAL CASING	IP65 PLASTIC CASING	PLUNGER TYPE	MAX ACTUATION SPEED	ACTUATION / NC OPERATION
CE41.00.AM	CE41.00.AP	Plain plunger	0.5ms <sup>-1</sup>	30N/45N
CE41.00.BM	CE41.00.BP	Steel roller plunger	0.3ms <sup>-1</sup>	22N/40N
CE41.00.HM	CE41.00.HP	Adjustable rod lever	1.5ms <sup>-1</sup>	0.15Nm/0.30Nm
CE41.00.GM	CE41.00.GP	Adjustable rod lever	1.3ms <sup>-1</sup>	0.15Nm/0.30Nm
CE41.00.EM	CE41.00.EP	Roller lever nylon	1.5ms <sup>-1</sup>	0.15Nm/0.30Nm
CE41.00.EM/50	CE41.00.EP/50	Rubber roller lever	1.5ms <sup>-1</sup>	0.15Nm/0.30Nm
CE41.00.TM	CE41.00.TP	Pull action with ring	0.5ms <sup>-1</sup>	25N/-
CE41.00.FM	CE41.00.FP	Adjustable roller lever	1.5ms <sup>-1</sup>	0.15Nm/0.30Nm
CE41.00.FM/50	CE41.00.FP/50	Adjustable rubber roller lever	1.5ms <sup>-1</sup>	0.15Nm/0.30Nm
CE41.00.KM	CE41.00.KP	One way roller	1.5ms <sup>-1</sup>	12N/40N
CE41.00.LSM	CE41.00.LSP	Stainless steel spring	1.0ms <sup>-1</sup>	0.18Nm/-
CE41.00.LM	CE41.00.LP	Stainless steel spring multi-directional	1.0ms <sup>-1</sup>	0.18Nm/-

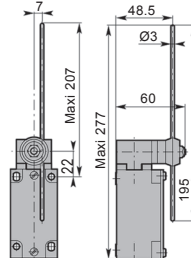
Plain plunger



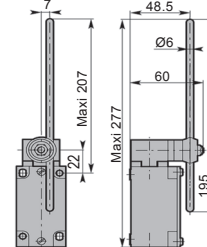
Steel roller plunger



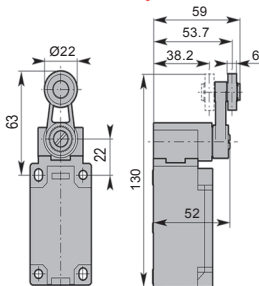
Adjustable rod lever



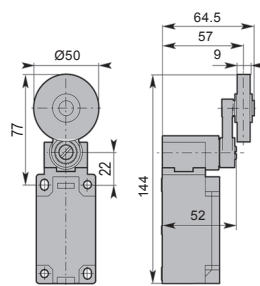
Adjustable rod lever



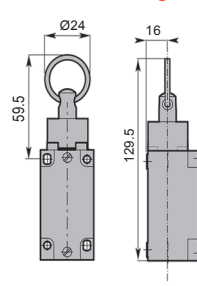
Roller lever nylon



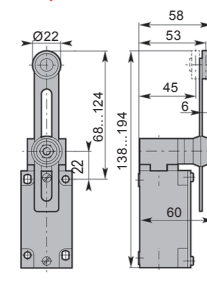
Rubber roller lever



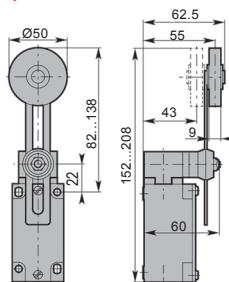
Pull action with ring



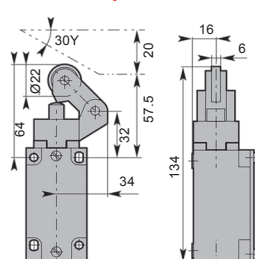
Adjustable roller lever



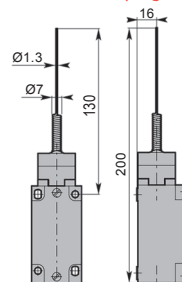
Adjustable rubber roller lever



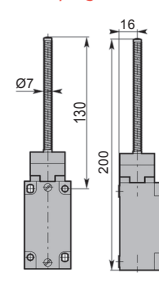
One way roller



Stainless steel spring



Stainless steel spring multi-directional



SWITCH

