

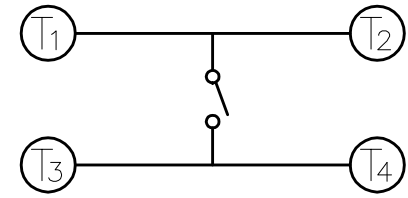
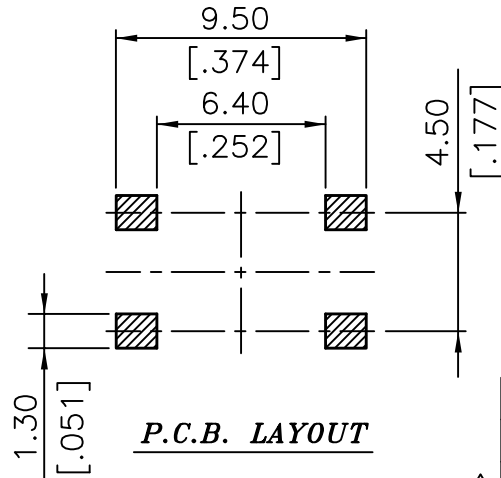
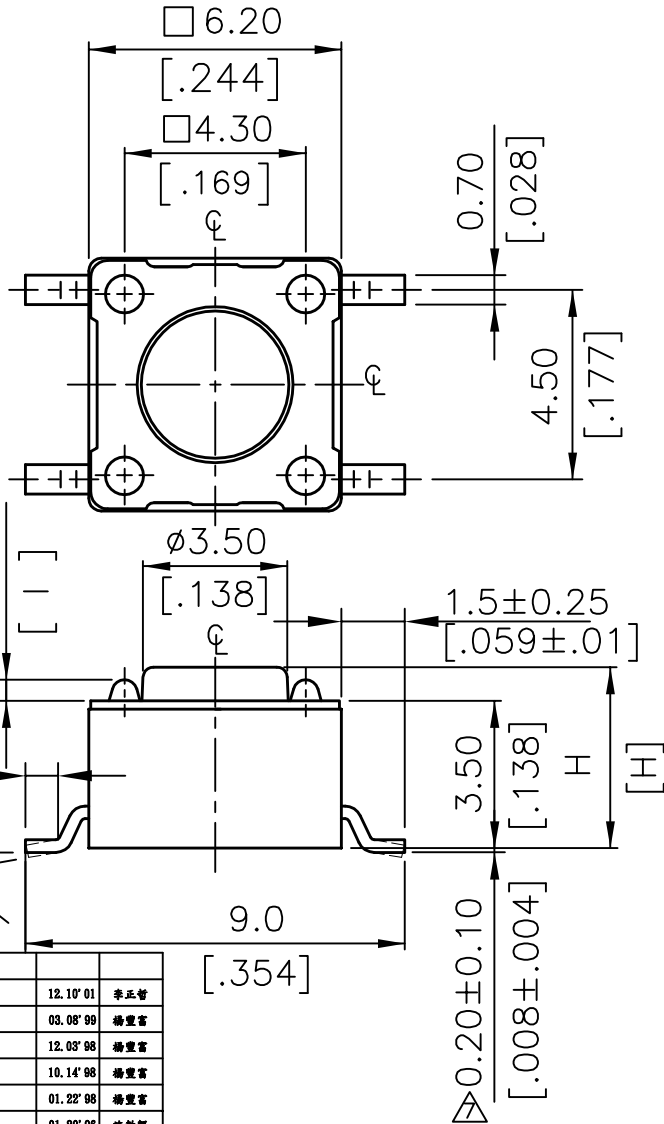
Tactile switches

Order code	Manufacturer code	Description
78-1130	DTSM-61K	1.3MM SMD 6X6MM TACTILE SWITCH

Tactile switches	Page 1 of 2
The enclosed information is believed to be correct, Information may change 'without notice' due to product improvement. Users should ensure that the product is suitable for their use. E. & O. E.	Revision A 04/07/2003

NOTE:

1. ALL DIMENSIONS ARE IN MILLIMETERS, BRACKETED DIMENSIONS ARE IN INCHES.
2. GENERAL TOLERANCES MAX.±0.20mm.
3. MATERIAL & □ : SEE PAGE 3 OF 3.



CIRCUIT DIAGRAM

DTSM-62~66□	0.6 MAX	.0236MAX
DTSM-6 1□	0.5 MAX	.0197MAX
PROD. NO.	I	INCHES.

Δ DTSM-6 6□	13.0 [0.512]
DTSM-6 5□	9.5 [0.374]
DTSM-6 3□	Δ 7.0 [0.275]
DTSM-6 2□	5.0 [0.197]
DTSM-6 1□	4.3 [0.169]
PROD. NO.	H

DTSM-6*	先銀壓後沖, 雙面銀壓(Ag/0.3uM MIN)
Δ DTSM-6*-G1	先沖後鍍, (Ag/0.5uM MIN)

J	依工變03048變更		
I	變更腳合規格	12.10'01	李正智
H	修改鍍銀規格及刪除64□規格	03.08'99	楊登富
G	修訂 Δ 標示尺寸	12.08'98	楊登富
F	增訂先沖後鍍銀規格	10.14'98	楊登富
E	修訂 Δ 腳份尺寸	01.22'98	楊登富
D	增訂DTSM-66, H=13mm	01.20'98	施敬群
C	增訂0'-4'	10.03'94	施敬群
B	修訂DTS-63, H=7.3 → H=7.0	09.18'94	施敬群
A	DWG. REL.	07.08'94	施敬群
ZONE	REV	DESCRIPTION	DATE
		APPD.	

APPD:	Q'TY:	圓達實業股份有限公司 DIPTRONICS MANUFACTURING INC.	PART NAME:
CHKD:	SCALE: 8 : 1		TACTILE SWITCH SMT TYPE 6X6
DR:	REV: J	UNITS: mm	DWG NO:
DESIGN:		PART NO: DTSM-6□□	FINISH:
			R D 5 P 6 M