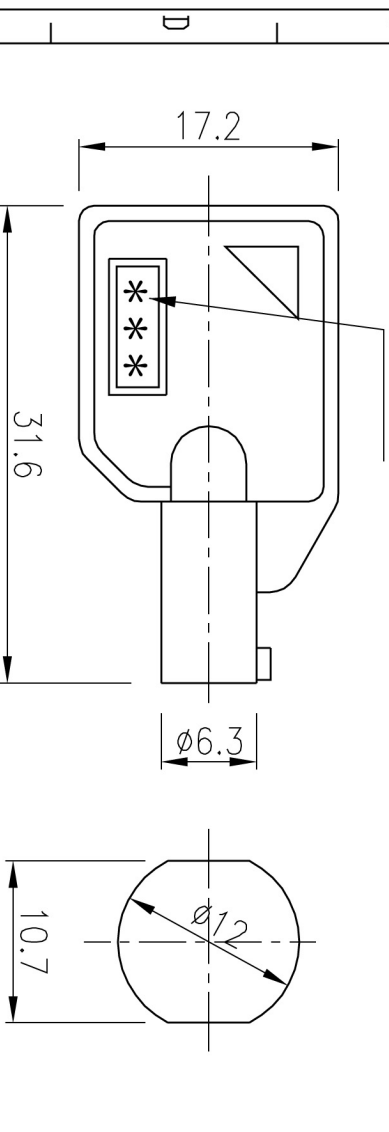
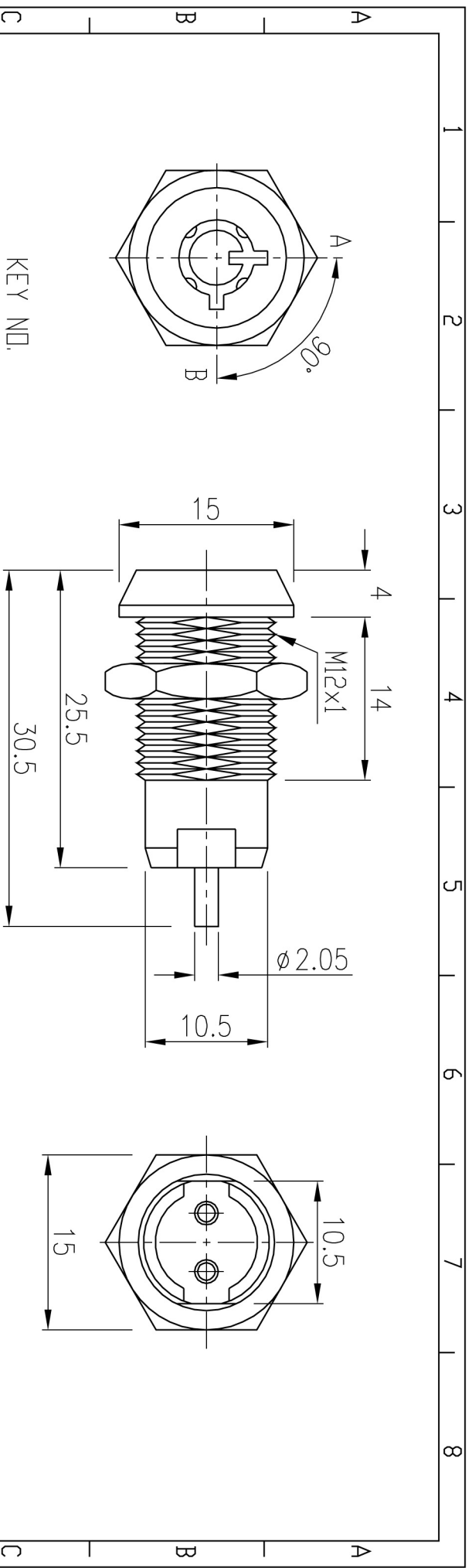


Order code	Manufacturer code	Description
79-0310	n/a	n/a

	Page 1 of 2
The enclosed information is believed to be correct, Information may change 'without notice' due to product improvement. Users should ensure that the product is suitable for their use. E. & O. E.	Revision A 04/07/2003



Recommended hole size

- NOTES:
- * Zinc alloy die cast housing and cylinder, chrome plated.
 - * Zinc alloy keys, chrome plated.
 - * Silver plated contacts and terminals.
 - * 2 positions (off-on) 2 Terminals.
 - * 200 Combinations available.
 - * Rating: 1A 125VAC, 0.5A 250VAC.



DESCRIPTION KEYLOCK SWITCH			
PART NO.	S106-2		
MATERIAL	.		
NOTE	.		
APPROVED BY	CHECKED BY	DRAWN BY	
TOLERANCES	\varnothing	UNIT	SCALE
.04 .10 .15 .20 .30 .40 .50 .60 .80 1.00	mm	2:1	

REV. NO.	COORDINATES	WAS	NEW	DATE	BY	REV.	A	WT.	9	DATE	06.08.05
1			4	5		6			7		8