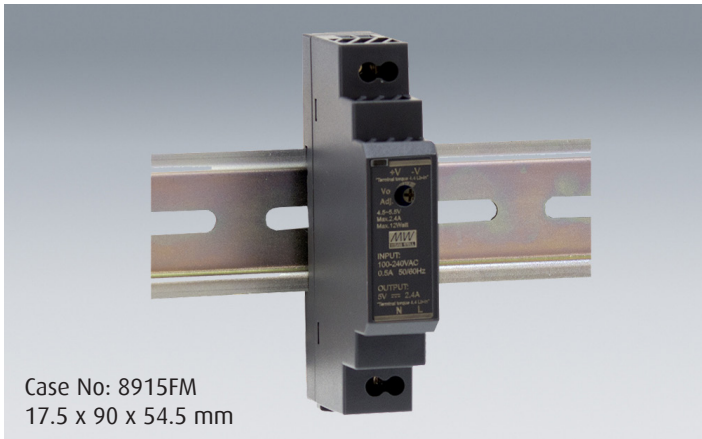


HDR-15 Series

15W Ultra Slim Step DIN Rail Power Supply



Case No: 8915FM
17.5 x 90 x 54.5 mm

Features

- Ultra slim design with 17.5mm (15U) width
- Universal input 85~264VAC (277VAC available)
- No load power consumption <0.3W
- Isolation class II
- Pass LPS (Limited power source)
- DC output voltage adjustable
- Protections: Short Circuit / Overload / Over voltage
- DIN rail TS-35/7.5 or 15 mountable
- Cooling by free air convection
(working temperature: -30 ~ +70°C)
- Led indicator for power on
- 3 years warranty



Specification

| | | | | | | |
|--------------|---------------------------------|------------------------------------------------------------------------------------------------------------------------------------|------------------|------------------------------------|------------------|------------------|
| INPUT | Voltage | 85 ~ 264VAC (277VAC available) | | 120 ~ 370VDC (390VDC available) | | |
| | Frequency | 47 ~ 63 Hz | | | | |
| | Efficiency | 80% | 85% | 85.5% | 86% | 87% |
| | AC Current (Typ.) | 0.5A/115VAC | | 0.25A/230VAC | | |
| | Inrush Current (Typ.) | Cold Start 25A/115VAC | | 45A/230VAC | | |
| OUTPUT | MODEL No. | HDR-15-5 | HDR-15-12 | HDR-15-15 | HDR-15-24 | HDR-15-48 |
| | Voltage | 5V | 12V | 15V | 24V | 48V |
| | Rated Current | 2.4A | 1.25A | 1A | 0.63A | 0.32A |
| | Current Range | 0~2.4A | 0~1.25A | 0~1A | 0~0.63A | 0~0.32A |
| | Rated Power | 12W | 15W | 15W | 15.2W | 15.4W |
| | Ripple Noise MAX. | 80mVp-p | 120mVp-p | 120mVp-p | 150mVp-p | 240mVp-p |
| | Voltage Adjustment Range | 4.5~5.5V | 10.8~13.8V | 13.5~18V | 21.6~29V | 43.2~55.2V |
| | Voltage Tolerance | ± 2.0% | ± 1.0% | ± 1.0% | ± 1.0% | ± 1.0% |
| | Line Regulation | ± 1.0% | ± 1.0% | ± 1.0% | ± 1.0% | ± 1.0% |
| | Load Regulation | ± 1.0% | ± 1.0% | ± 1.0% | ± 1.0% | ± 1.0% |
| | Setup Rise Time | 2000ms, 80ms / 230VAC | | 2000ms, 80ms / 115VAC at full load | | |
| | Holdup Time (Typ.) | 30ms / 230VAC | | 12ms / 115VAC at full load | | |
| PROTECTION | Over Load | 110~145% rated output power Protection Type: Constant current limiting, recovers automatically after fault condition is removed | | | | |
| | Over Voltage | 5.75 ~ 6.75V | 14.2 ~ 16.2V | 18.8 ~ 22.5V | 30 ~ 36V | 56.5 ~ 64.8V |
| ENVIRONMENT | Working Temp | -30~+70°C (Refer to "Derating Curve") | | | | |
| | Working Humidity | 20~90% RH non-condensing | | | | |
| | Storage Temp., Humidity | -40~ +85°C, 10~95% RH non-condensing | | | | |
| | Temp. Co-efficient | ±0.03% / °C (0~50°C) RH non-condensing | | | | |
| | Vibration | 10~500Hz, 2G 10min./1cycle, 60 min. each along X, Y, Z axes; mounting: compliance to IEC60068-2-6 | | | | |
| | Operating Altitude | 2000 meters | | | | |
| SAFETY & EMC | Safety Standards | UL60950-1, UL508, TUV EN61558-2-16, IEC60950-1 approved; Design refer to EN50178, TUV EN60950-1 | | | | |
| | Withstand Voltage | I/P-O/P:3KVAC | | | | |
| | Isolation Resistance | I/P-OP:100M Ohms/500Vdc/25°C/70% RH | | | | |
| | EMC Emission | Compliance to EN55032 (CISPR32) (CISPR22) Class B, EN61000-3-2, -3 Class A | | | | |
| OTHERS | EMC Immunity | Compliance to EN61000-4-2,3,4,5,6,8,11, EN55024, EN55035, EN61204-3, light industry level, criteria A | | | | |
| | M.T.B.F. | 1166K hrs min. MIL-HDBK-217F (25°C) | | | | |
| | Packaging | 78Kg; 160pcs/13.5Kg/1.19CUFT | | | | |

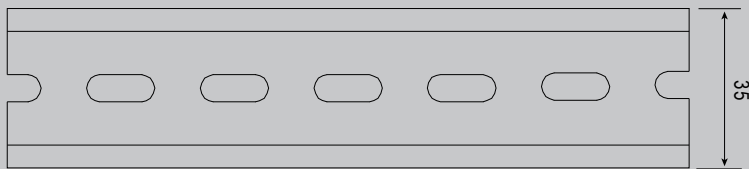
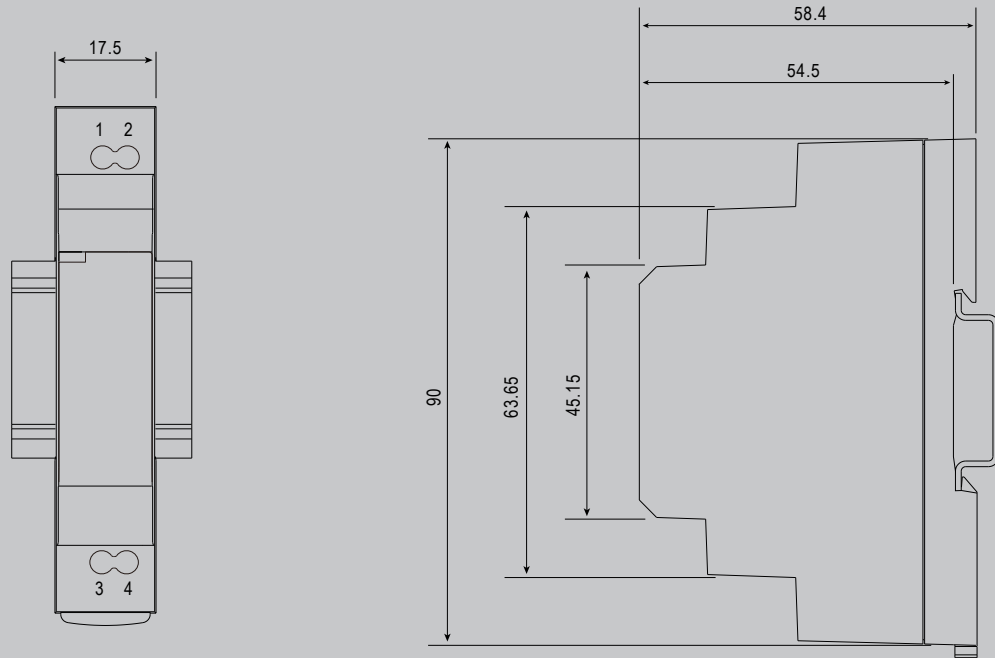
1. All parameters NOT specially mentioned are measured at 230VAC input, rated load and 25°C of ambient temperature.
2. Ripple and noise are measured at 20MHz of bandwidth by using a 12" twisted pair-wire terminated with a 0.1uf & 47uf parallel capacitor.
3. Tolerance: includes set up tolerance, line regulation and load regulation.
4. Constant current limiting operation within 50% ~ 100% rated output voltage; protection type for short circuit is hiccup mode, it will recover automatically after fault condition is removed.
5. The power supply is considered as a component which will be installed with final equipment. The final equipment must re-confirmed that it still meets EMC Directives. For guidance on how to perform these EMC tests, please refer to "EMI testing of component power supplies."

HDR-15 Series

15W Ultra Slim Step DIN Rail Power Supply

Mechanical Diagram

(Unit: mm , tolerance $\pm 0.5\text{mm}$)



ADMISSIBLE DIN-RAIL: TS35/7.5 OR TS35/15

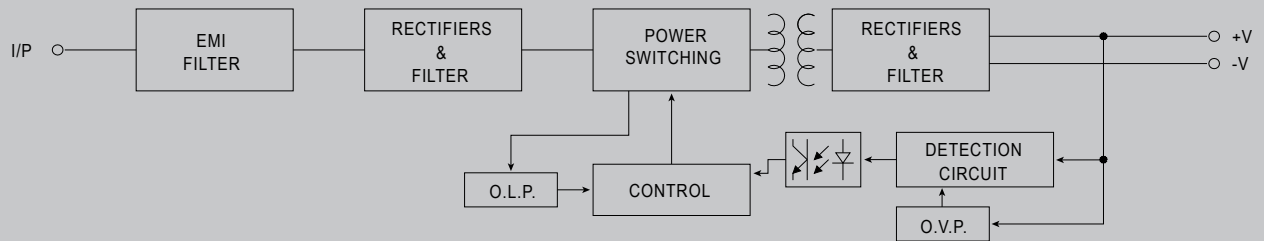
Terminal Pin No. Assignment

| Pin No. | Assignment | Pin No. | Assignment |
|---------|------------|---------|------------|
| 1 | +V | 3 | AC/N |
| 2 | -V | 4 | AC/L |

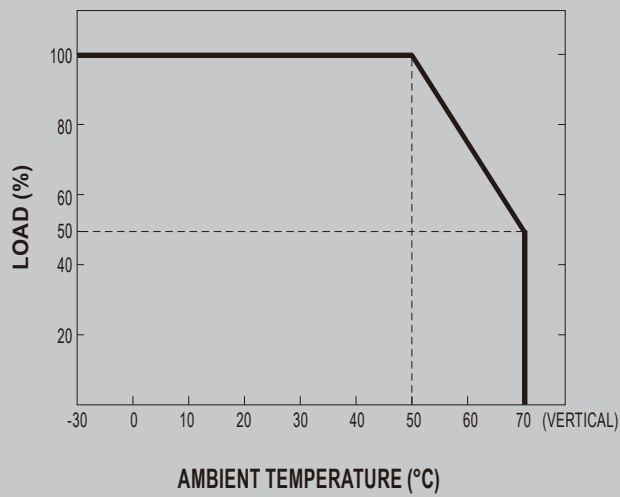
HDR-15 Series

15W Ultra Slim Step DIN Rail Power Supply

Block Diagram



Derating Curve



Static Characteristics

